

INEX  ZAMIR

BHC 809 NC

BYN 577 MP

099A

FIN OCF-26 I

LD 38 177

IRL 99-G-7401

E 4009 BVV

GR IBZ-5331

GB X52 CBT

NL TY-82-BY

A KS 923 AH

W 1946 E

D MD 672

P VB-82-83

TR 41 LH 540

BS-111205

F 346 MBD 75

WTA 600

DVC

INEX ZAMIR

902

DWT-4632

DCM 4396

762-RAM

SG KANSAS EUD 361

190 710

LAR-032

540-ECL

NEBRASKA 15-DK86

135 PGP

WZW 787

9 9 1126

MISSOURI 730 SAJ

ILLINOIS 306 2604

UTAH 070 XHZ

W65 7FJ

WA 6PO-258

QUEENSLAND THE SMART STATE 983-HDG

WESTERN AUSTRALIA BY 68178

ON-324

OE4824

IMA 356

السعودية - خصوصي ٩٦٨١٨٠٢ 9681802

X 48-99

GPD 65P

885-1350

057-0498

1042

DELAWARE 720949



INEX ZAMIR



The ALPR Camera

*What makes it different
from other cameras?*





Some “Must Haves” for good ALPR

- Adequate Illumination
- Must deliver crisp images
- Must operate without needing attention
- Needs to handle the local environment



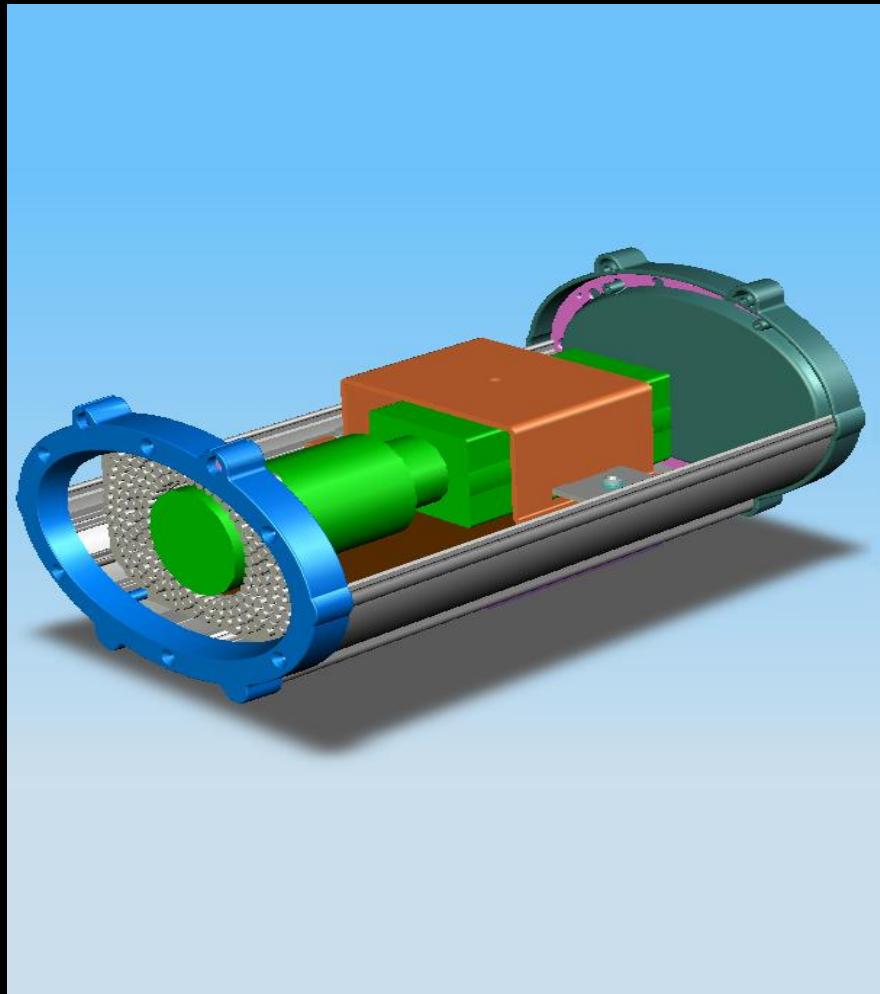


Some “Must Haves” for good ALPR

- Adequate Illumination
- Must deliver crisp images
- Must operate without needing attention
- Needs to handle the local environment

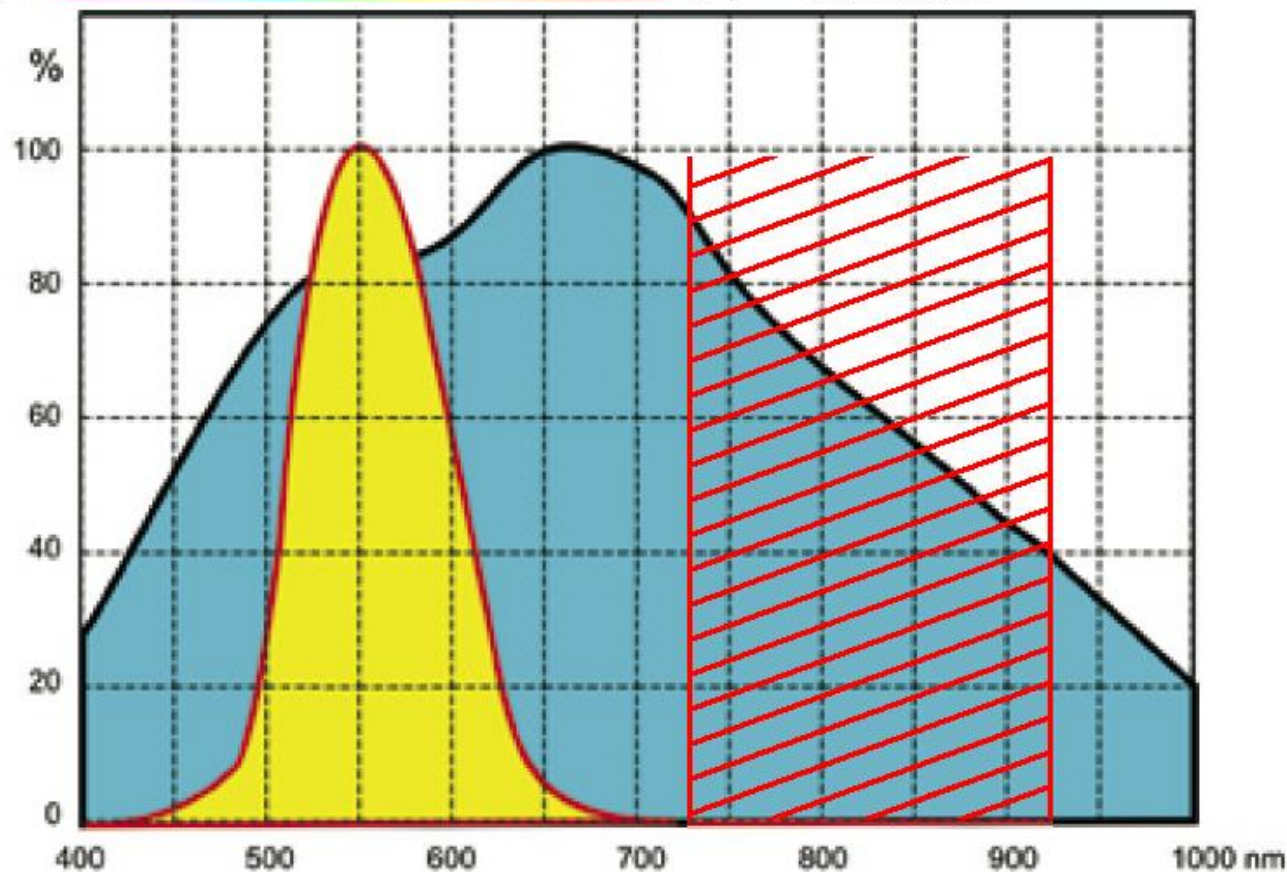









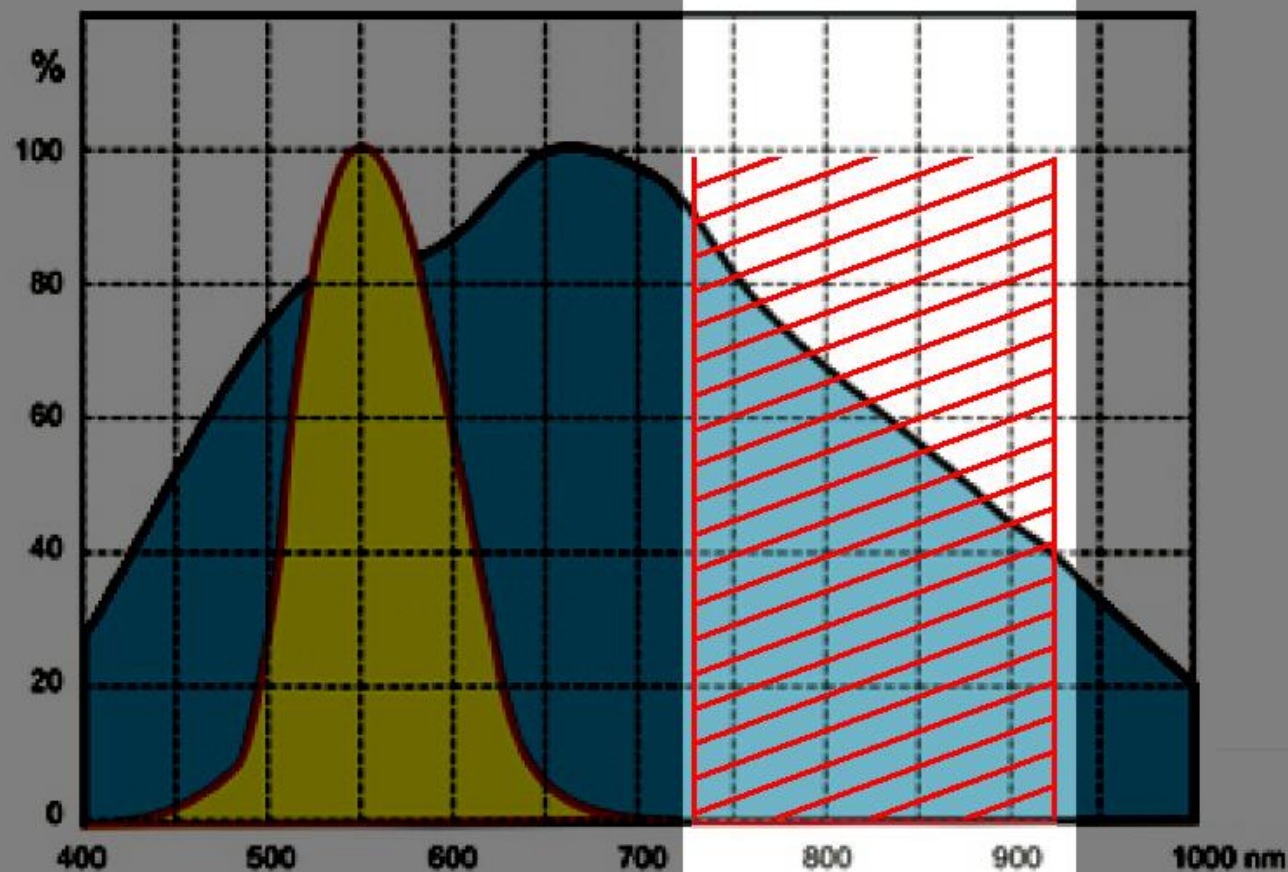


X rays ← UV  IR → Radio waves



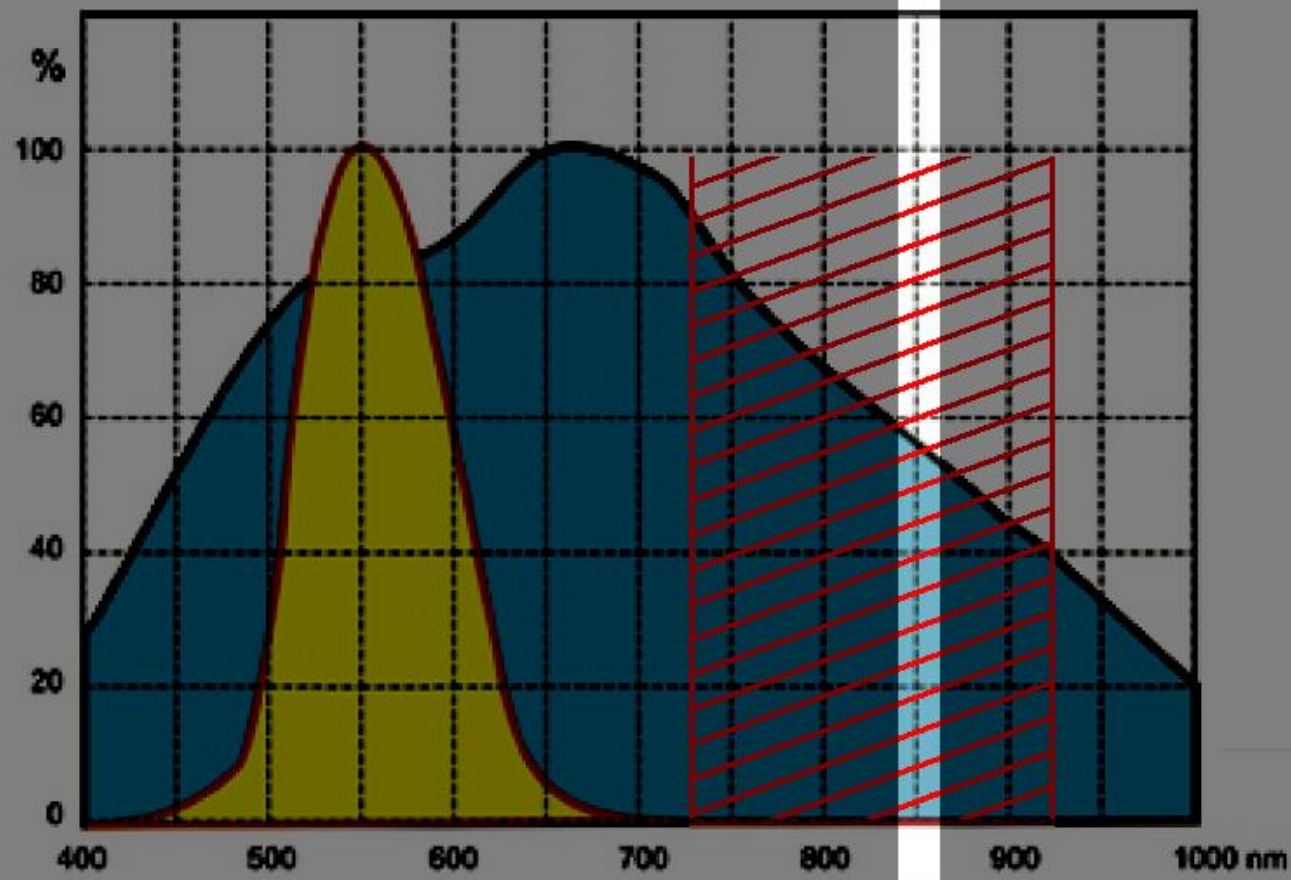
Spectral response of a typical CCTV camera CCD 
White Light Spectrum 
Most common wavelengths for ALPR 

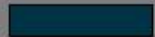

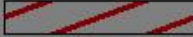




Spectral response of a typical CCTV camera CCD 
White Light Spectrum 
Most common wavelengths for ALPR 





Spectral response of a typical CCTV camera CCD 
White Light Spectrum 
Most common wavelengths for ALPR 





Some “Must Haves” for good ALPR

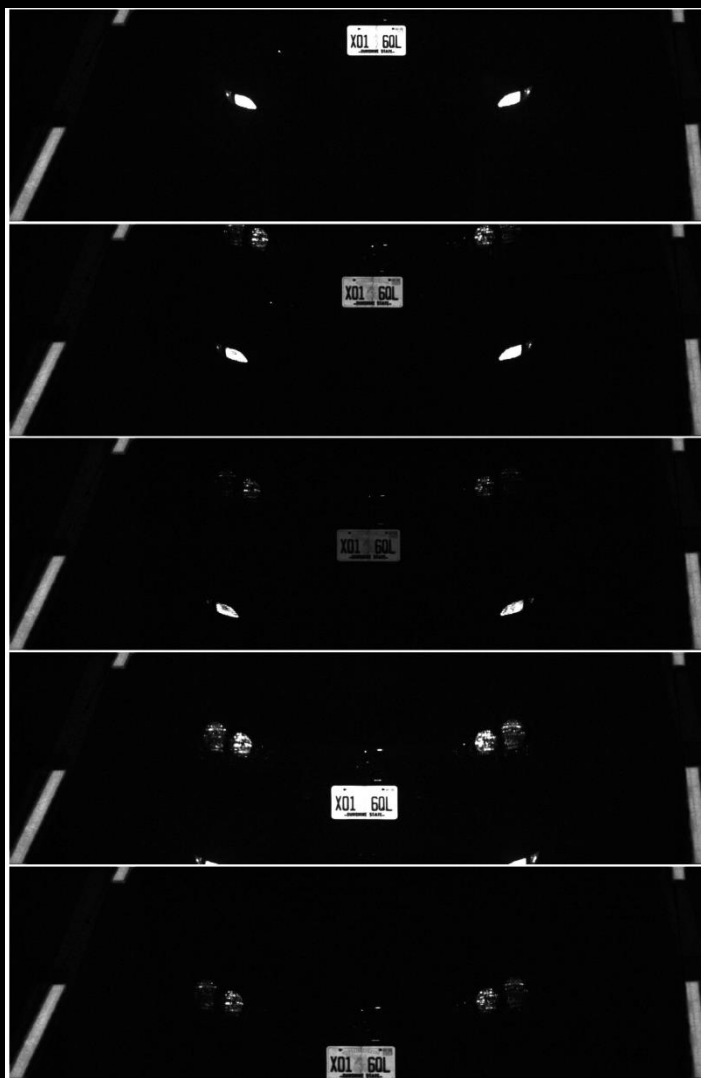
- Adequate Illumination
- Must deliver crisp images
- Must operate without needing attention
- Needs to handle the local environment





Blur free images at highway speeds





← Bright Flash

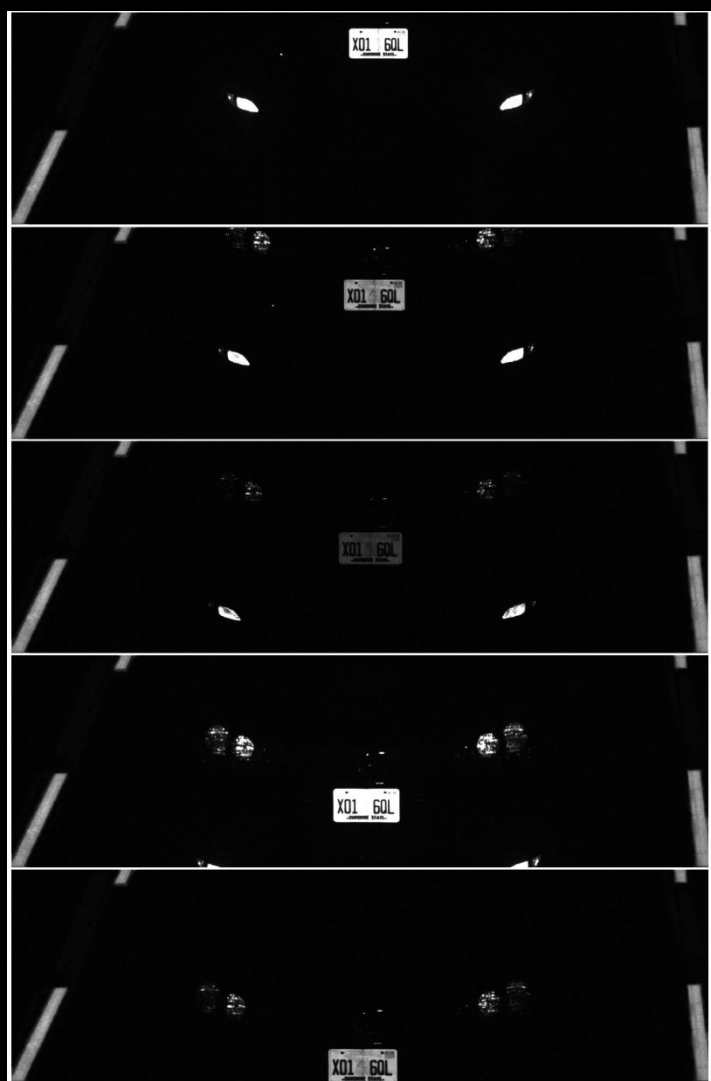
← Medium Flash

← Low Flash

← Bright Flash

← Medium Flash



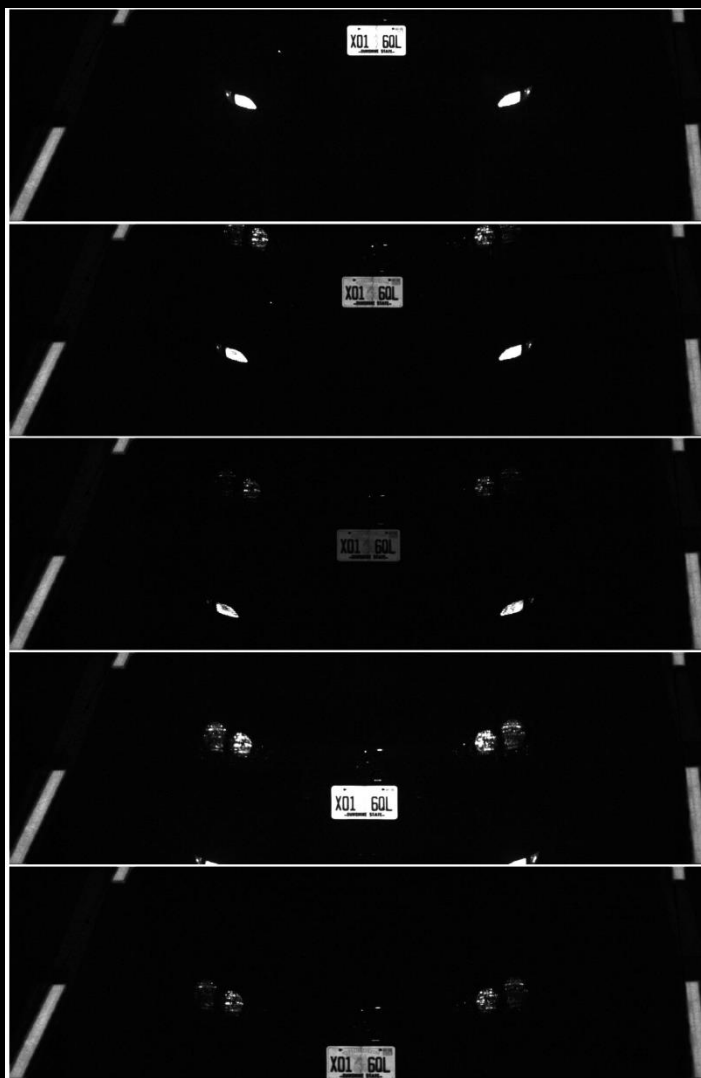




Some “Must Haves” for good ALPR

- Adequate Illumination
- Must deliver crisp images
- Must operate without needing attention
- Needs to handle the local environment





← X01 6QL 96%

← X01 6QL 92%

← XQ1 6OL 78%

← X01 6QL 95%

← X01 6QL 93%





The benefit of using digital ALPR camera/illuminators



IMAGE AREA FOR ANALOG ALPR CAMERA

IMAGE AREA FOR 0.4 mPIXEL ALPR CAMERA

IMAGE AREA FOR 1.2 mPIXEL ALPR CAMERA

IMAGE AREA FOR 2.0 mPIXEL ALPR CAMERA





Some “Must Haves” for good ALPR

- Adequate Illumination
- Must deliver crisp images
- Must operate without needing attention
- Needs to handle the local environment





Some “Must Haves” for good ALPR

- Adequate Illumination
- Must deliver crisp images
- Must operate without needing attention
- Must handle the local environment





INEX ZAMIR