

Selmon Expressway Reversible Express Lanes

WHAT TO DO WHEN YOUR BRIDGE FALLS DOWN



**Martin Stone, Ph.D., AICP - Director of Planning
Tampa Hillsborough Expressway Authority - Tampa, Florida**



Selmon Expressway Reversible Express Lanes

Not

WHAT TO DO WHEN YOUR BRIDGE FALLS DOWN

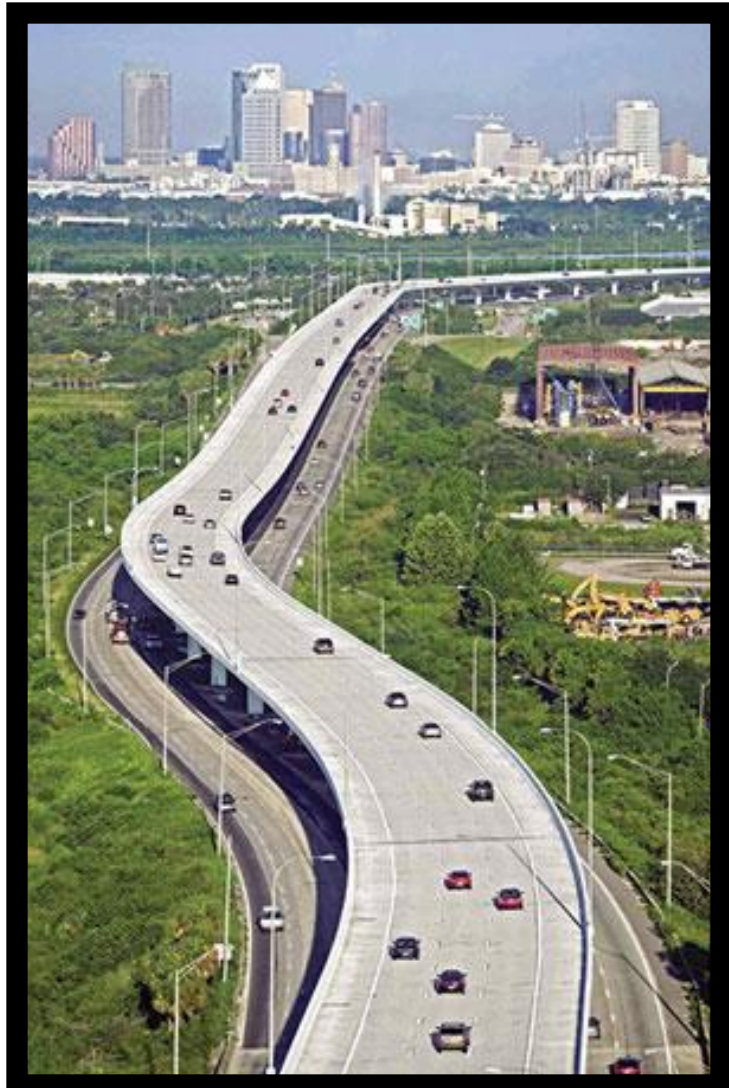


Martin Stone, Ph.D., AICP - Director of Planning
Tampa Hillsborough Expressway Authority - Tampa, Florida



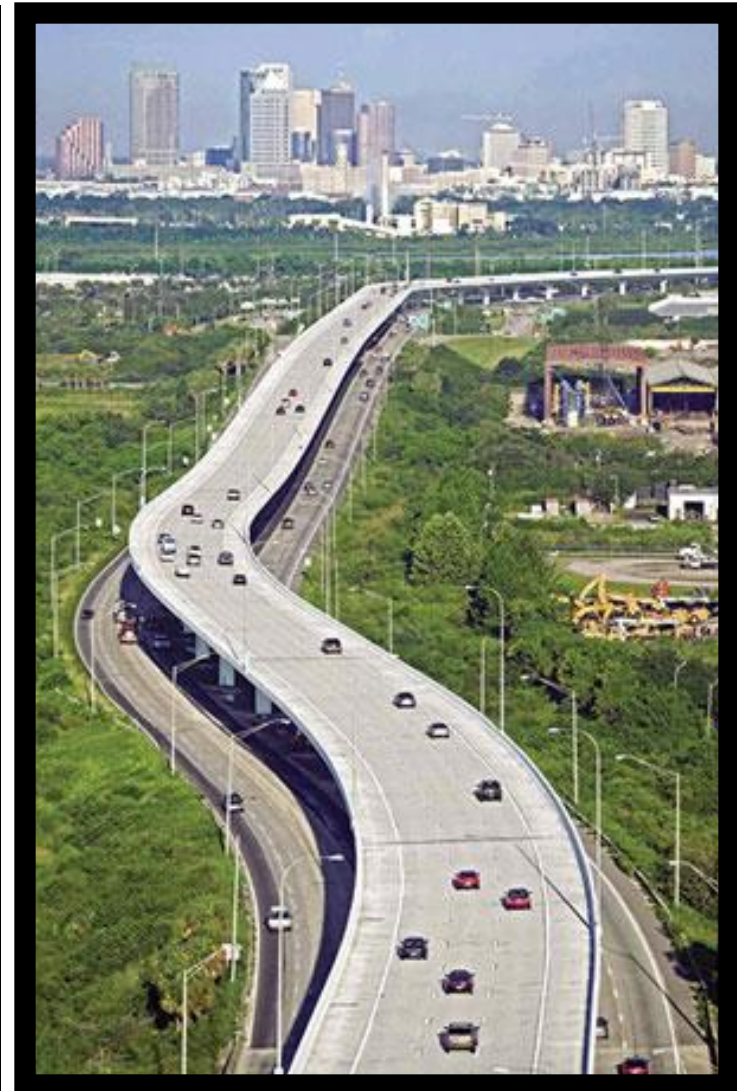
Selmon Expressway Reversible Express Lanes

- 2007 IBTTA Presidents Award
- 22 national, state and local awards for planning, design & construction



Selmon Expressway Reversible Express Lanes

- 2007 IBTTA Presidents Award
- 22 national, state and local awards for planning, design & construction
- One of the world's most innovative transportation projects
- 10-mile long (mostly elevated)
- AET Open Road Tolling
- Extremely safe operation – only three minor accidents in five years for more than 20 million trips



Selmon Expressway Reversible Express Lanes



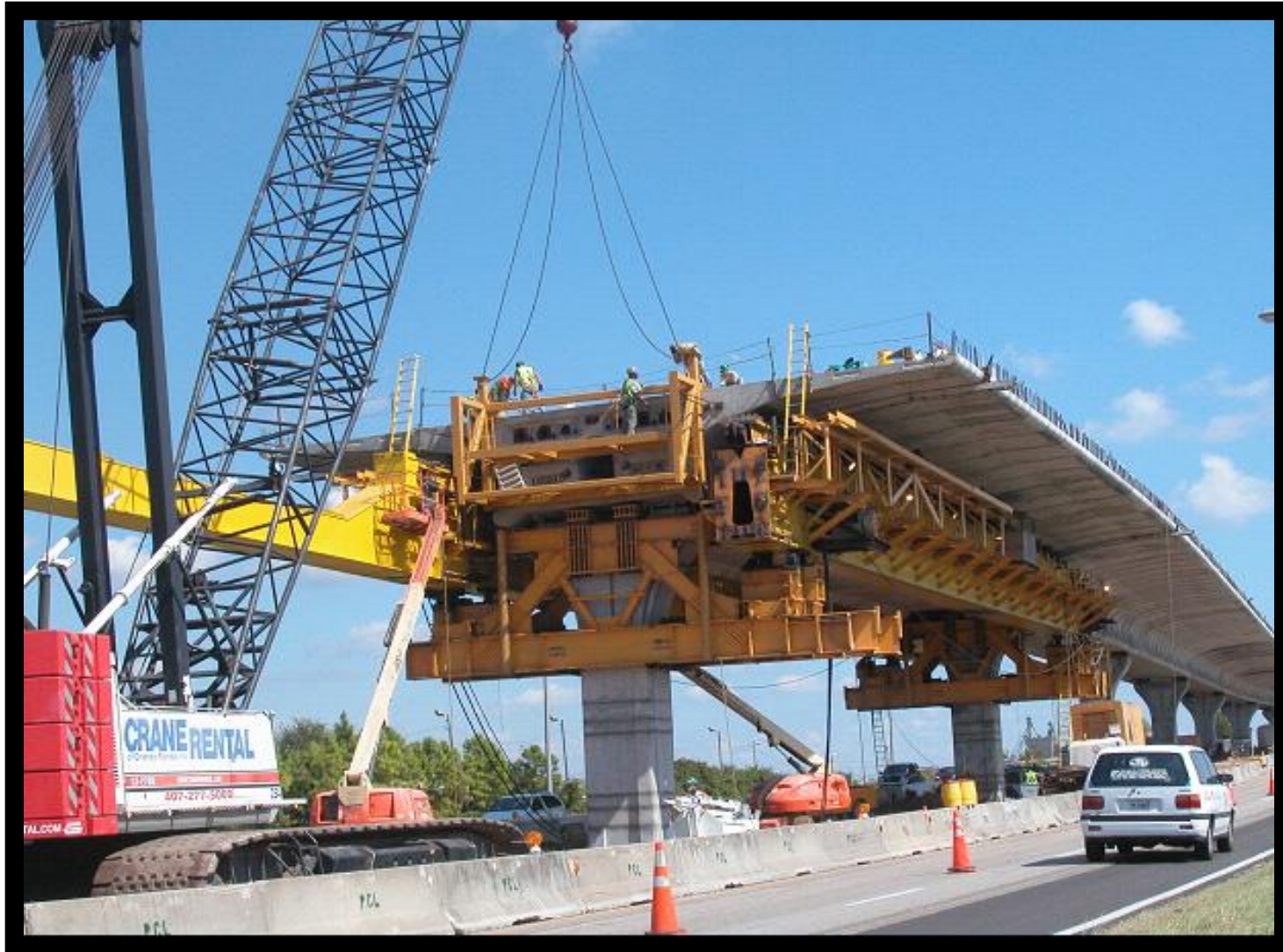
Selmon Expressway Reversible Express Lanes



Selmon Expressway Reversible Express Lanes



Selmon Expressway Reversible Express Lanes



Selmon Expressway Reversible Express Lanes



Selmon Expressway Reversible Express Lanes

April, 2004



Selmon Expressway Reversible Express Lanes

April, 2004

**Pier #97 dropped 11 feet
under a fully loaded truss**



Selmon Expressway Reversible Express Lanes

April, 2004

REPUTATION & CREDIBILITY?

#97 dropped 11 feet
under a fully loaded truss



Selmon Expressway Reversible Express Lanes



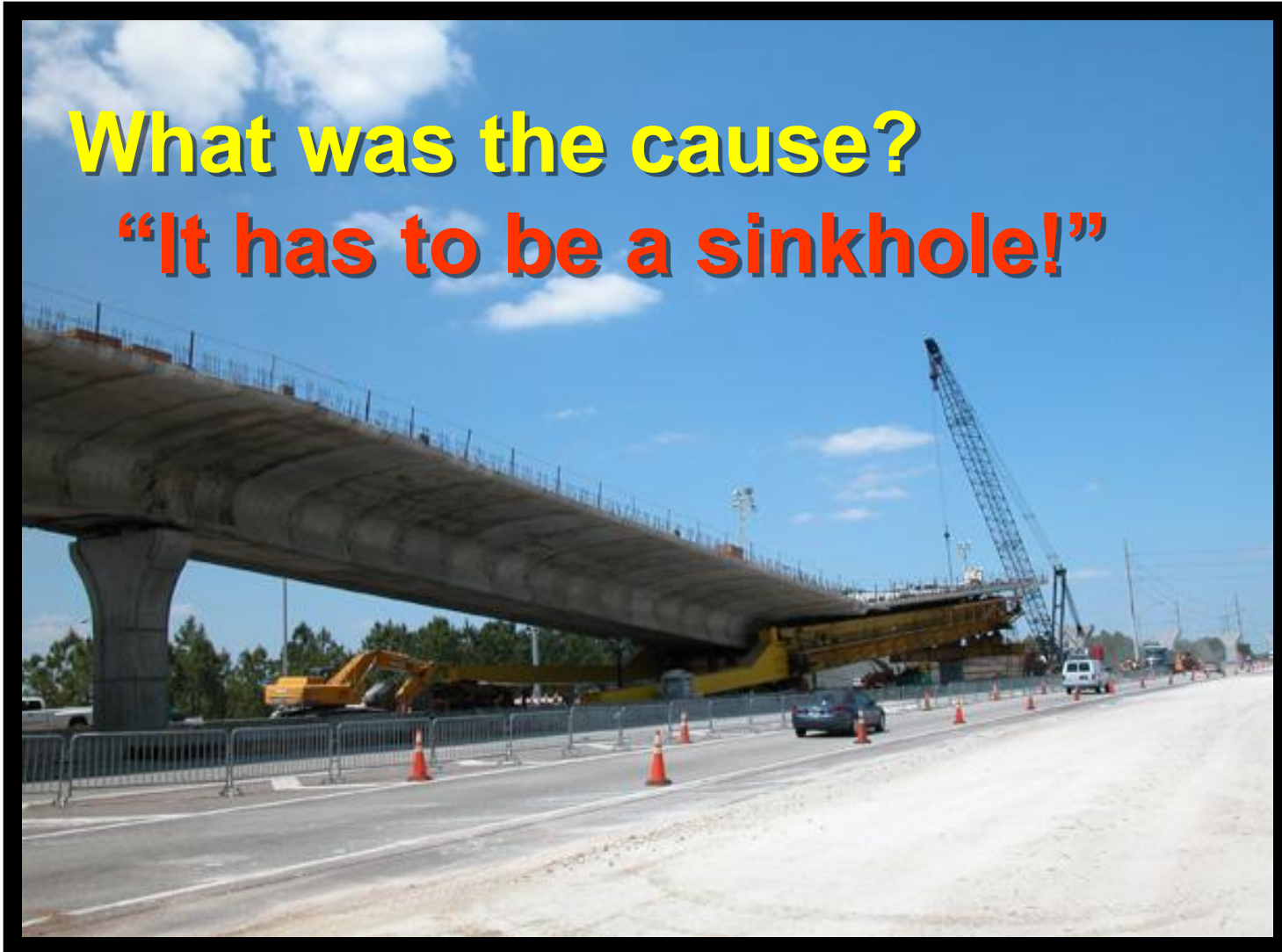
Selmon Expressway Reversible Express Lanes

What was the cause?



Selmon Expressway Reversible Express Lanes

What was the cause?
“It has to be a sinkhole!”

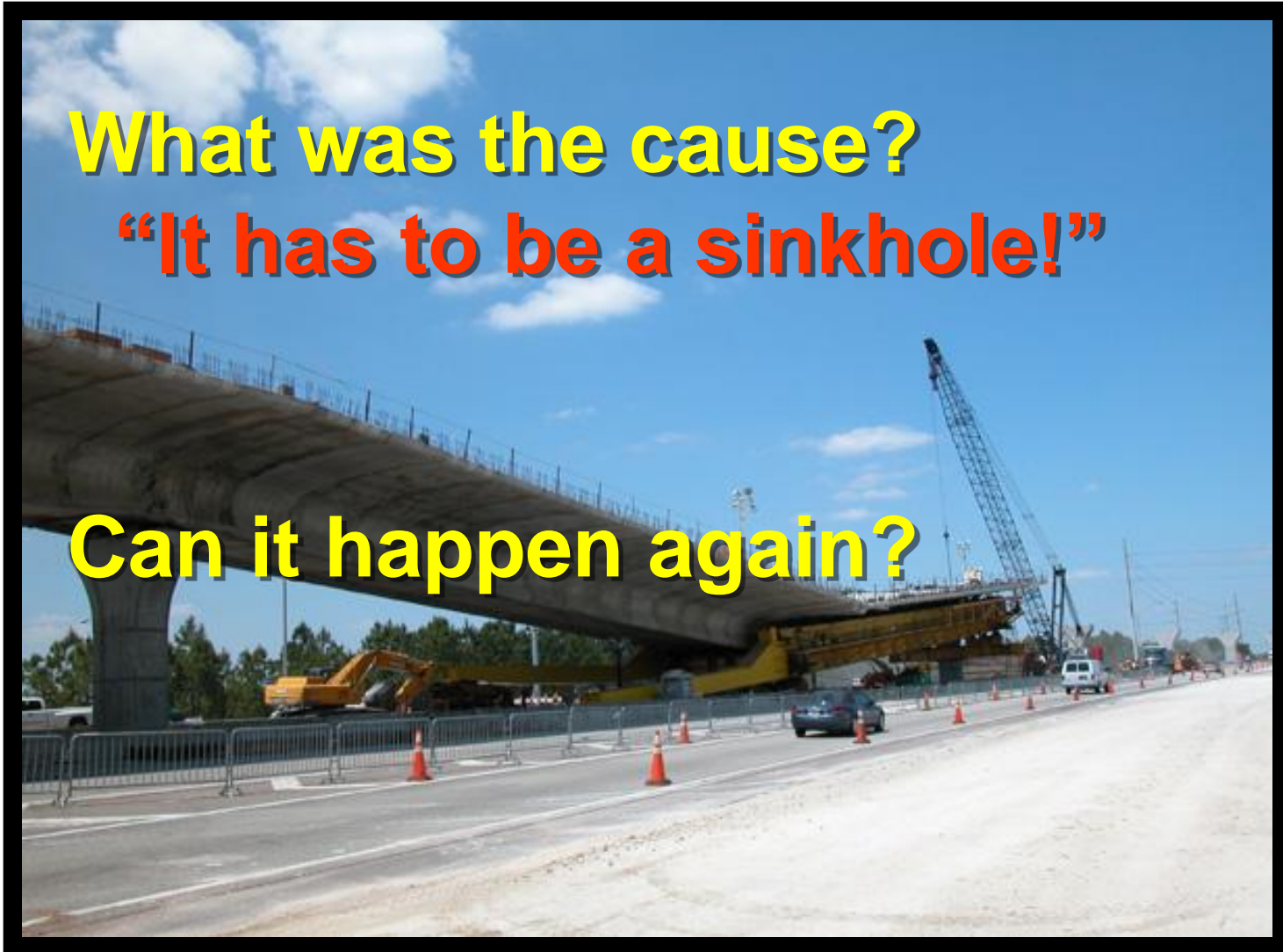


Selmon Expressway Reversible Express Lanes

What was the cause?

“It has to be a sinkhole!”

Can it happen again?



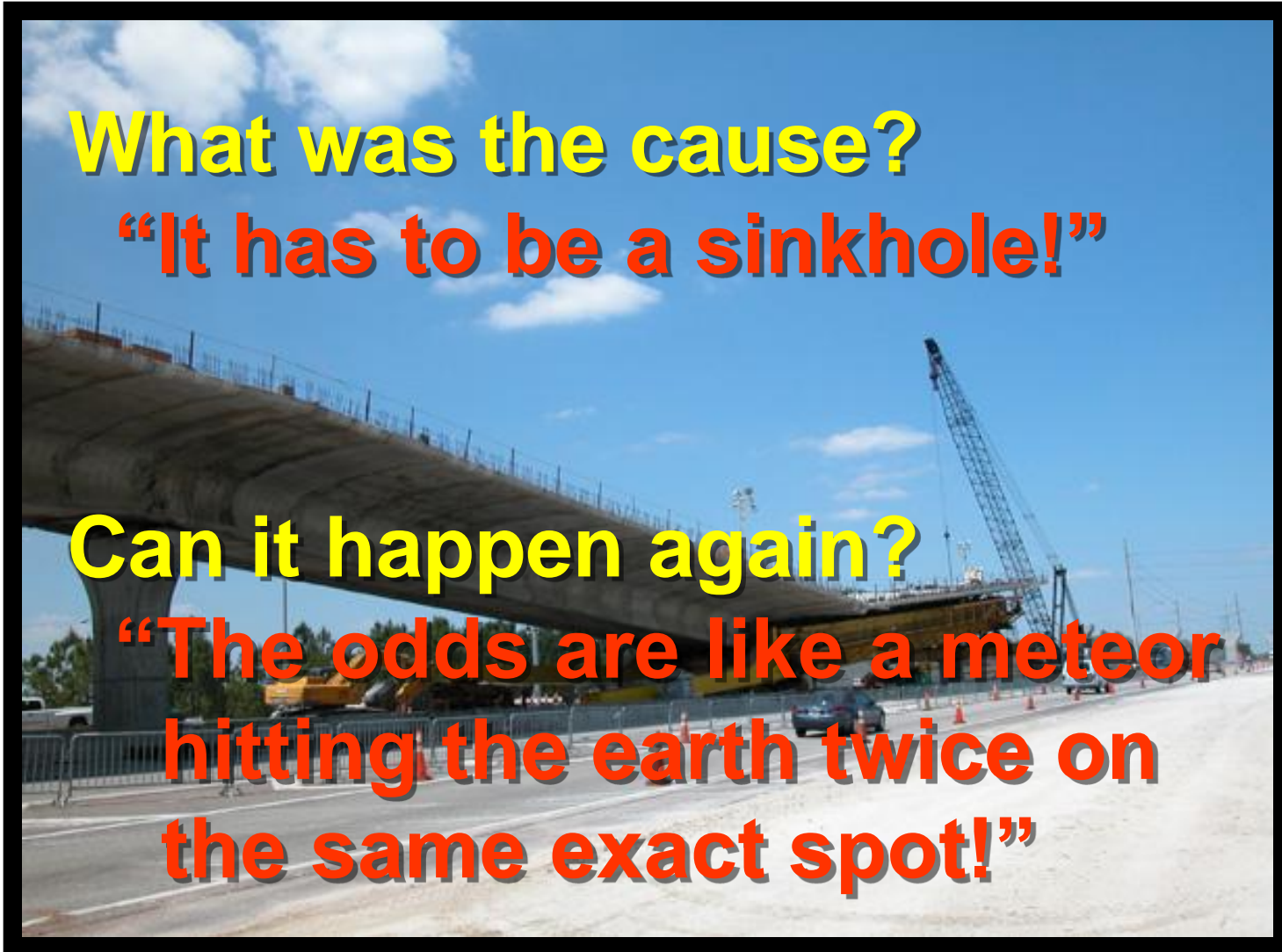
Selmon Expressway Reversible Express Lanes

What was the cause?

“It has to be a sinkhole!”

Can it happen again?

“The odds are like a meteor hitting the earth twice on the same exact spot!”



Selmon Expressway Reversible Express Lanes



Selmon Expressway Reversible Express Lanes



Selmon Expressway Reversible Express Lanes

April, 2006



THE LESSON

How to Not Lose Your Credibility

THE LESSON

How to Not Lose Your Credibility

- Never guess
- Never hypothesize or suggest possibilities
- Never MAKE IT UP
- Never say anything that you absolutely do not know for SURE

THE LESSON

How to Not Lose Your Credibility

- Never guess
- Never hypothesize or suggest possibilities
- Never MAKE IT UP
- Never say anything that you absolutely do not know for SURE
- If you don't know -- say you don't know -- and you will tell them when you do know

THE LESSON

How to Not Lose Your Credibility

- **Never guess**
- **Never hypothesize or suggest possibilities**
- **Never MAKE IT UP**
- **Never say anything that you absolutely do not know for SURE**
- **If you don't know -- say you don't know -- and you will tell them when you do know**
- **And follow up - tell them when you know how and why it happened - how you're going to fix it - and make sure it won't happen again**