

New Jersey Turnpike Authority

Talking Through Superstorm Sandy

Henry (Chip) Eibel Jr.
Acting Director of Operations

Our Roadways – Fast Facts

New Jersey Turnpike

- Approximately 148 miles
- Actively Managed Roadway
- ADT of 679,000
- 13% Commercial Vehicles
- 70,000 Motorist aids on an average
- 70 Heavy Duty accidents per year

Garden State Parkway

- Approximately 173 miles
- 1.2 Million vehicles per day
- No trucks north of MP 105
- Limited access tolled roadway
- 50,000 Motorist aids on average
- The Parkway has been ranked as one of the busiest toll highways in the country based on the number of toll transactions.

Statewide Traffic Management Center



NJ Turnpike / GSP – ITS Equipment

- ✓ Traffic Detection consists of Inrix & Sensys Pucks
- ✓ 144 Emergency Speed Limit / Warning signs
- ✓ 115 Changeable Message Signs
- ✓ 120 Variable Message Signs
- ✓ 250 Traffic Cameras
- ✓ NJ511

Emergency Speed Warning & Speed Limit Signs



Traffic Conditions

2.5 mile spacing



Pre-Sandy Communications

Plan and develop messaging for

- Roadway Impacts
 - High Winds
 - Surge / Tidal Flooding
 - Heavy Rain / Localized Flooding
- Evacuation Impacts
 - Evacuation orders / routing
 - State of Emergency
- Regional Impacts (TRANSCOM)

Pre-Sandy Messaging

**STATE OF EMERGENCY
DUE TO
APPROACHING STORM**

**STATE OF EMERGENCY
IN EFFECT**

**NO TOLLS
PROCEED SLOWLY**

As Sandy approached...

**NEW JERSEY UNDER
STATE OF EMERGENCY
CALL 511**

**ROADWAYS – BRIDGES
SUBJECT TO CLOSURE
AT ANY TIME**



During Sandy

- Put the plan into play
 - State of Emergency
 - Patron Safety
 - Areas prone to tidal flooding (Proactive closures)
 - Areas anticipated to flood (Reactive closures)
 - Regional Conditions

As the facilities were impacted...

**PARKWAY CLOSED
AT EXIT 38**

**PARKWAY CLOSED
AT EXIT 123**

**PARKWAY CLOSED AHEAD
USE ALTERNATE ROUTE**

**GEORGE WASHINGTON
BRIDGE CLOSED**

**HOLLAND TUNNEL
CLOSED**

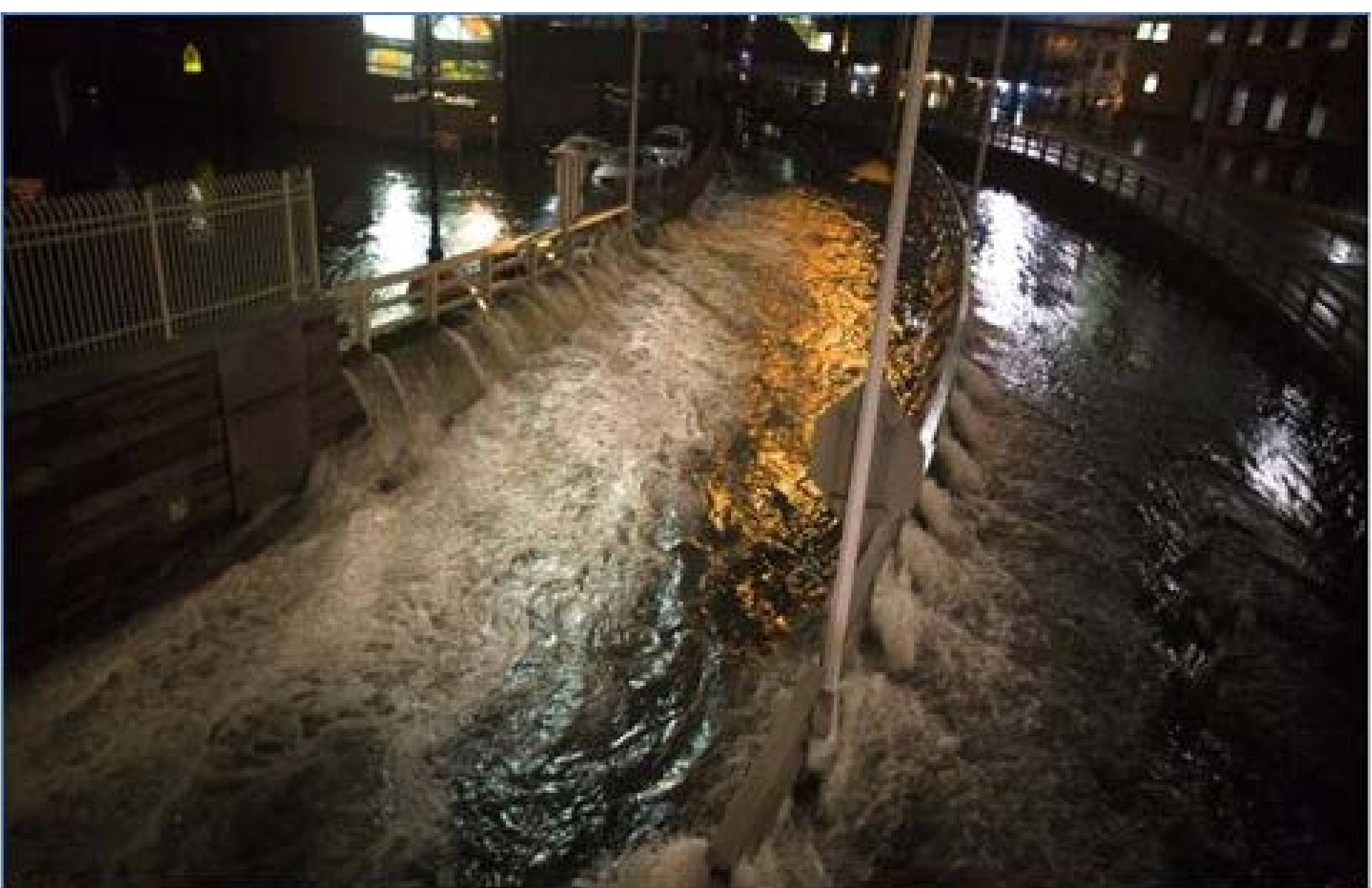
**ALL NEW YORK
CROSSINGS CLOSED**



Lower Manhattan



MTA NYC Transit Subway 86th Street Station



MTA B&T Hugh L. Carey Tunnel ¹



Post Sandy

- **Challenges in the face of Regional Devastation**
 - Restoring the roadways
 - Power
 - Clean up
 - Repair
 - Restoring Regional Mobility
 - Fueling Stations
 - Roadway Network (NYC - HOV 3)
 - Rail

What a night!



Debris....



...Even rail totes



No Power? No Fuel?

**FUEL RESTRICTION
EVEN ENDING PLATES
TODAY ONLY**

**FUEL RESTRICTION
ODD ENDING PLATES
TODAY ONLY**

Restoring Regional Mobility

**FREE SHUTTLE TO MIDTOWN
GSP EXIT 131A – METROPARK
6AM – 10AM**

 **HOV 3+ IN EFFECT
AT LINCOLN TUNNEL**

**LIMITED SEAPORT ACCESS
TUNE TO 1610 AM**

Lessons Learned

- Extended Power loss
- Back up power for Electronic signs
- Design Traffic Management systems for a Category 2 storm surge

