



Physical Security Information Management

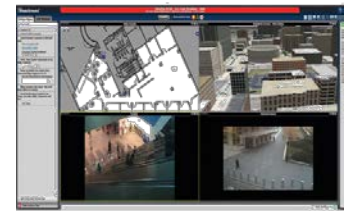


VidSys Physical Security Complexity & Challenges

- Proprietary Technologies
- Multiple Disparate Systems
- Numerous Events / Alarms
- Lack of Real Time Management



LIVE VIDEO FEEDS



RECORDED VIDEO



WebEOC®

911 / C.A.D. / EOC



ACCESS CONTROL



SENSORS & ALARMS



LPR / TRACKING DEVICES



GIS / GPS / AVL



SOCIAL MEDIA / ANALYTICS



C2 / Situational Awareness



REOURCES / EVIDENCE

COMMON OPERATIONAL PICTURE THAT:

- **Integrates** *all disparate safety, security, transportation devices and operational data into one common view*
- **Applies intelligence** *to identify situations, and*
- **Presents step-by-step instructions** *for situation management, tracking and resolution that are effective, compliant, and timely.*
- **Web-based** *for remote and scalable accessibility*

RiskShield™

0 Parked 3 Pending 4 Assigned

Map View | List View

New | Assign | View | Complete

Timeframe: -24h | now | Go

View: All Open

User Groups

Search: | Go | Reset

Severity	ID	Created	Flags	Status	Type	Location	Description	Owner
Medium	402	14:35:03		Pending	Perimeter Intrusion			*Unassigned*
High	397	04/08 09:04:43		Assigned	Bomb Threat	MA State House	Bomb Threat call in to 911	Police1
High	396	04/08 09:04:26		Pending	Gunshot Detected	E St. & Bolton Sou...	Shotspotter Gunshot Detected	*Unassigned*
High	392	03/21 13:12:28		Assigned	Traffic Accident	Broadway I-90	Traffic Accident	CAD Dispatch
Low	391	03/21 13:12:20		Pending	Foreign Object on Trac...	Downtown Crossin...	No Object on Tracks	*Unassigned*
High	390	03/21 12:59:52		Assigned	Gas Leak	One Boston Basem...	Gas Leak detected	Fire Dent2

7 Situations
Drag new situation to map:
Page 1 of 1
 Split View
 Detach Map
Page Size: 20

Directory of Cameras and Devices

- North America
 - Boston Maps
 - NY Medical Center
 - Boston Devices
 - Boston Cameras
 - Tours
 - City Hall
 - One Boston Plaza
 - MBTA
 - South Boston
 - Downtown
 - Traffic
 - Logan Airport
 - Media
 - Responders
- Vidsys Vienna Office
- Asia
- Middle East
- South America
- Europe

Map Integration / Geospatial Device Placement

Universal Viewers for Web Content, RSS, Cable/Satellite, Documents, etc.

- CNN
- Satellite - Live
- ASX Live

Video Wall Integration

Embedded Camera & NVR Controls

Simultaneous Viewing of Live and Recorded Video

Situational Awareness Map with Vessel Tracking Integration

Directory

- North America
 - Boston Maps
 - One Boston Place
 - MSTA
 - City Hall
 - Logan Airport
 - City Region
 - Boston View
 - Boston Downtown View
 - NY Medical Center
 - Boston Devices
 - Boston Cameras
 - Media
 - Responders
- Asia
- Middle East
 - Abu Dhabi Maps
 - Emirates Palace
 - Emirates Palace
 - Emirates Palace - Left Wing
 - Emirates Palace - Right Wing
 - Abu Dhabi View
 - Abu Dhabi Cameras
 - Abu Dhabi Devices
 - Abu Dhabi Media
 - Responders
- South America

Search: **Find**

Salvo

Name: **Save**

Salvo Name	
Boston - Downtown - 1x1	
Boston - Downtown - 1x8	X
Boston - Downtown Cross - 1x3	X
Boston - Logan - 1x8	X
Boston - Logan - 2x4	X
Boston - Map Quadrants - 2x2	X
Boston - One Boston Plc - 1x5	Y

Launch Microsoft Windows Explorer

Integrated Device Controls

Name: EMP Palace Access 05
Type: Access Control (Access)

Lock:
 Unlock:
 Open:
 Disable:

Situational Awareness Floor Plan / CAD Integration

Admin UI

Virtual Tracker

One Boston Place - Ground Floor

Live Tracking of Responders and Mobile Users

Operator Created Layouts

Satellite - Live

Infrared Satellite 8:00 PM IST

EMP N.Harbor 01

EMP N.Harbor 02

- 1. Two VMS Systems**
- 2. Access Control**
- 3. Stopped Vehicle Detection**
- 4. Alarm Panels**
- 5. Video Wall Management**
- 6. Perimeter Detection**
- 7. Radar/Vessel Tracking**
- 8. State Agency Camera Feeds**
- 9. Long Range Thermal Cameras**

- **Reduces operational costs**
- **Eliminates expense from operational failures**
- **Enables consistent operating procedures**
- **Minimizes risk**
- **Minimizes property loss**
- **Enhances situation awareness**





Situation #2053 - Stopped Vessel Detected [Pending] - Medium
 Description: Track 1960[GRANDE GUINEA] - EXITED zone 'FSK Area Test Zone', Heading: 168, Speed: 7.99 - Location: FSK Area Test Zone

Action Plans **Edit Situation**

Stopped Vessel

Can confirmation be made with video?
 Yes/No?
 --select one --

*Disposition?
 Please Select:
 --select one --

Incident Closed
 Yes/No?
 --select one --

← ||| ▶

▶ Add Additional Action Plan

← Hide Action Plan

Drag event to map:

Stopped Vessel

Map data ©2013 Google - Terms of Use

Milestone XProtect 6.5.SC-6 FLIR Color

Az: 225.6
EI: -0.2

Milestone XProtect 6.5.SC-1 FLIR Color

Az: 40.9

Milestone XProtect 6.5.SC-1 FLIR IR

Az: 40.9

Hide Situation Log

Time	Type	Source	Description
17:39:40	EVENT	Track 1960[GRANDE GUINEA]	- MOVED. Heading: 155, Speed: 7.66
17:38:59	EVENT	Track 1960[GRANDE GUINEA]	- MOVED. Heading: 157, Speed: 7.74
17:38:17	EVENT	Track 1960[GRANDE GUINEA]	- MOVED. Heading: 160, Speed: 7.83
17:37:23	EVENT	Track 1960[GRANDE GUINEA]	- EXITED zone 'FSK Area Test Zone'. Heading: 168, Speed: 7.99
17:36:57	EVENT	Track 1960[GRANDE GUINEA]	- MOVED. Heading: 168, Speed: 7.99

Type a note to add to the situation log. Add Log Size: 25 Audit:

Situation Source Directory

- Cameras
 - Milestone XProtect 6.5.SC-1 FLIR Color
 - Milestone XProtect 6.5.SC-1 FLIR IR
 - Milestone XProtect 6.5.SC-6 FLIR Color [2]
 - Milestone XProtect 6.5.SC-6 FLIR IR
- Map Viewers
 - Stopped Vessel [1]
- Devices
- Attachments
 - Upload Attachment

Global Source Directory

Hide Source Directories