



The Louisville-Southern Indiana Ohio River Bridges Project

David L. Talley

Innovative Finance Manager

Kentucky Transportation Cabinet



PRESENTATION STRUCTURE

- Project Overview
- Unique Characteristics
- All-Electronic Tolling
- Overcoming Challenges



PROJECT OVERVIEW

-DOWNTOWN CROSSING

Rehab current I-65 Bridge

New cable stay bridge

Improve "Spaghetti Junction"

-EAST END CROSSING

New cable stay bridge

Completes the loop





PROJECT OVERVIEW

-DOWNTOWN CROSSING

Rehab current I-65 Bridge

New cable stay bridge

Improve "Spaghetti Junction"



-EAST END CROSSING

New cable stay bridge

Completes the loop





PROJECT OVERVIEW

- Total cost approximately \$2.6 billion
- Split almost evenly between crossings
- Construction began in 2013
- Anticipated completion December 2016

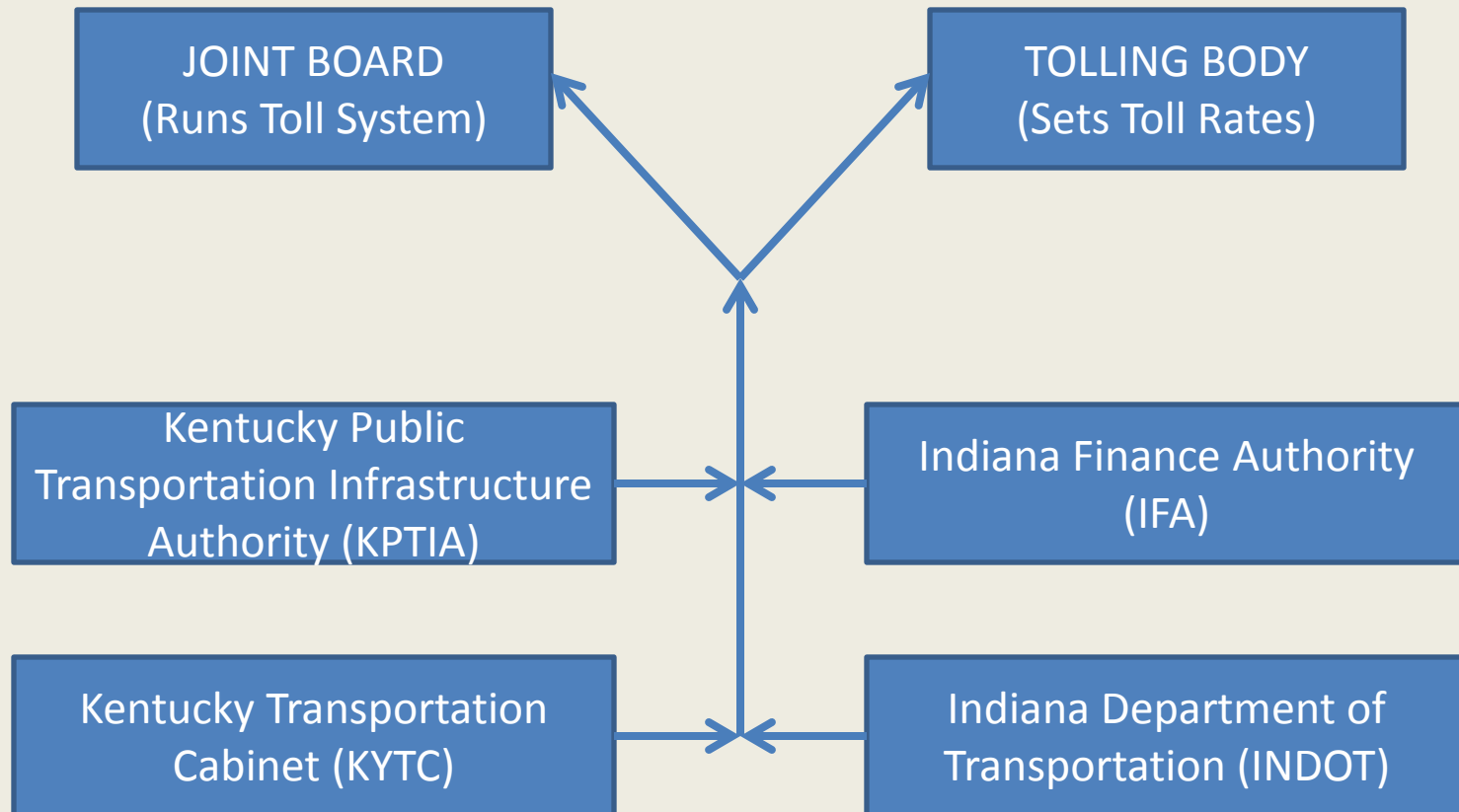


UNIQUE CHARACTERISTICS

- Bifurcated procurement
- Different delivery models and funding structures
- Uniform tolling and equal division of revenues
- Bi-State governance structure



UNIQUE CHARACTERISTICS





ALL ELECTRONIC TOLLING

- Toll all three bridges on both crossings
- Static rates
- Transponder, pre-registered video, license plate
- Both E-ZPass and local 6C transponders



ALL ELECTRONIC TOLLING

Tolling Body set initial rates September 11, 2013
Increase annually without further action!!

ACCOUNT TYPE	2-AXLE	MEDIUM TRUCK	HEAVY TRUCK
FREQUENT USER DISCOUNT	\$1.00	N/A	N/A
TRANSPONDER (PREPAID)	\$2.00	\$5.00	\$10.00
PRE-REGISTERED VIDEO (PREPAID)	\$3.00	\$6.00	\$11.00
NON-REGISTERED VIDEO (POSTPAY)	\$4.00	\$7.00	\$12.00



OVERCOMING CHALLENGES

- No tolls in the area for 50 years
- No history of AET in KY or southern IN
- States don't have expertise, have to adapt
- Fair and effective enforcement across states



OVERCOMING CHALLENGES

- Have been to NC, FL, CA, CO, TX, NJ, Vancouver
- Marketing firm expected August 2014
- Toll service provider expected November 2014
- “Buy versus build” for toll readiness in 2016



QUESTIONS

???