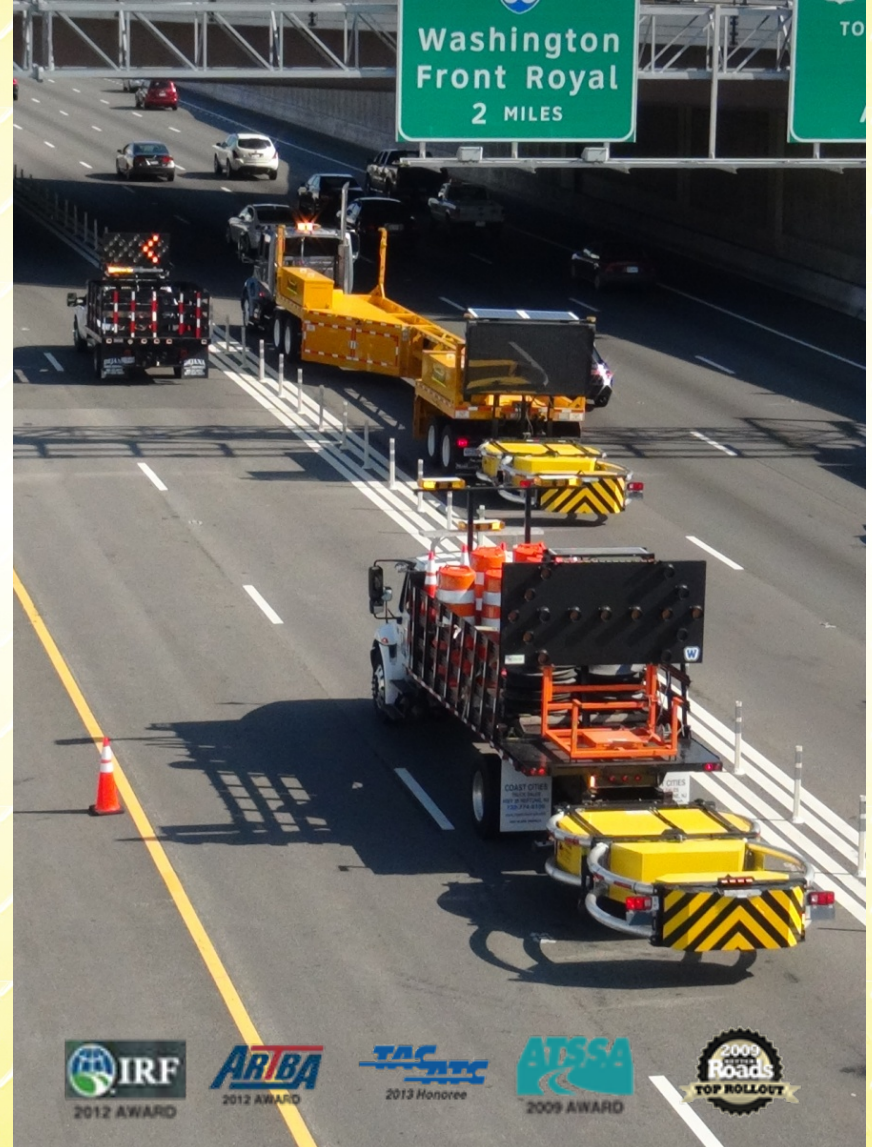


Highly Mobile Protection

Mobile Barriers MBT-1®

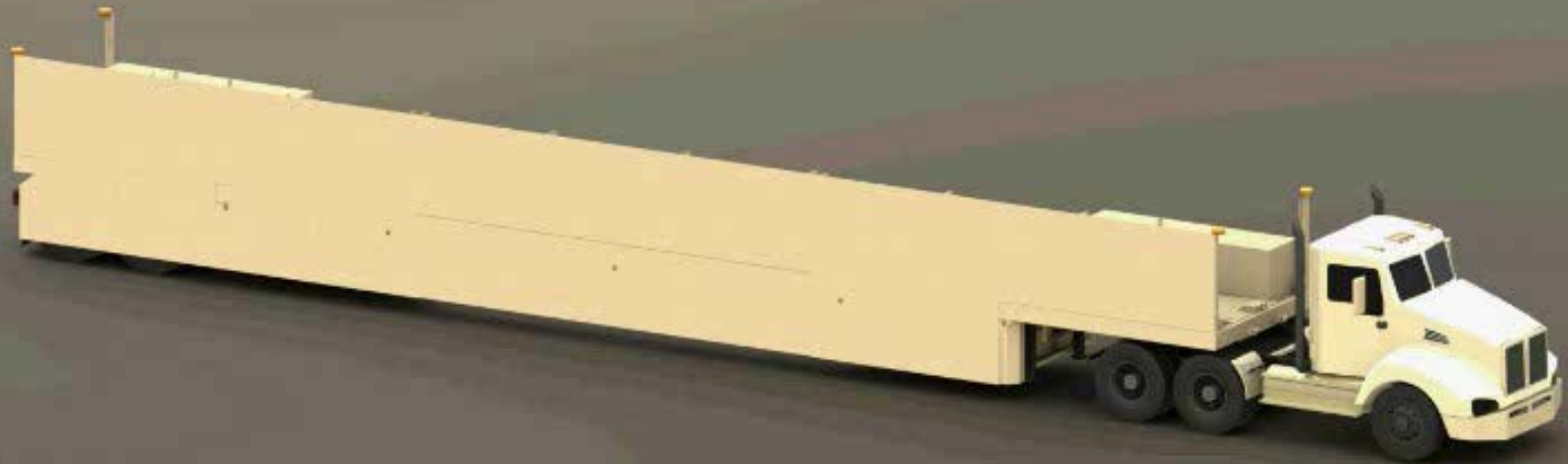
“Improving Safety, Efficiency & Traffic Flows”



Introduction

NBC News, Dallas Texas ... 2010





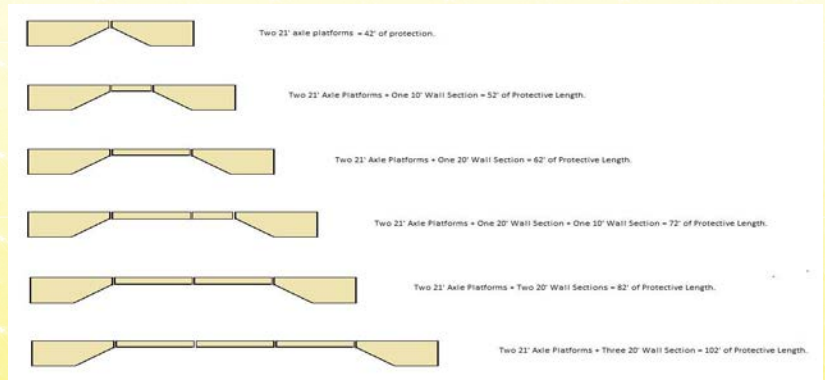
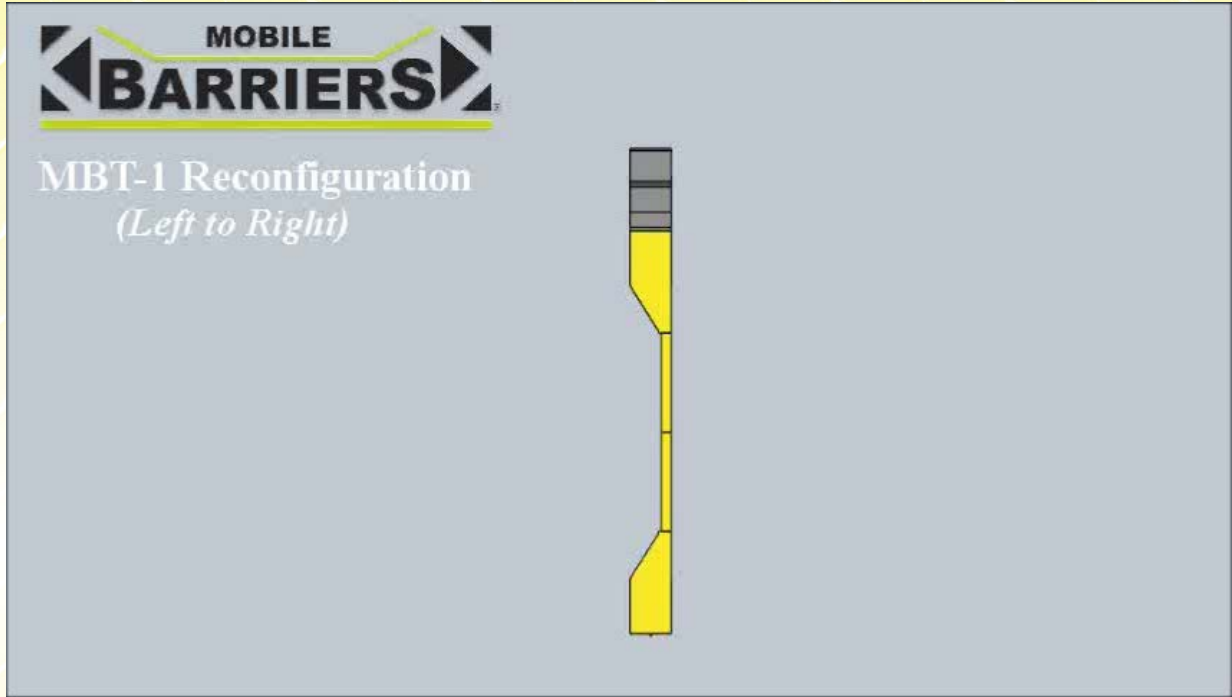
Left - Right

Tractor Attaches to Either End

Length

42-102'

(Normal Width, Weight & Height)



Drives Like a Semi

Park & Work



Features:



Power

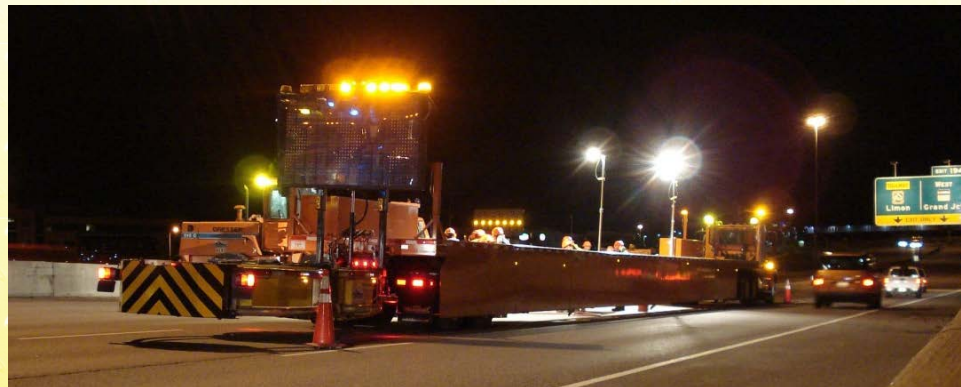
12/24v, 120/240v & Solar

Lights

Safety & Work

Storage

Internal & Decks



Features:



Signage
w/ Radar



Rear Steer
(optional)

TMA





For Workers:

- Safer
- More Efficient

*“doing in 1 night
what otherwise took 3-5”*



For The Public:

- Less Disruption
- Less Delay

“There’s no better way to reduce work zone accidents and improve work conditions for everyone than to safely complete the work as quickly as possible and reopen the roadway to normal traffic flow”

TxDOT Deputy Executive Director





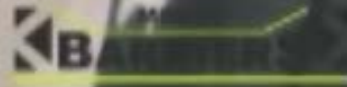
Better

- Complete Package
- Highly Mobile
- Less Collateral Equipment
- Reduce Number & Duration of Lane Closures

MBT-1 In Use

“Improving Safety, Efficiency & Traffic Flows”

NTTA
NORTH TEXAS TOLLWAY AUTHORITY



New Crane & Bucket

Removable Option for New and Existing Barriers





Mobile Barriers MBT-1®

“Improving Safety, Efficiency & Traffic Flows”



Mobile Barriers LLC | Denver Offices: 24918 Genesee Trail Road | Golden, Colorado USA 80401 | Phone 1.303.526.5995

www.mobilebarriers.com
info@mobilebarriers.com