

PARSONS



Atlanta

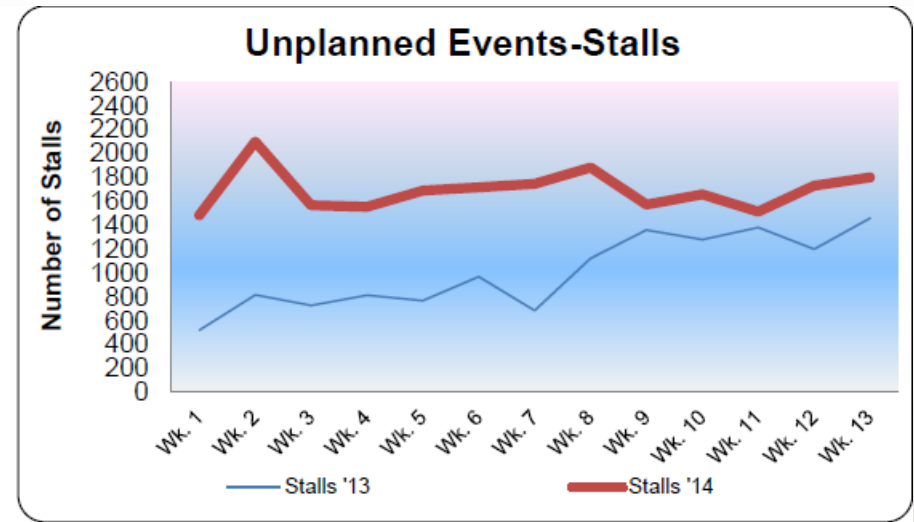
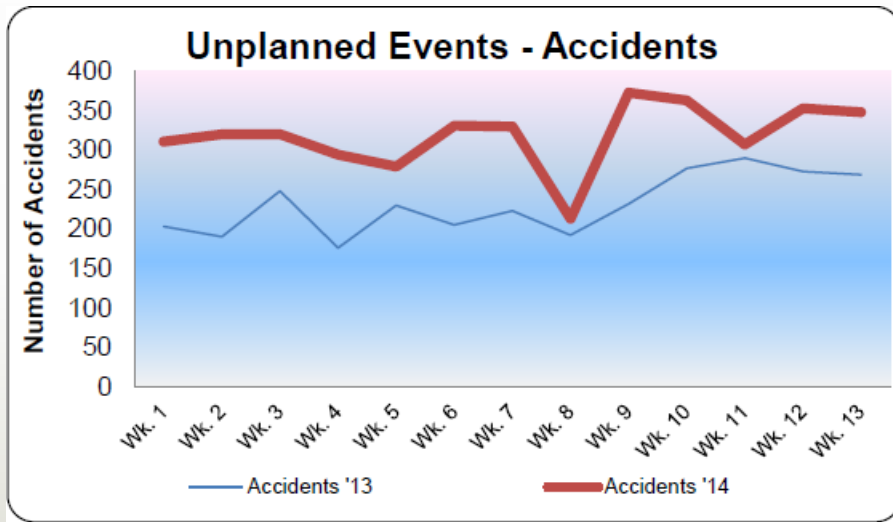
Typical crash from GDOT NaviGator ITS weekly perf msrs 3/27/14

An accident involving two cars and a charter bus blocked all lanes of westbound I-20 at Langhorn Street (Fulton County) at about 10:30am Wednesday morning. The charter bus had no passengers. The accident resulted in one person being entrapped in the wreckage, and a total of four people were transported to local hospitals. One left lane was opened to traffic by 10:55am and all lanes were opened by 11:05am.



Atlanta growth

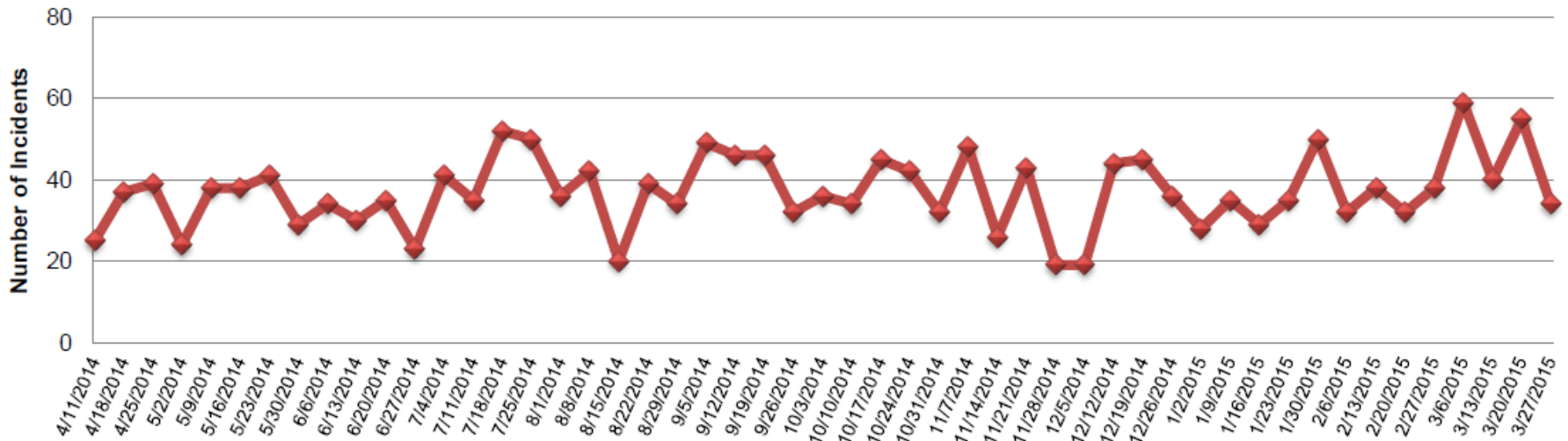
Typical crash from GDOT NaviGator ITS weekly perf msrs 3/27/14



Atlanta performance

Typical crash from GDOT NaviGator ITS weekly performance 3/27/14

Incidents Involving Tractor Trailers



Atlanta is #1 AJC.com March 31, 2014 Report

Nancy Clanton
The Atlanta Journal-Constitution

Report: 200 dead from rollovers in Georgia since 2001

© 9:13 a.m. Tuesday, March 31, 2015 | Filed in: News



John Spink

A sharply curving DeKalb County interstate ramp that has claimed numerous trucks over the years snared another on May 27, 2014, when a tractor-trailer loaded with 30,000 pounds of eggs overturned. The wreck happened on the ramp from I-285 southbound to I-20 eastbound.

■ ATRI Report:

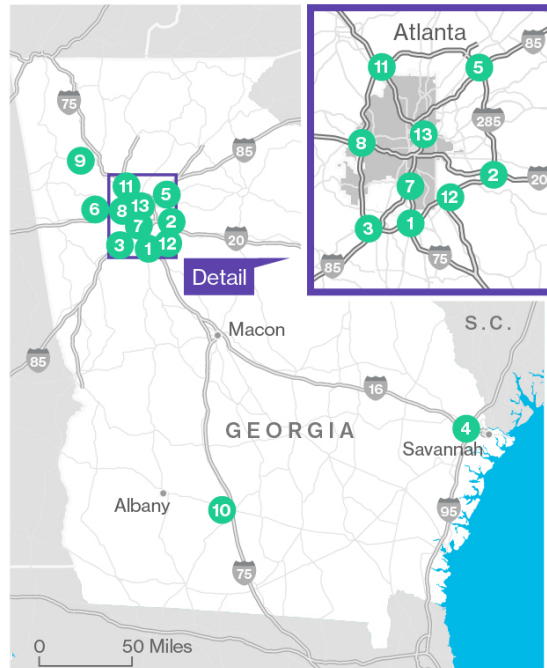
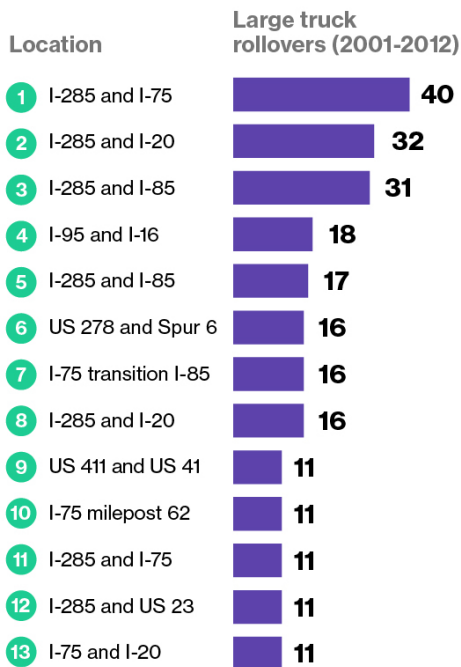
- 200 rollover trucks since 2001 in Atlanta
- More than 200 dead (52% died in 2012)
- January had 2 crashes, beer truck and chicken
- March fatality (Mustang versus Tractor Trailer)
- Top 10 areas all involve interstate ramps

Atlanta is #1

bloombergbusiness.com March 31, 2014 Report

Hot Spot Warnings

Testing is coming soon for an in-cab alert for truck drivers approaching sharp curves. Warnings would sound for danger zones around Atlanta, where 212 rollovers have occurred since 2001.



Potential fixes:

- Advance signing at ramps
- Required stability control and braking
- In cab warning devices of danger zones (sharp curves, hills, etc)

Sample Quick Clearance Programs

- Incentive Based Programs
 - Washington Blok-Buster Program
 - Florida Rapid Incident Scene Clearance Program (RISC)
 - GDOT Towing and Recovery Incentive Program (TRIP)
- Contract Based Programs
 - Colorado Heavy Tow Program
 - Contract Based for Standby Wreckers along I-70
 - California Program
 - Contract Based Mechanical Assist along I-710
- IDOT Program – State Run Program



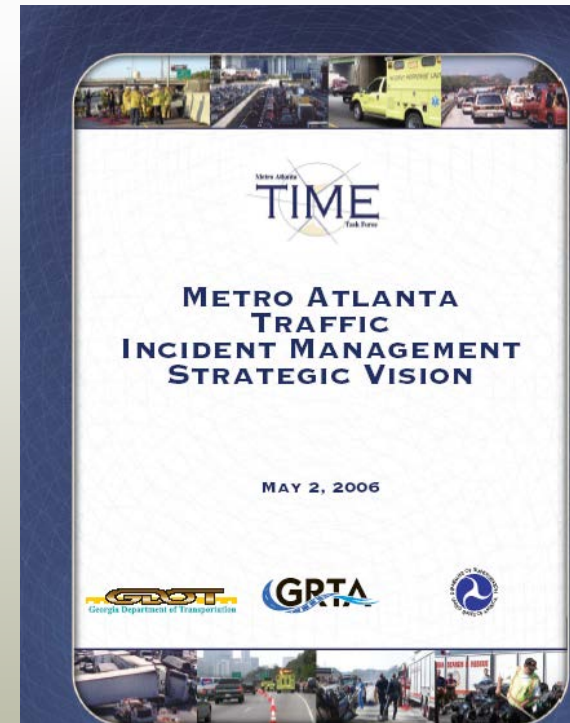


What is TRIP?

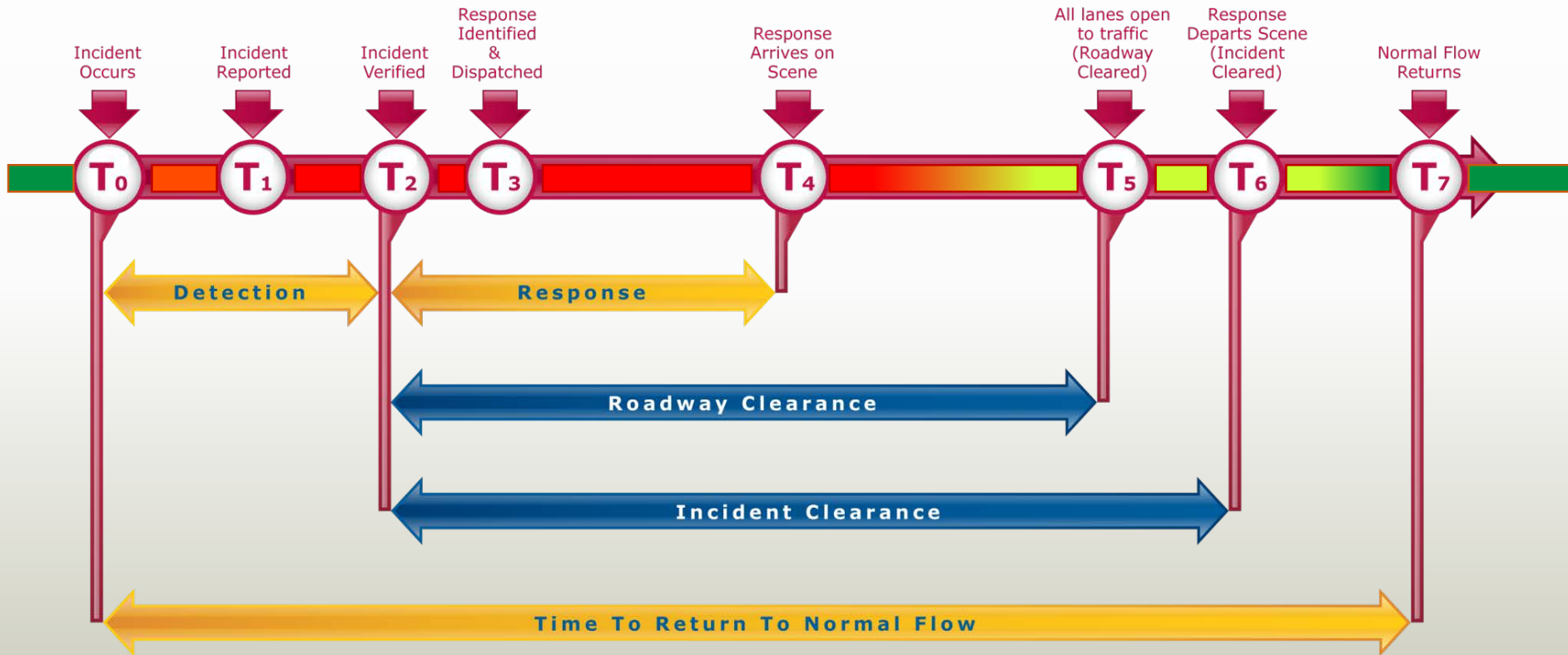
Georgia Towing and Recovery Incentive Program (TRIP) Implemented January 2008

- TRIP is a Quick Clearance incentive program to pay heavy-duty recovery companies a monetary bonus for clearing commercial vehicle wrecks within 90 minutes
- TRIP is an initiative of the TIME Task Force and a component of the 2006 Metro Atlanta Traffic Incident Management Enhancement Strategic Vision

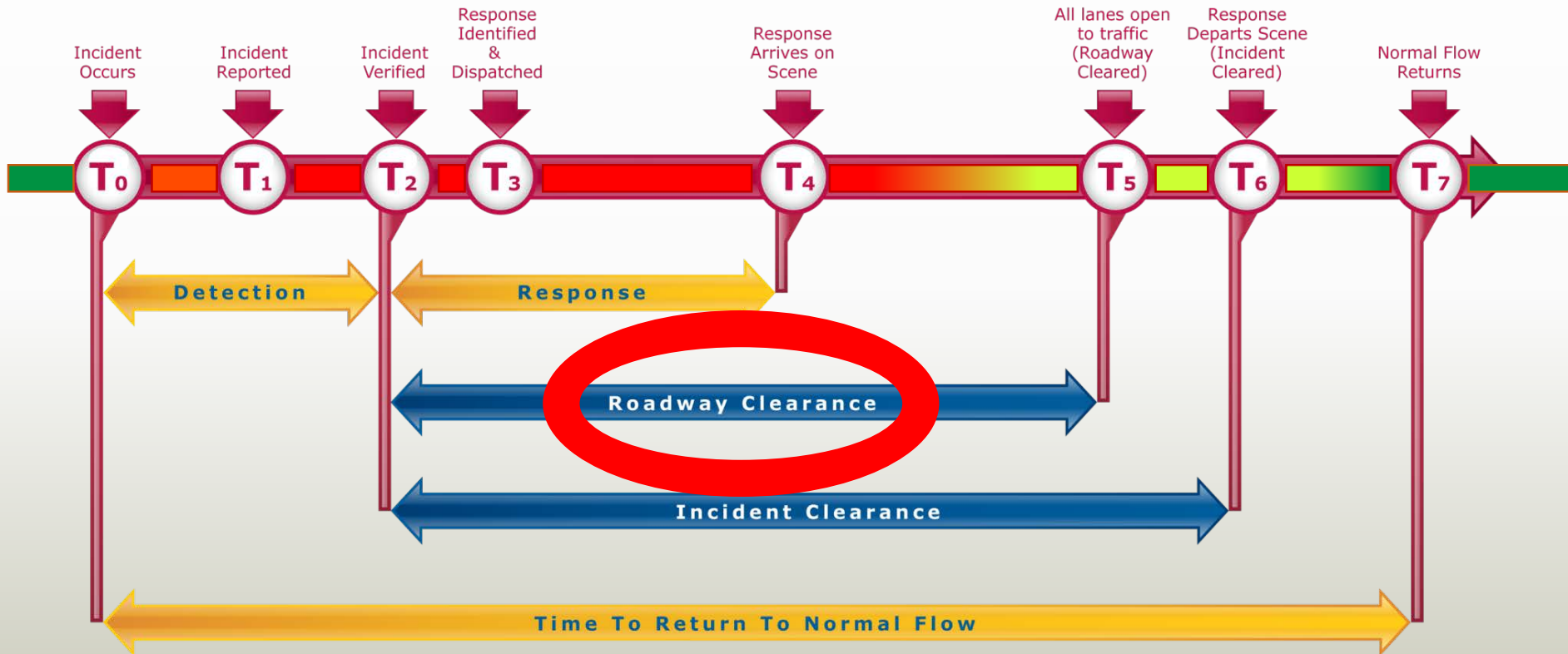
www.timetaskforce.com



Georgia Incident TIMEline



Georgia Incident TIMEline



Program Overview

- Began in January 2008
- Activated for Major Commercial Vehicle Incidents by HERO and/or **Police Agencies**
- Incentive of \$2500 or \$3500
- 90 minute roadway clearance
- Disincentive = \$600 (3 hr mark) + \$10 per minute after 3 hours
- Time Keeper = GDOT (HERO & TMC)

TRIP Company Requirements

24/7 Equipment Availability

- 30-ton and one 50-ton recovery wrecker (or 40-ton Rotator)
- Support Truck including a full set of tools, traffic control & fluid spill mitigation capability
- Other specialized heavy equipment (low-boys, bobcats, etc)

Training

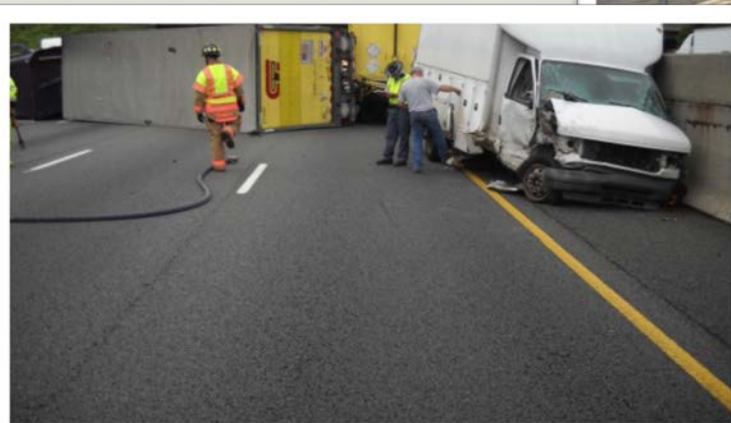
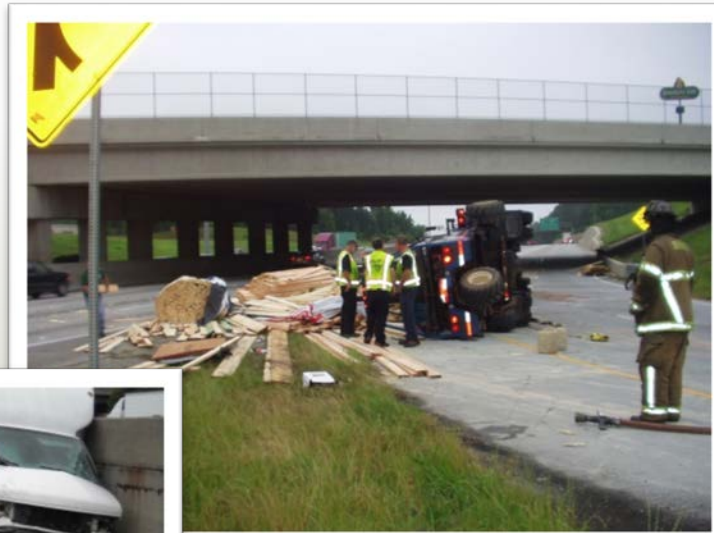
- Operators and Supervisors with full certification in advanced heavy towing and recovery, MUTCD traffic control, Hazardous Material awareness, TIM 'Quick Clearance' strategies and NIMS
- Continuing Education Annually (8 hours)

Program Details

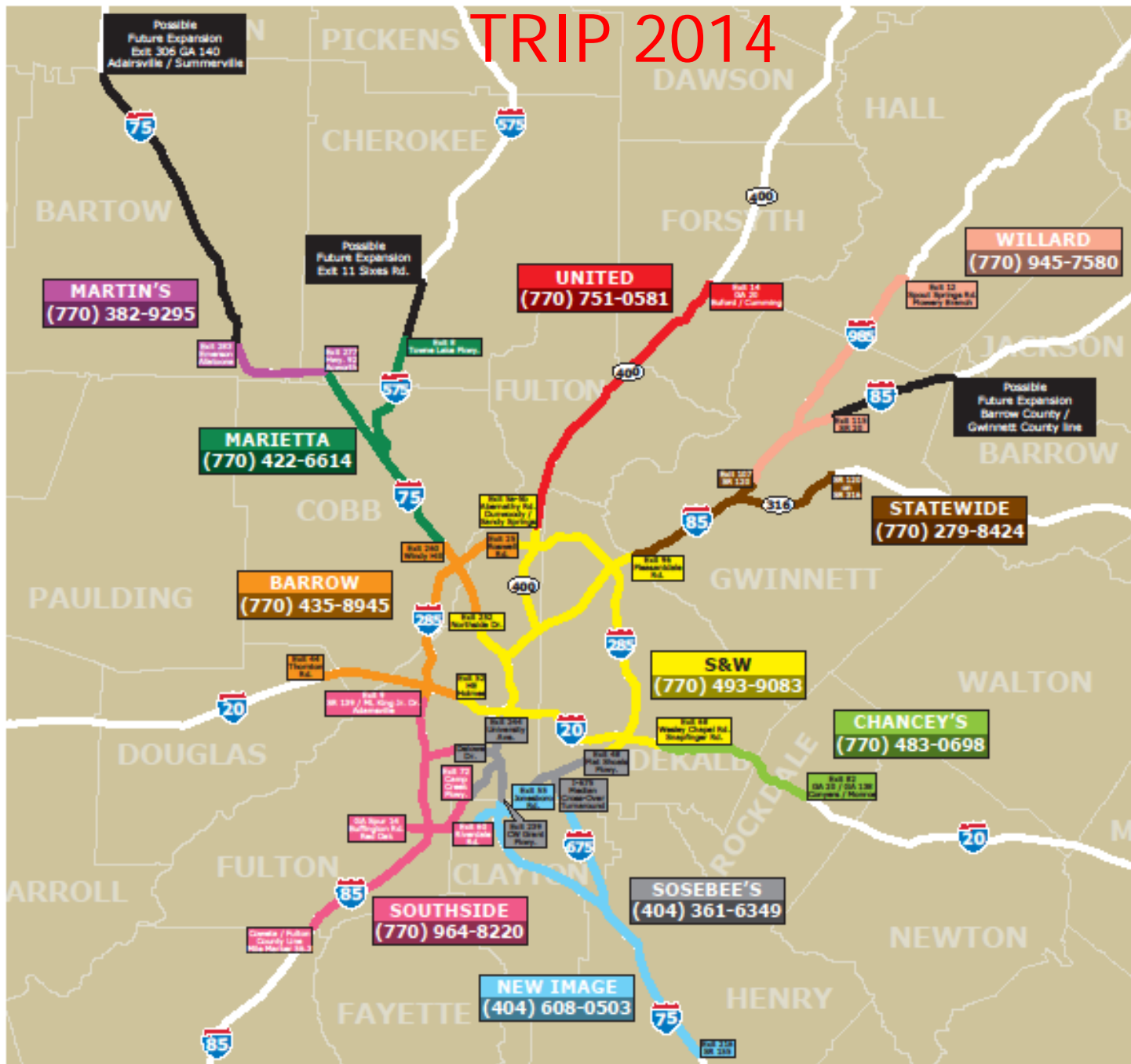
- Inspections
 - On-site yard and equipment inspections
- Response Times
 - 30 min (5:30 am – 7 pm M-F) for on-scene Supervisor
 - 45 min (peak hrs) for on-scene Equipment
- Safety Vests – ANSI Class 2 or 3
- Open Enrollment/Application Process
- After Incident Review of All TRIP Incidents

TRIP Territories

- Routes Negotiations completed
- April 1, 2014 to March 2016



TRIP 2014



TRIP 2015

Updated 3/5/15



When will a TRIP be activated?

Vehicle Types:

- Truck Tractor Semi-Trailer Combo (US DOT Class 8)
- Trucks > 26,000 lbs (Class 7 or 8)
- Large Motor Homes & Motor Coaches (Class 5 or 6)
- Busses \geq 16 passengers (Class 6, 7, or 8)
- Aircraft
- Major Transportation Emergency / Discretionary

TRAA Vehicle Classifications

CLASS 3 - LIGHT- OR MEDIUM-DUTY

(10,001 - 14,000 lbs. GVWR - 6 tires or more)*



CLASS 4 - MEDIUM-DUTY

(14,001 - 16,000 lbs. GVWR - 6 tires or more)*



CLASS 5 - MEDIUM-DUTY

(16,001 - 19,500 lbs. GVWR - 6 tires or more)*



CLASS 6 - MEDIUM-DUTY

(19,501 - 26,000 lbs. GVWR - 6 tires or more)*



Class 3 through 6 include a range of mid-sized to larger vehicles including delivery trucks, utility vehicles, motor homes, package parcel trucks, ambulances, small dump trucks, landscape vehicles, small flatbed and stake-type trucks, refrigerated and box trucks, small and medium-duty buses (school and local transit buses.)

CLASS 3, 4, 5 & 6 - LIGHT- OR MEDIUM-DUTY TOW

Gross Vehicle Weight Rating (10,001 up to 26,000 lbs.)

- Year, make and model?
- Body type – pickup truck, box truck, flatbed, step van
- What is the load and is it damaged?
- Pickup, van, shuttle bus or motor home?
- Number of occupants? Keys?
- Vehicle description is critical to determine the proper tow vehicle

VEHICLES IN THESE CLASSES USUALLY HAVE SIX TIRES.

CLASS 7 - HEAVY-DUTY

(26,001 - 33,000 lbs. GVWR - 6 tires or more)*



CLASS 8 - HEAVY-DUTY

(33,001 lbs. and over GVWR - 10 tires or more)*



Class 7 and 8 includes a range of heavier vehicles including large delivery trucks, motor coaches, all tractor-trailer combinations, refuse trucks, construction vehicles, etc.

CLASS 7 AND 8 - HEAVY-DUTY TOW

Gross Vehicle Weight Rating

(Class 7 - 26,001 to 33,000 lbs.)

(Class 8 - 33,001 and up to state limit)

- Year, make and model? Two or three axle truck or tractor-trailer?
- Bus or motor home? What is the load and is it damaged?
- Number of occupants? Keys?

STRAIGHT TRUCKS, BUSES OR MOTOR HOMES IN THESE CLASSES WILL USUALLY HAVE SIX TO TEN TIRES. TRACTOR AND TRAILER COMBINATIONS WILL HAVE FOURTEEN OR MORE TIRES.

When will a TRIP be activated?

Incident Types:

- Rollover blocking any travel lanes
- Multiple truck crash
- Jack-knifed and not drivable
- Lost Load on or affecting travel lane(s)
- Load Shifted on or affecting travel lane(s)
- Lost tandems / axle or buckled trailer affecting travel lane(s)
- Fire with tires burned off or cargo spilled
- Major impact with guard rail, bridge support or structure on top of barrier wall
- Bus crash with multiple injuries
- Airplane

How is a TRIP Activated?

HERO Supervisor OR Police



Notify GDOT Traffic Management Center
(404) 886-0579



GDOT TMC notifies TRIP Company



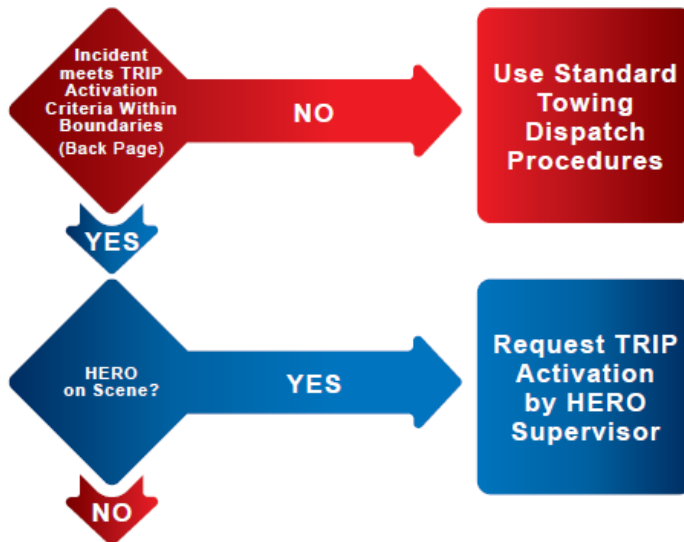
TRIP Cheat Sheet and Outreach

TOWING RECOVERY INCENTIVE PROGRAM (TRIP)

To Activate TRIP Notify Dispatch to Call
GDOT TMC at 440-635-8028

IMPORTANT:

The GDOT TMC is responsible for dispatching TRIP companies directly. Local 911 dispatchers should contact the GDOT TMC, not the towing companies.



TRIP ACTIVATION PROCEDURES:

1. Dispatch/Call GDOT TMC to declare TRIP
2. Confirm local dispatch is not calling tow company
3. Verify TRIP ID Badges upon tow company arrival
4. Coordinate TRIP with HERO Supervisor upon arrival

ACTIVATION CRITERIA



When designated vehicle types are involved in incident-types below inside the boundaries, **Activate TRIP!**

Vehicles - DOT Class 5, 6, 7 and 8:

- ✓ Truck Tractor Semi-Trailer Combinations
- ✓ Trucks over 26,000 lbs. or Bobtail Tractors
- ✓ Large Motor Homes (40'+) and Motor Coaches
- ✓ Busses
- ✓ Aircraft (activate in any incident involving aircraft)

Incident Types:

- ✓ Rollover blocking any travel lanes
- ✓ Multiple truck crash
- ✓ Jack-knifed and not drivable
- ✓ Lost Load on or affecting travel lane(s)
- ✓ Load Shifted on or affecting travel lane(s)
- ✓ Lost tandems / axle or buckled trailer affecting travel lane(s)
- ✓ Fire with tires burned off or cargo spilled
- ✓ Major impact with guard rail, bridge support or structure on top of barrier wall

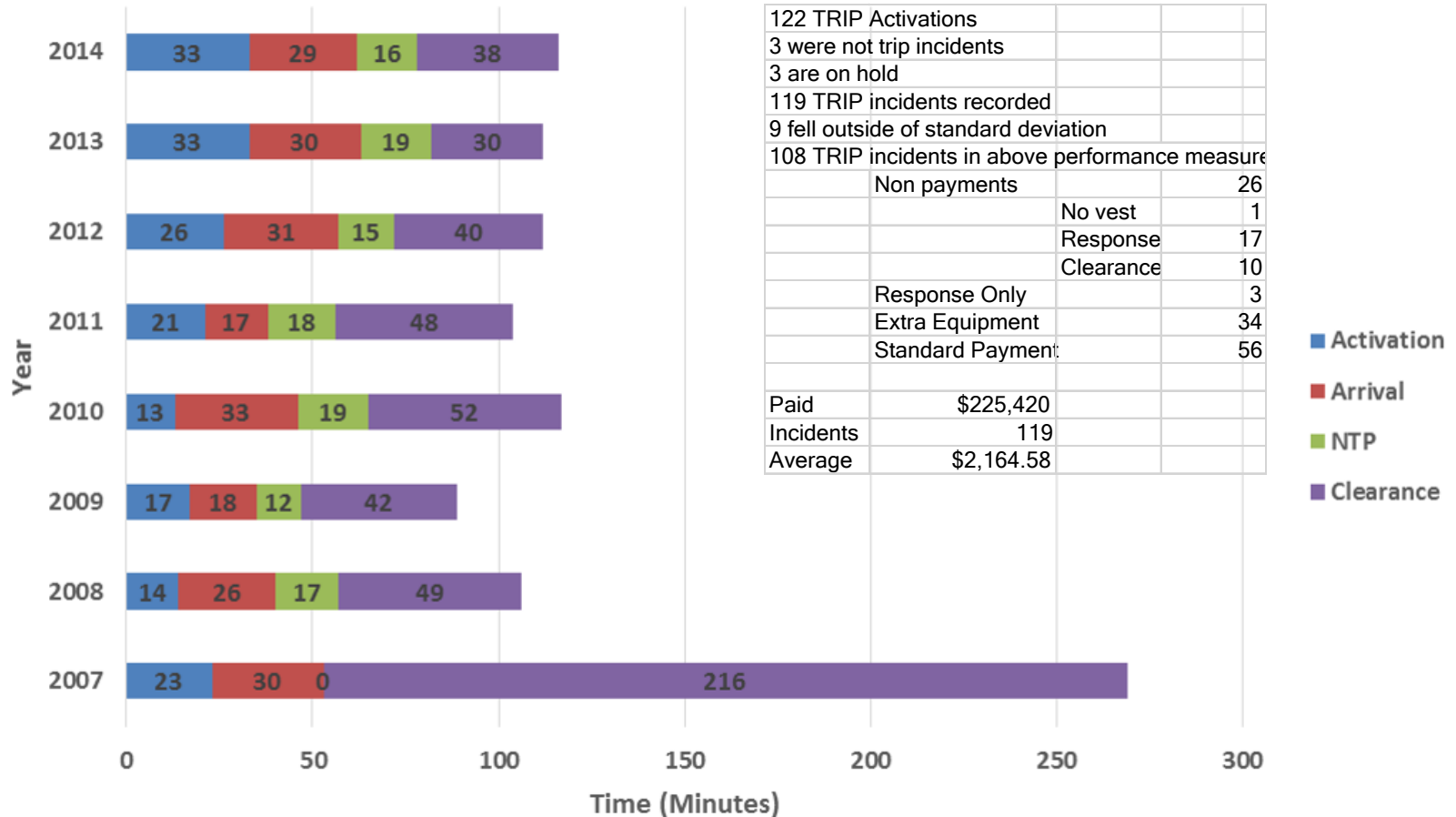
TRIP Boundaries:

- ✓ I-285 & all interstates inside Perimeter (plus GA 400 & I-675)
- ✓ Limits: I-85 North to Gwinnett/Barrow line, I-985 to Flowery Branch, SR 316 to SR 120, I-85 South to SR 34, I-75 North to SR 53, I-575 to Sixes Rd, I-75 South to SR 155, I-20 West to SR 61, I-20 East to Alcovy Rd.

TRIP Performance Measures

Comparison of Time to Roadway Clearance 2007 – 2014

Time to Roadway Clearance 2007-2014



122 TRIP Activations		
3 were not trip incidents		
3 are on hold		
119 TRIP incidents recorded		
9 fell outside of standard deviation		
108 TRIP incidents in above performance measure		
Non payments		26
No vest		1
Response		17
Clearance		10
Response Only		3
Extra Equipment		34
Standard Payment:		56
Paid	\$225,420	
Incidents	119	
Average	\$2,164.58	

■ Activation
■ Arrival
■ NTP
■ Clearance

TRIP Performance Measures

- 515 Activations to Date
 - 2008 = 59 incidents (\$154,900)
 - 2009 = 51 incidents (\$132,100)
 - 2010 = 34 incidents (\$93,000)
 - 2011 = 52 incidents (\$123,800)
 - 2012 = 89 incidents (\$227,500)
 - 2013 = 111 incidents (\$285,700)
 - 2014 = 119 incidents (\$225,420)

TOTAL Incentives Paid = \$1,242,420



TRIP Performance Measures

- 515 Activations to Date

- 2008 = 59 incidents (\$154,900)
- 2009 = 51 incidents (\$132,100)
- 2010 = 34 incidents (\$93,000)
- 2011 = 52 incidents (\$123,800)
- 2012 = 89 incidents (\$227,500)
- 2013 = 111 incidents (\$285,700)
- 2014 = 119 incidents (\$225,420)

TOTAL Incentives Paid = \$1,242,420 *

* does not include “Snowpocalypse 2014”



TRIP Performance Measures

- Evaluation completed by 3rd Party in 2011
- Cost savings PER INCIDENT = \$456,396
- Percentage of Savings = 71%
- Financial benefit of TRIP for 2008 & 2009 = \$9,154,431
- Benefit / Cost of 11:1



HERO Supervisor Responsibilities

- Activate TRIP quickly
 - Coordinate with TMC
 - Verify CERTIFIED TRIP
- Supervisors/Operators are on-scene
- Relay all timestamps to TMC
 - Take pictures of scene
 - Discuss issues with management prior to AIR
 - Participate in monthly AIR



TMC Responsibilities

- Determine correct TRIP company from map
- Notify TRIP Company of Activation
- Record all time stamps
- Provide HERO Supervisor name to the TRIP Company
- Provide information to TRIP Companies when calls are received.

On-Scene Police Responsibilities

- Coordinate with on-scene HERO Supervisor
- Activate TRIP if HERO is not on-scene
- Call TMC @ (404) 886-0579 and identify agency and name
- Relay time information of TRIP Company until HERO is on-scene

E-911 Dispatchers

- After officer notification of TRIP, call GDOT TMC @ (404) 886-0579.
- Do not call towing company!



Quiz.... Is this a TRIP?



Quiz.... Is this a TRIP?



Thank you!

Brian Purvis

brian.purvis@parsons.com

(252) 289-0983 cell

(404) 320-1776 x2846 office

