



Expanding and Enhancing MDTA's System

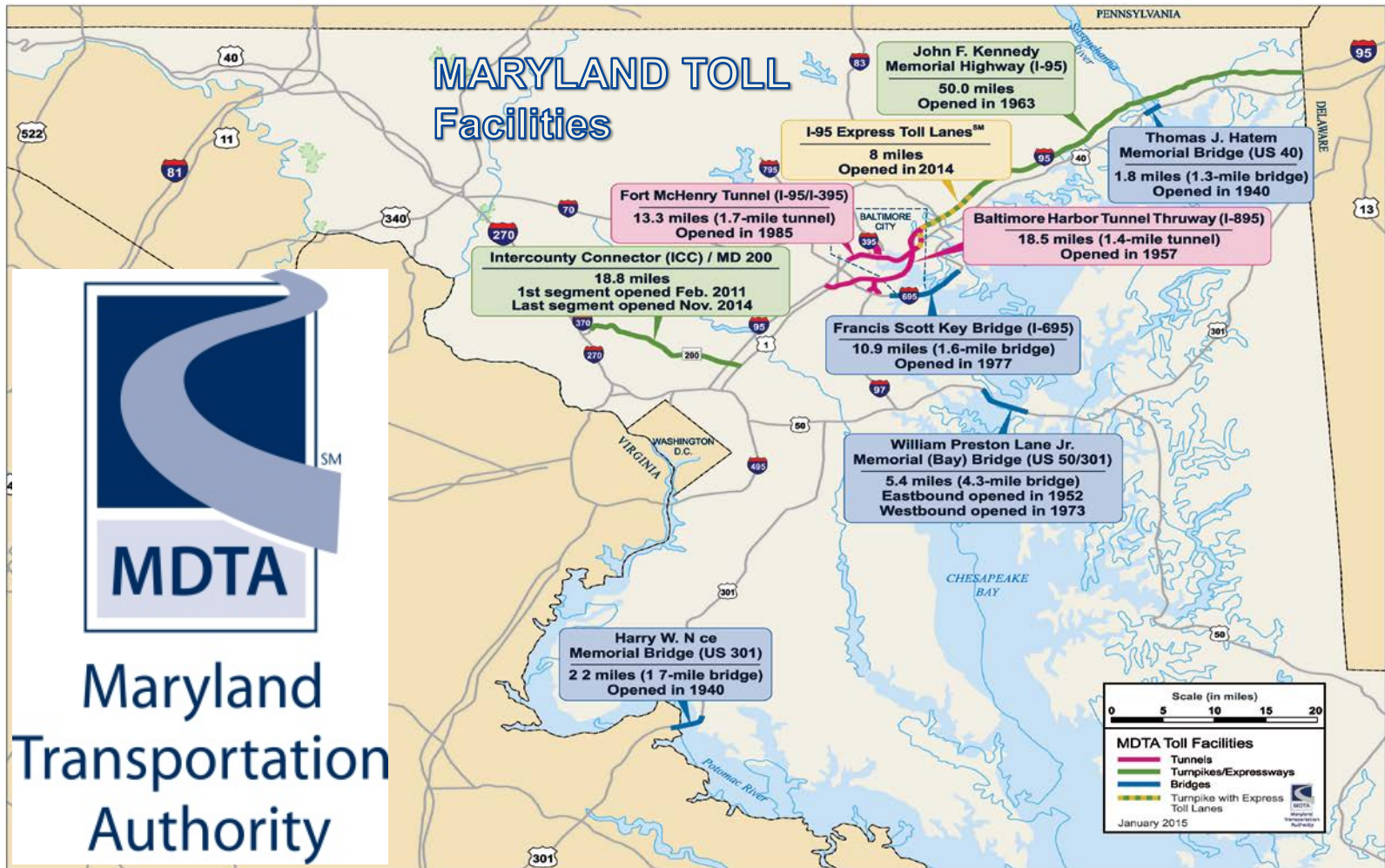
March 31, 2015



Maryland
Transportation
Authority



MARYLAND TOLL Facilities





MDTA Facilities



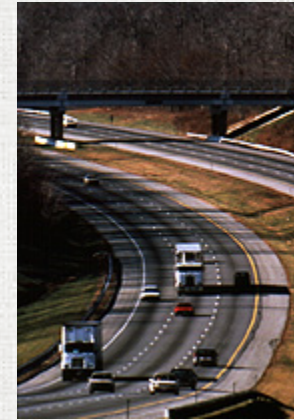
Harry W. Nice Memorial Bridge (1940)



Francis Scott Key Bridge (1977)



Baltimore Harbor Tunnel (1957)



John F. Kennedy Memorial Highway (1963)

Intercounty Connector/MD 200 (Completion 2014)



Thomas J. Hatem Memorial Bridge (1940)

William Preston Lane, Jr Memorial Bridge (1952/1973)



I-95 Express Toll Lanes (Completion 2014)



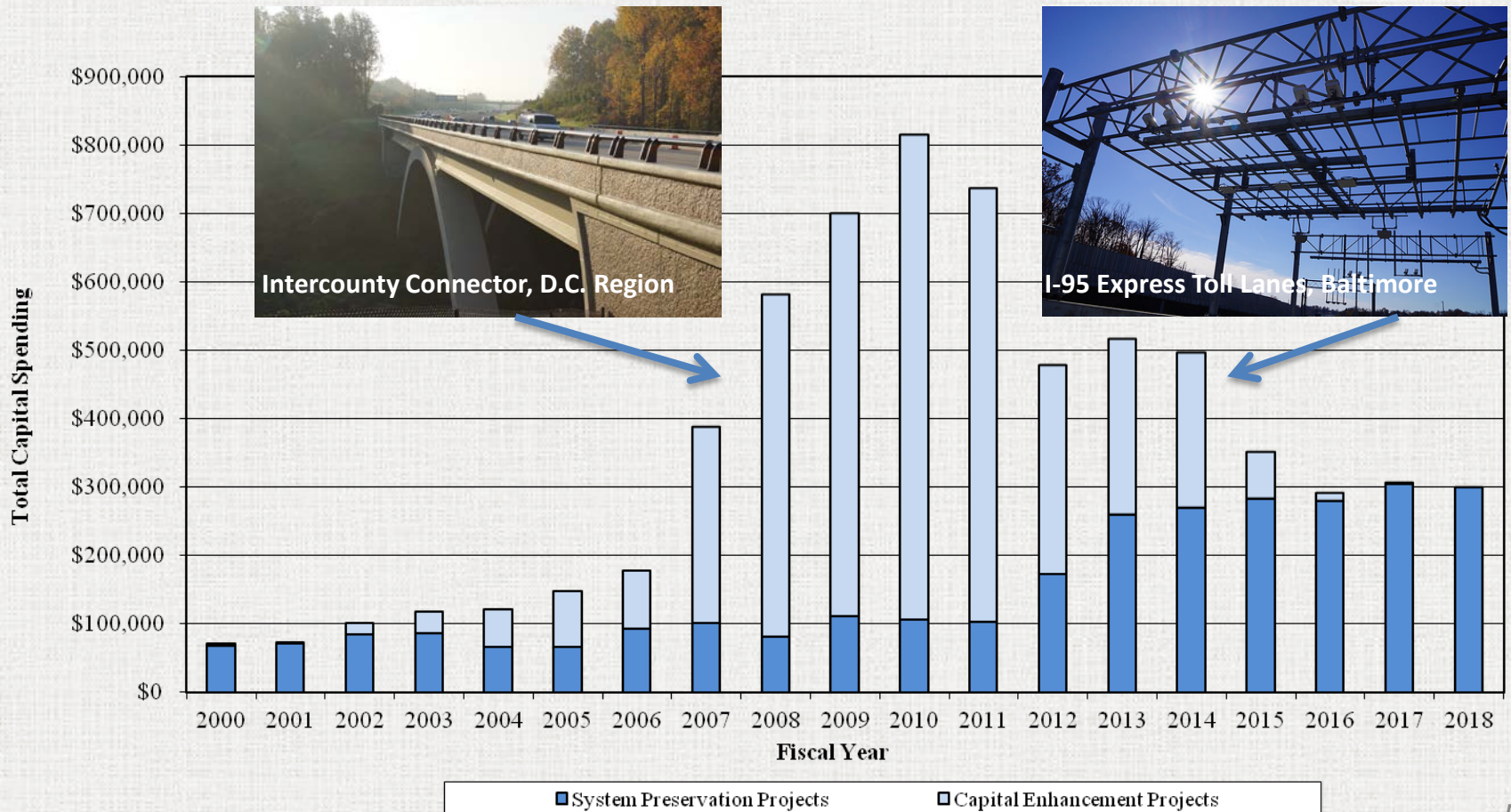
Big Ticket Items



- **\$3.5 billion to build Intercounty Connector (ICC)/MD 200 in Washington, D.C. metro area and I-95 Express Toll Lanes in Baltimore**
- **\$56 million reconstruction of Maryland House and Chesapeake House Travel Plazas on I-95**
- **\$1.9 billion system preservation program**



Capital Spending By Year





I-95 Travel Plazas – Before & After



Maryland House



Chesapeake House





Balancing Act

- **Financial Capacity**
- **Project Delivery Ability**
- **Organizational Capabilities**
- **Political Environment**



Previous Financial Capacity

- Debt capacity was high
- Toll rates were relatively low
- Heavy congestion in two key economic corridors (D.C. Suburbs and Baltimore)
- System preservation needs were modest but growing
- Travel plazas were well utilized but couldn't accommodate future growth or modern amenities

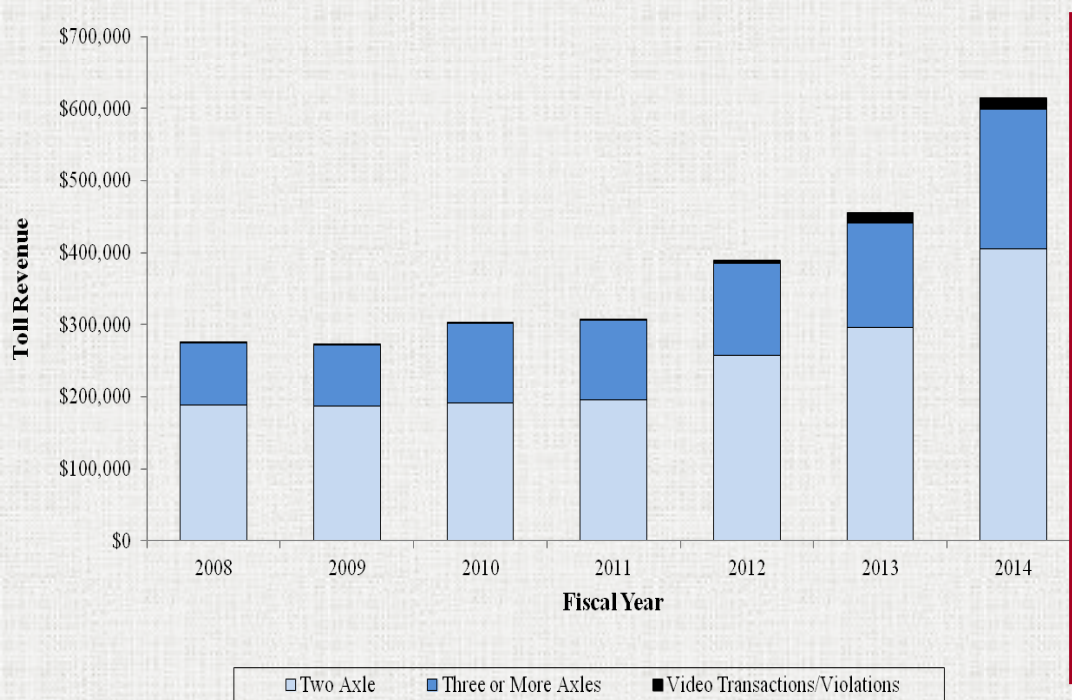




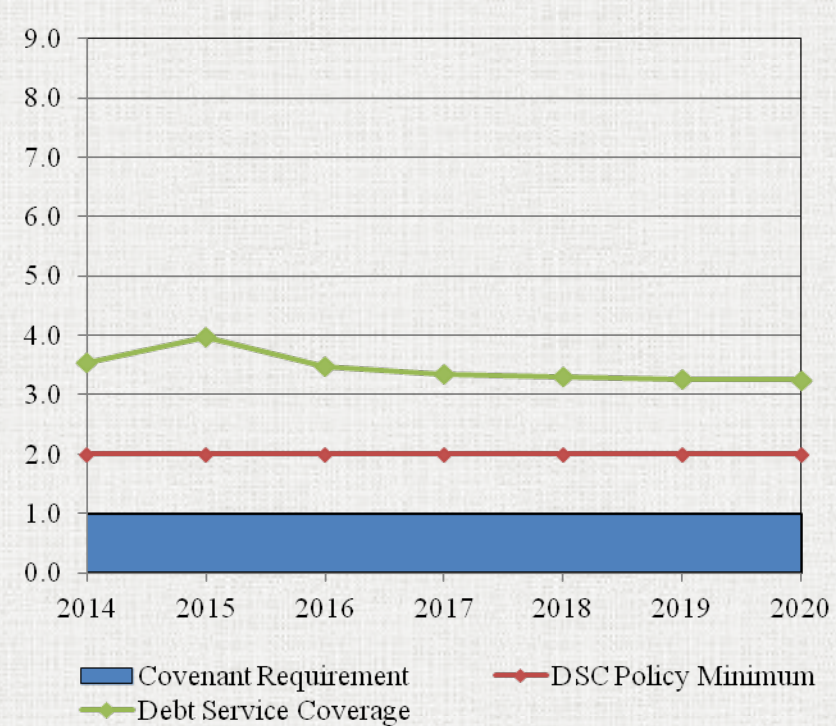
Current Financial Capacity

In 2015 the MDTA Continues to be Financially Sound

Toll Revenue



Debt Service Coverage

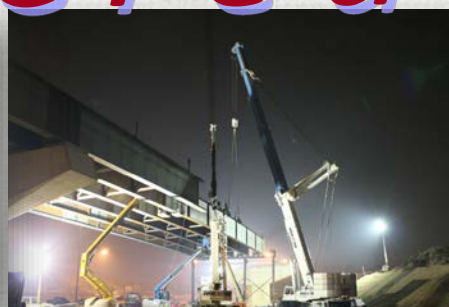




Project Delivery Capability

- Partnered with MDOT and Maryland State Highway Administration to build ICC using GEC and Design Build
- Built I-95 Express Toll Lanes using GEC and Design Bid Build
- Elevated level of inspection program to evaluate long-term needs and launch System Preservation Program
- Utilized P3 to rebuild two of the busiest travel plazas in the country

Creativity





Organizational Ability - Then





Organizational Ability - Now

Maryland
Transportation
Authority



TAILGATING
ON THE BAY BRIDGE
Ruffles Feathers.

BAYBRIDGE.COM + 1-877-BAYSPAN
(229-7726)



STAY ALERT

MAJOR ROADWORK

I-95 IN BALTIMORE CITY

THROUGH FALL 2015

@TheMDTA #i95bmore





Political Environment





Evolution



**ICC/I-95 Interchange
2009 & Today**

**I-95 Express Toll Lanes
I-95/I-695 Interchange
2007 & Today**



Thank you!

Bruce W. Gartner
Executive Director

Maryland Transportation Authority

bgartner@mdta.maryland.gov



Maryland
Transportation
Authority