

# California Road Charge Pilot Program Updates



Developed for IBTTA Panel:  
IS TOLLING A BRIDGE TO VMT?

BRIAN ANNIS



# Why is This Happening?



Aging  
Infrastructure

Shrinking  
Funding

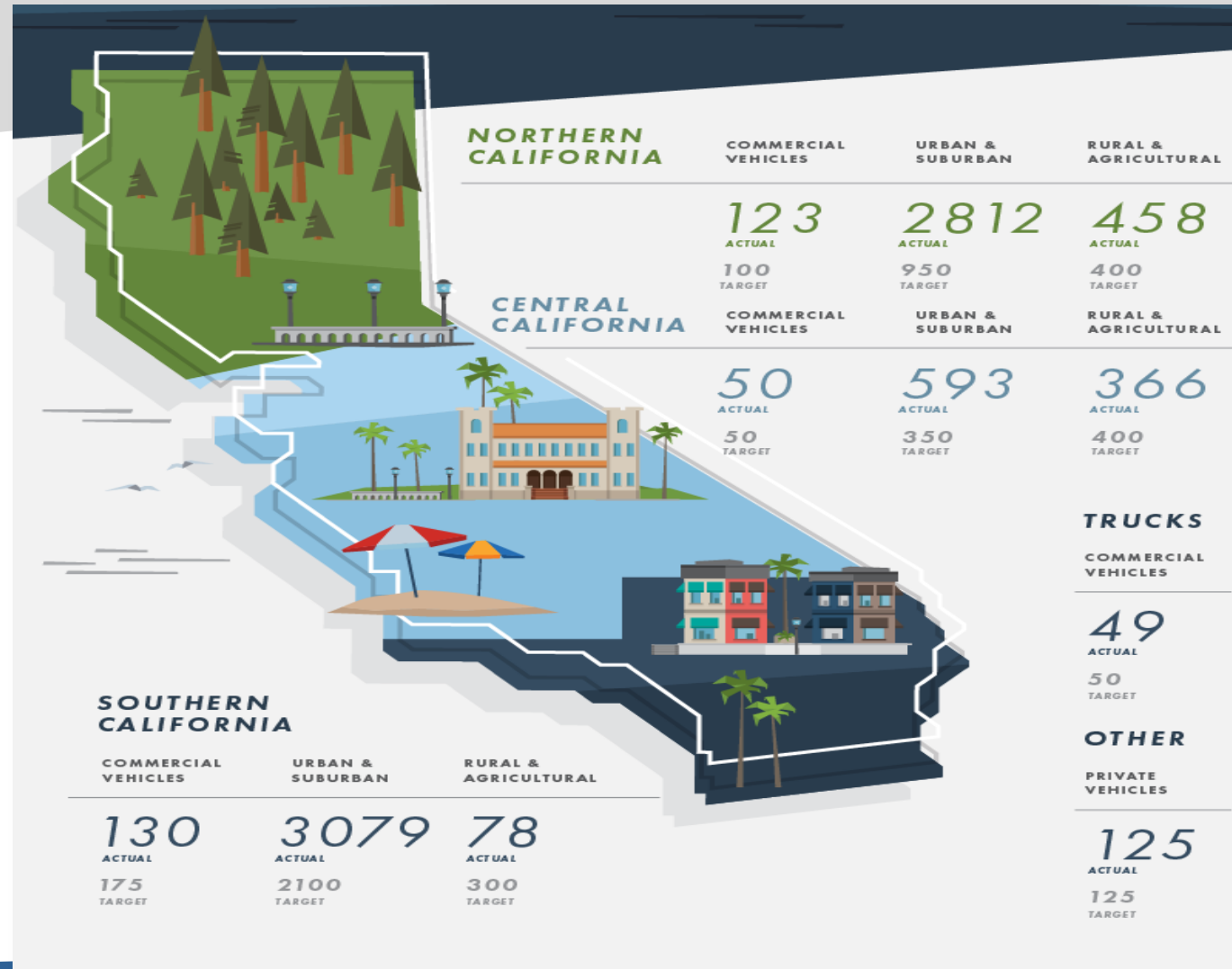


Increased  
Requirements

Fuel  
Efficiency



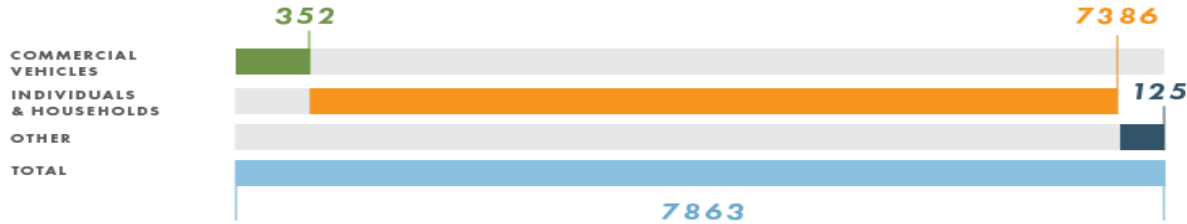
# Volunteer Recruitment Breakdown



# Volunteer Recruitment Breakdown



## SUMMARY OF VOLUNTEERS



### GENDER



### ETHNICITY



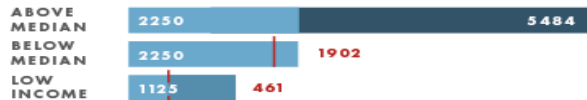
### AGE



### VEHICLE TYPE



### INCOME



### REGION



■ TAC MINIMUM PARTICIPANTS ■ VOLUNTEERS TO DATE

### COMMERCIAL TRUCK CATEGORIES

- LARGE INTEGRATED FLEET
- LARGE PRIVATE FLEET
- INTERMODEL OWNER/OPERATORS
- OVER-THE-ROAD OWNER / OPERATORS
- AGRICULTURE - EXPORTERS
- AGRICULTURE - SEASONAL OPERATORS
- AGRICULTURE - PRIVATE FLEET
- CONSTRUCTION
- ENERGY

Californians expressed high interest in being involved!

\*Goal = 5,000 Volunteers  
Signed-Up = 7,863 Volunteers

# Mileage Reporting Methods



## Manual Options:



Time Permit



Mileage Permit



Odometer Charge

## Automated Options:



Plug-In Device



Smartphone App



Car's Built-In Technology

# Enrollments by Method

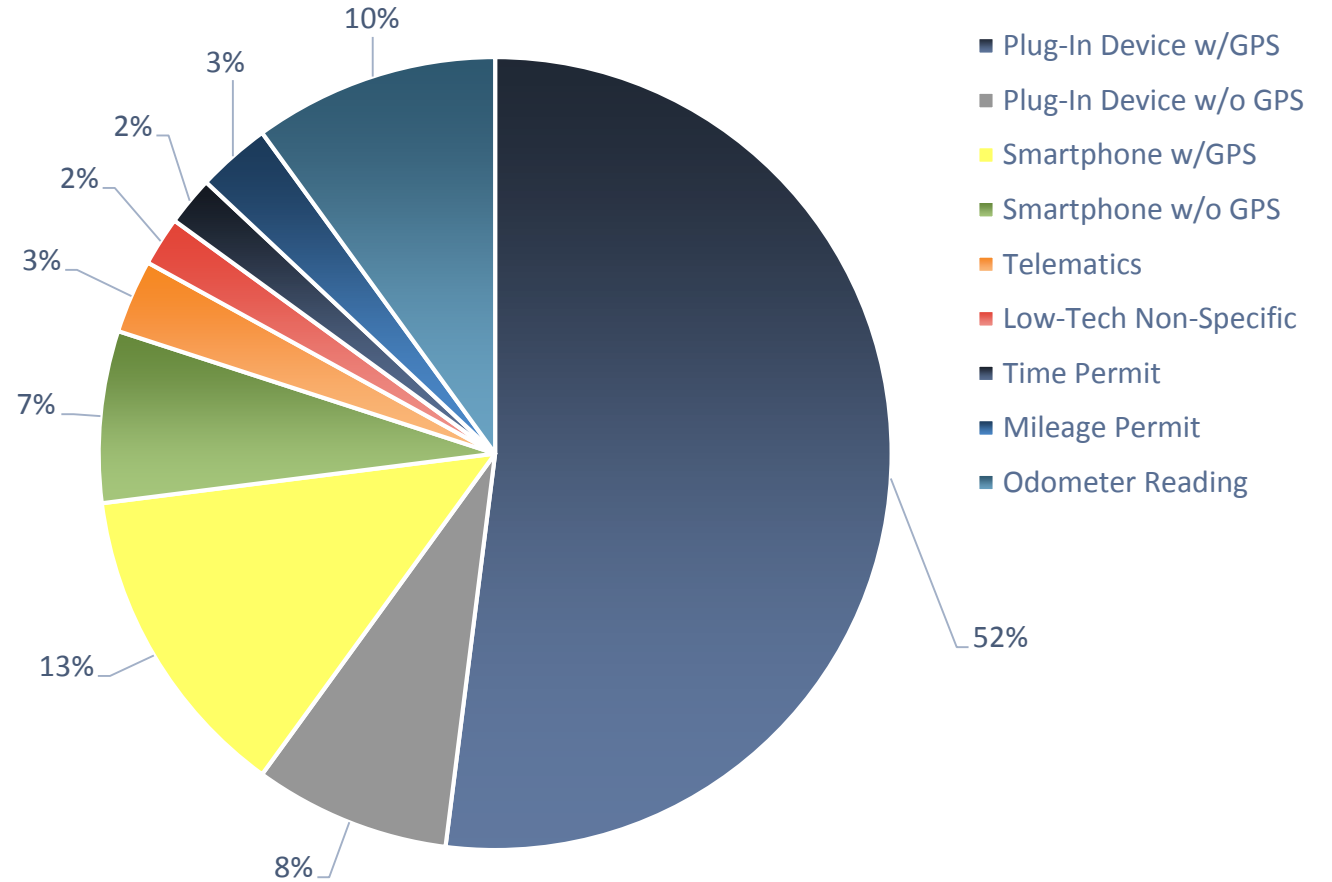


83%

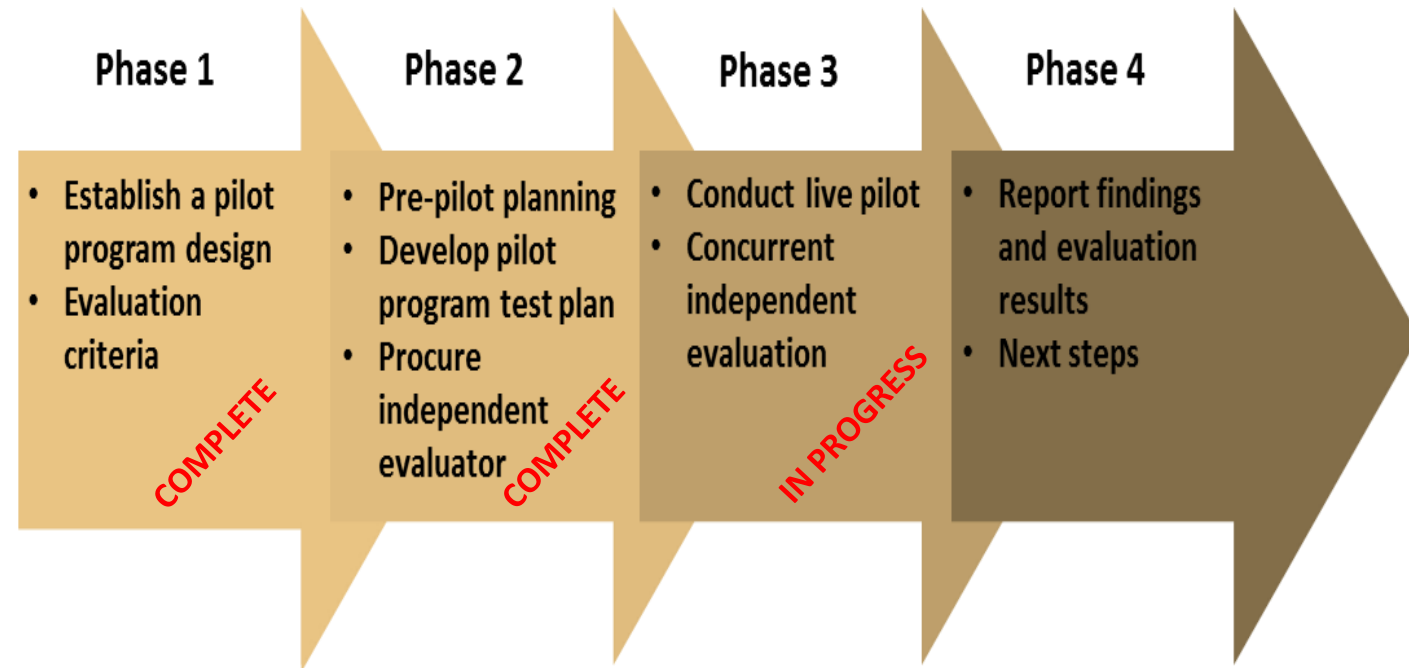
Participants using automated methods

17%

Participants using manual methods



# Schedule Update



# Summer 2017 Pilot Report Will Cover:



• Cost	• Use of revenues
• Privacy	• Security and compliance
• Jurisdictional issues	• Data collection technology
• Feasibility	• Potential for additional driver services
• Complexity	• Implementation issues
• Acceptance	



# Questions?

