

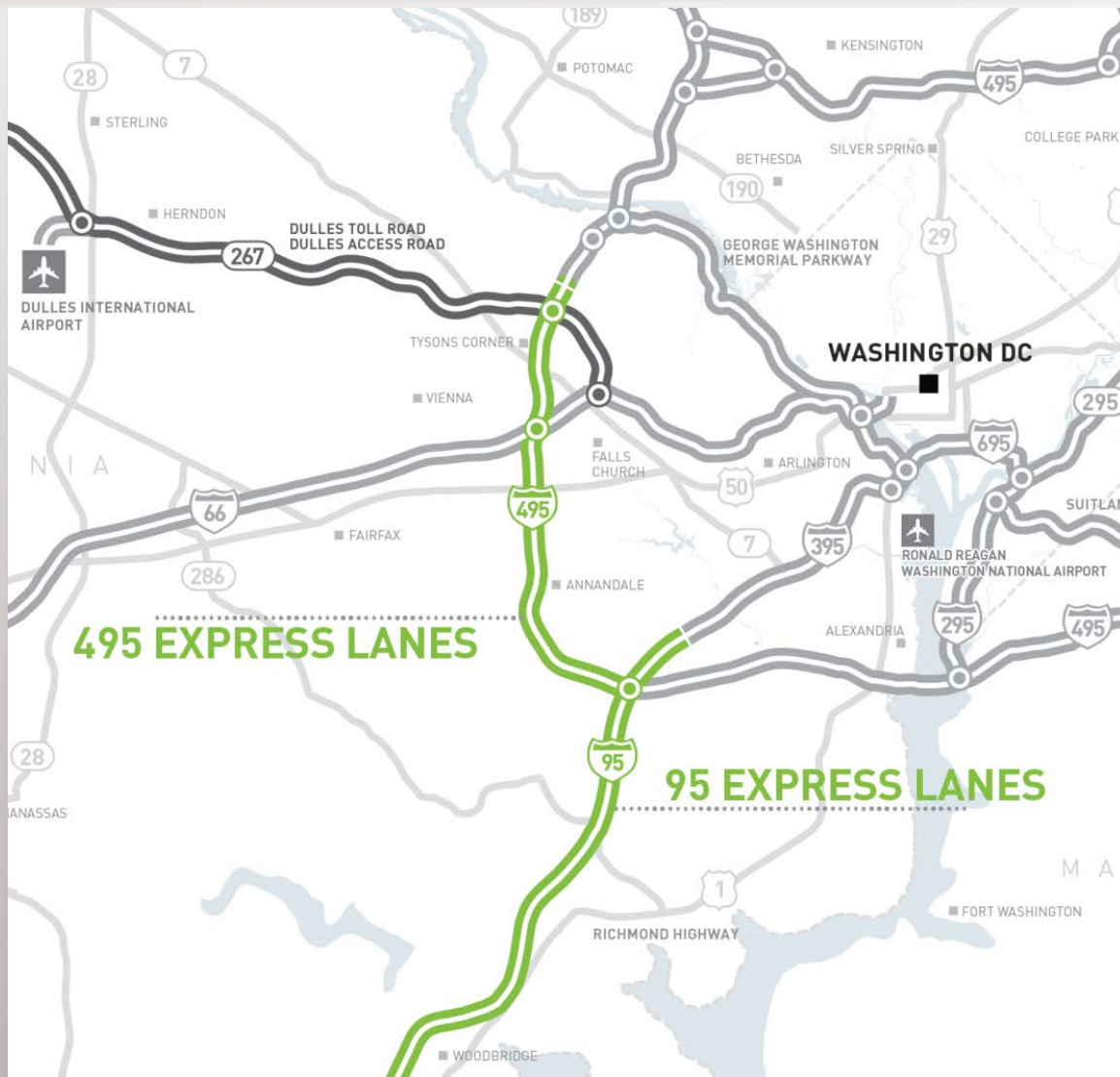


Traffic Management on Managed Lanes

Nicholas Barr, *VP Operations*
May 2016

transurban

NORTHERN VIRGINIA EXPRESS LANES



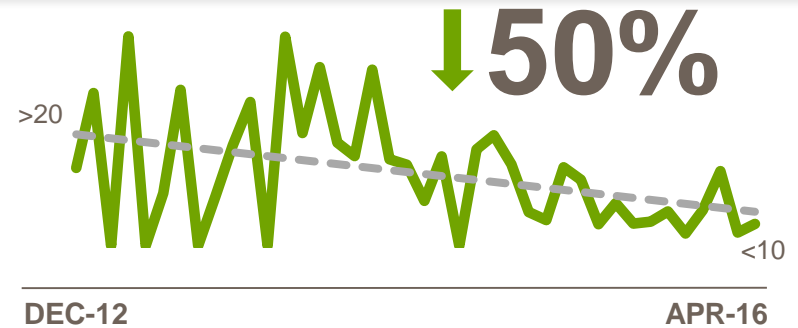
SAFETY PARAMOUNT

LOST TIME INJURY RATE

✓ **4.1 million hours**
without a lost time injury

During 95 Express Lanes construction

ROAD INJURY CRASH INDEX (RICI)



IMPORTANCE OF MAINTAINING MOBILITY ON MANAGED LANES

1. POLICY & NETWORK



500+ bus trips daily



20,000 HOV trips daily



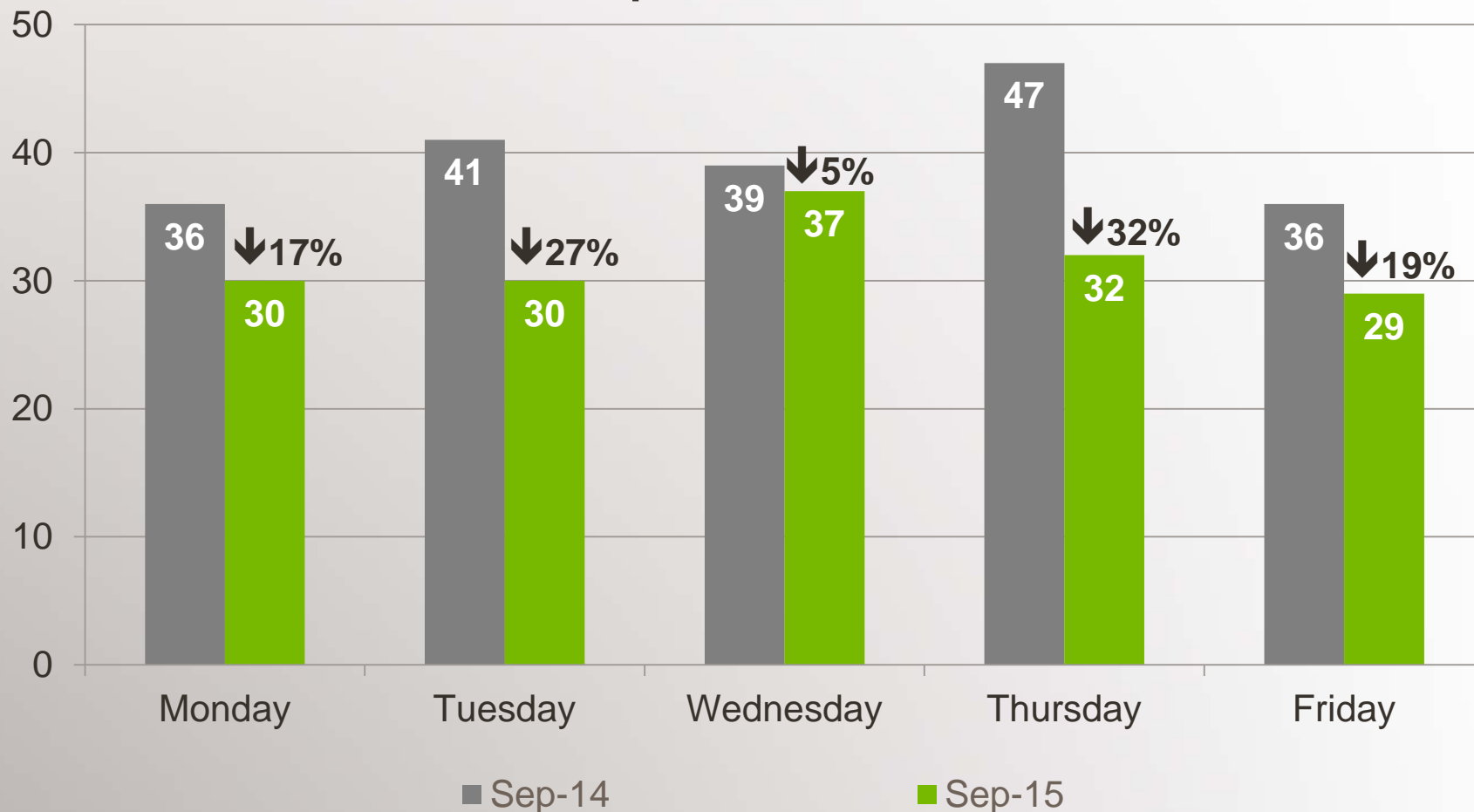
Increased GP speeds

MAINTAIN MOBILITY

MAINTAINING MOBILITY

POLICY BENEFITS – DELIVERING VALUE TO ADD MOTORISTS

95 Express Lanes Northbound General Purpose Lanes Travel Times



IMPORTANCE OF MAINTAINING MOBILITY ON MANAGED LANES

2. CONTRACTUAL REQUIREMENTS



500+ bus trips daily



20,000 HOV trips



1. Network & Policy

- Improved GP speeds
- Bus & HOV trips

2. Contractual Requirements

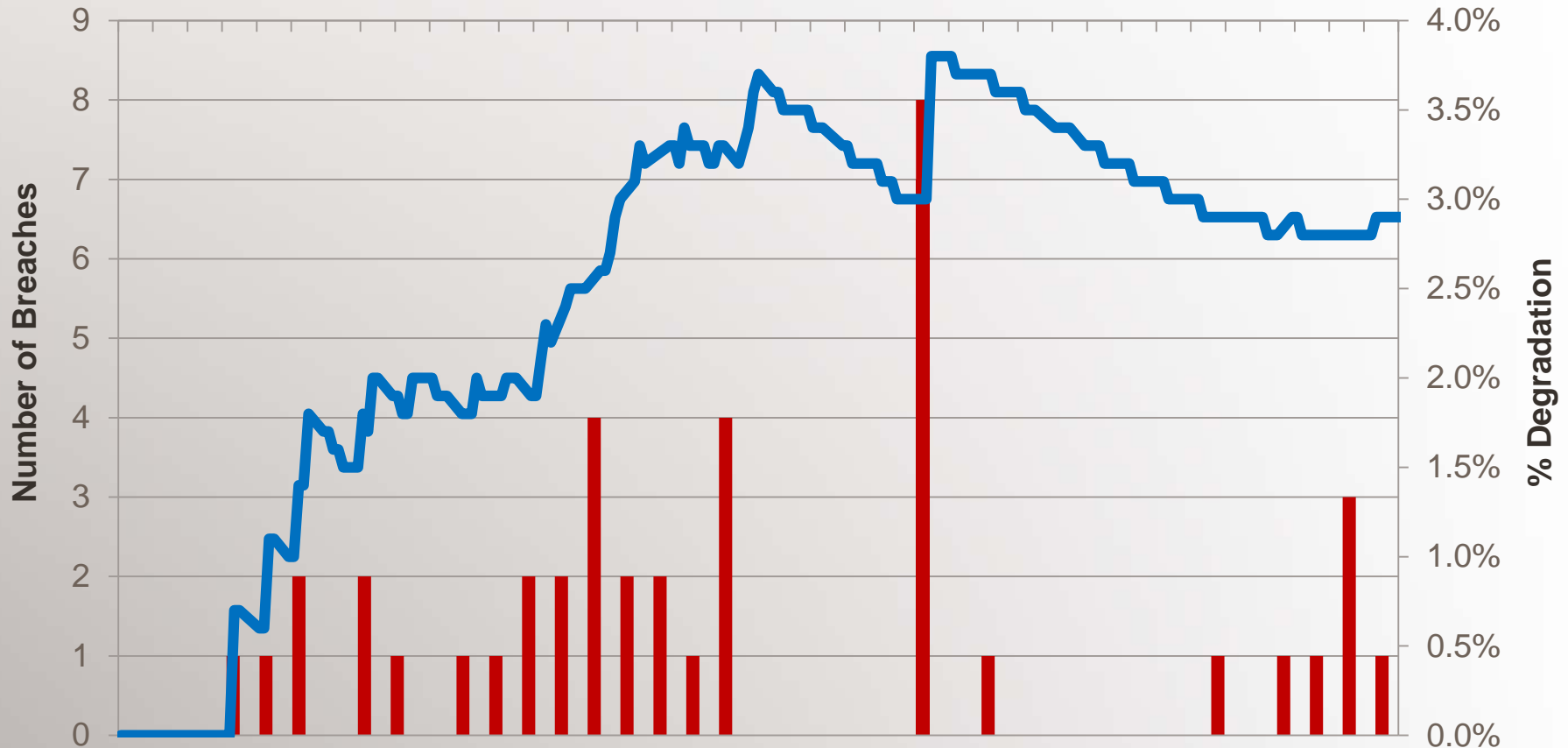
- Maintain minimum speeds
- SAFETEA-LU & MAP-21

MAINTAIN MOBILITY

MAINTAINING MOBILITY

CONTRACTUAL REQUIREMENT – MAINTAINING SPEEDS

Weekly 495 Northbound PM Speed Report (August 2015 to April 2016)



IMPORTANCE OF MAINTAINING MOBILITY ON MANAGED LANES

3. COMMERCIAL DRIVERS



500+ bus trips daily



20,000 HOV trips



2. Contractual Requirements

- Maintain minimum speeds
- SAFETEA-LU & MAP-21



3. Commercial Drivers

- Value for customers
- Revenue flow

1. Network & Policy

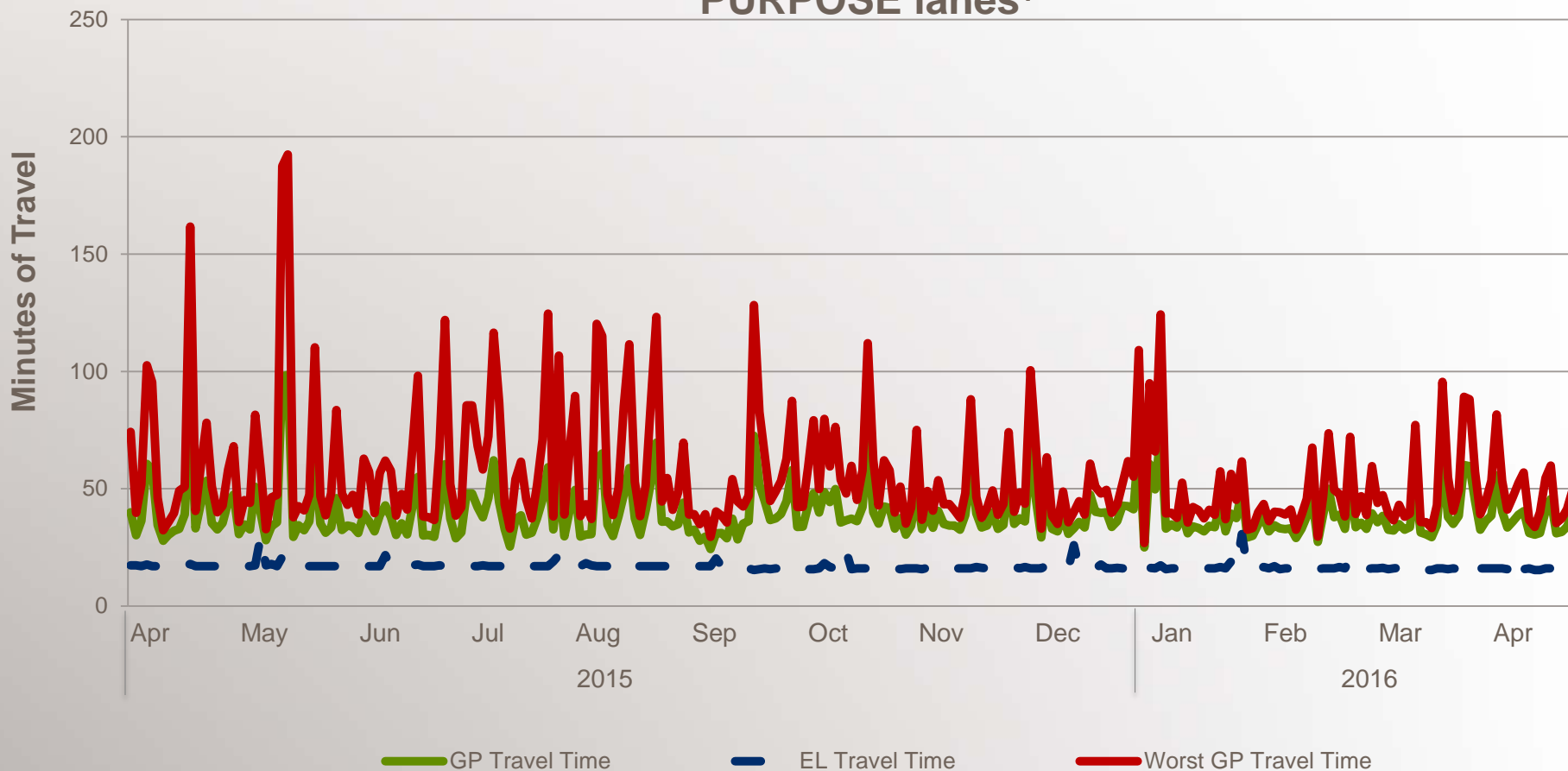
- Improved GP speeds
- Bus & HOV trips

MAINTAIN MOBILITY

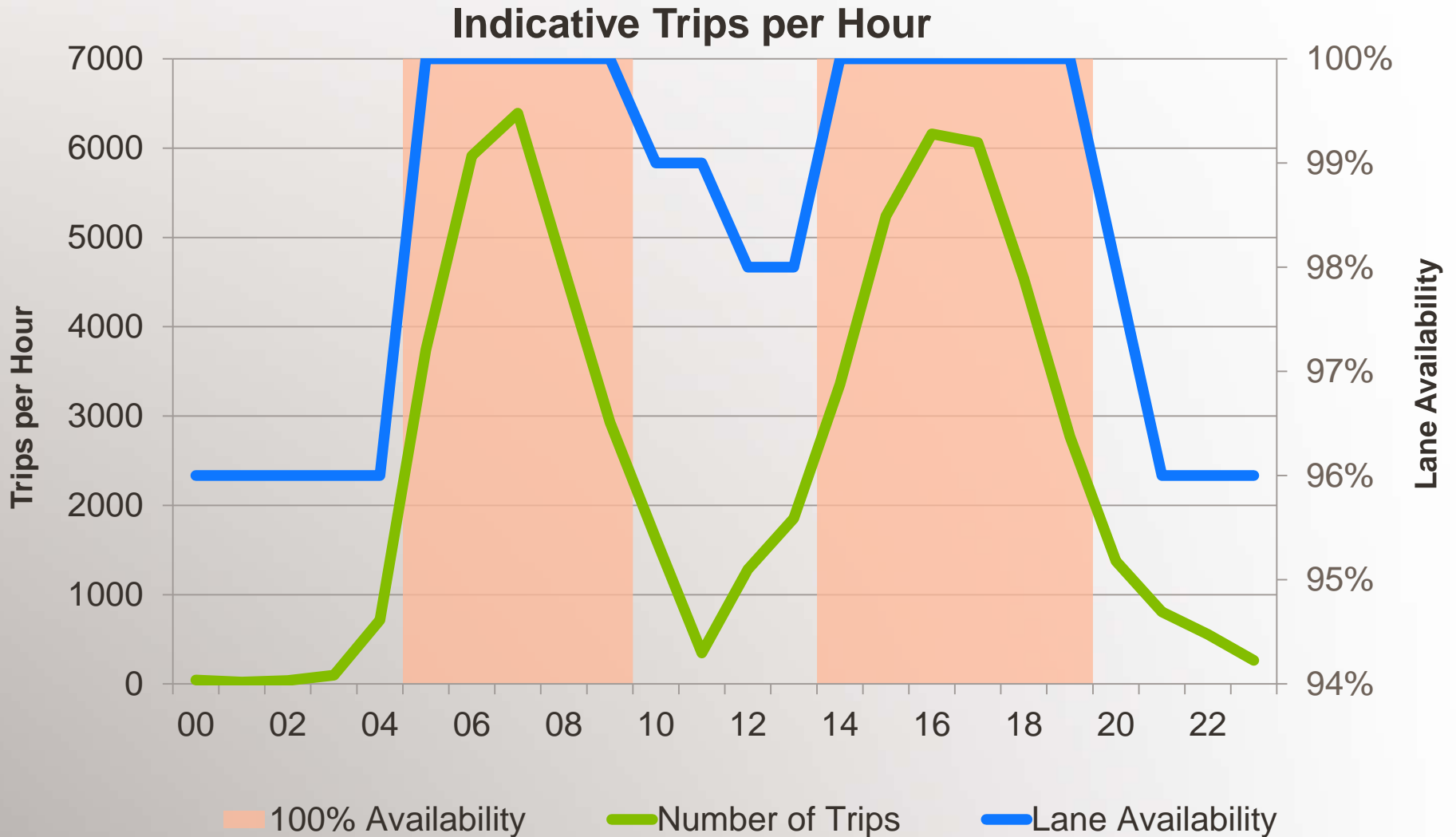
MAINTAINING MOBILITY

COMMERCIAL DRIVERS – DELIVERING VALUE TO CUSTOMERS

Full length PEAK 95 Southbound express and GENERAL PURPOSE lanes¹



MAINTENANCE SCHEDULING AVOIDING THE PEAKS



495 EXPRESS LANES CHALLENGES

- Channelizing post separation between Express & General Purpose Lanes
- 60-70% of accidents originate on the GP lanes
- Channelizing bollards help “steer” traffic away but side-hit potential still present
- Traffic control requires consideration of the risk of potential GP crossover events



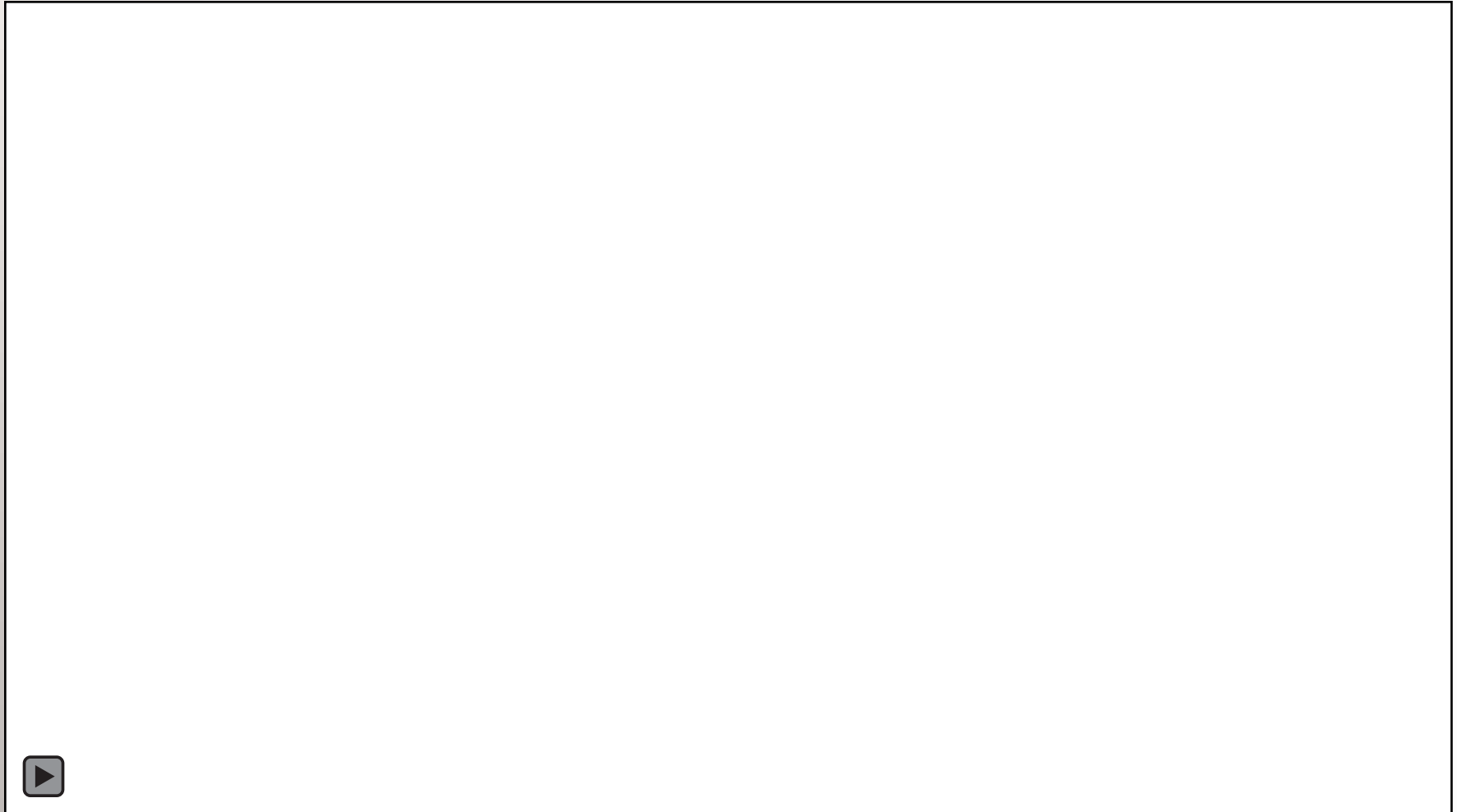
495 EXPRESS LANES

USE OF MOBILE BARRIER



495 EXPRESS LANES

USE OF MOBILE BARRIER



95 EXPRESS LANES CHALLENGES

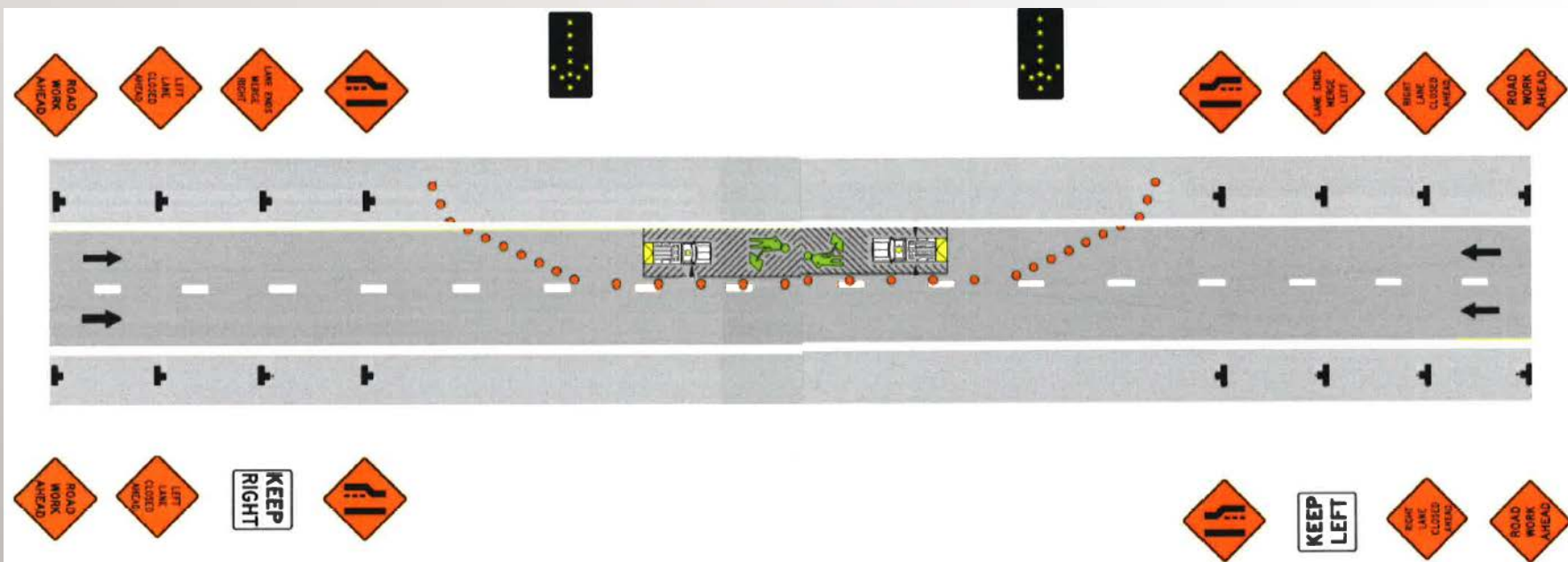
- Jersey barrier or guardrail separated
- Enhanced ITS coverage to support maintenance works
- Reversible facility
- Maintaining work zones during reversal



95 EXPRESS LANES

MANAGING WORK ZONES DURING REVERSAL

- Minimizing disruption to work zone during reversal
- Maximizing safety for maintenance crews
- Ensuring safety for customers



SNOW & ICE CHALLENGES

Pre-Pilot

Overnight snow event forecast

VDOT mobilize level 3, 4, 5

E-ZPass EXPRESS ONLY

INTERSTATE 95 SOUTH

I-495	\$0.50
644W	\$1.00
Backlick	\$1.50

Commence pre-treatment

Minimal traffic volumes

Limited treatment effectiveness

Pilot

Overnight snow event forecast

VDOT mobilize level 3, 4, 5

E-ZPass EXPRESS ONLY

INTERSTATE 95 SOUTH

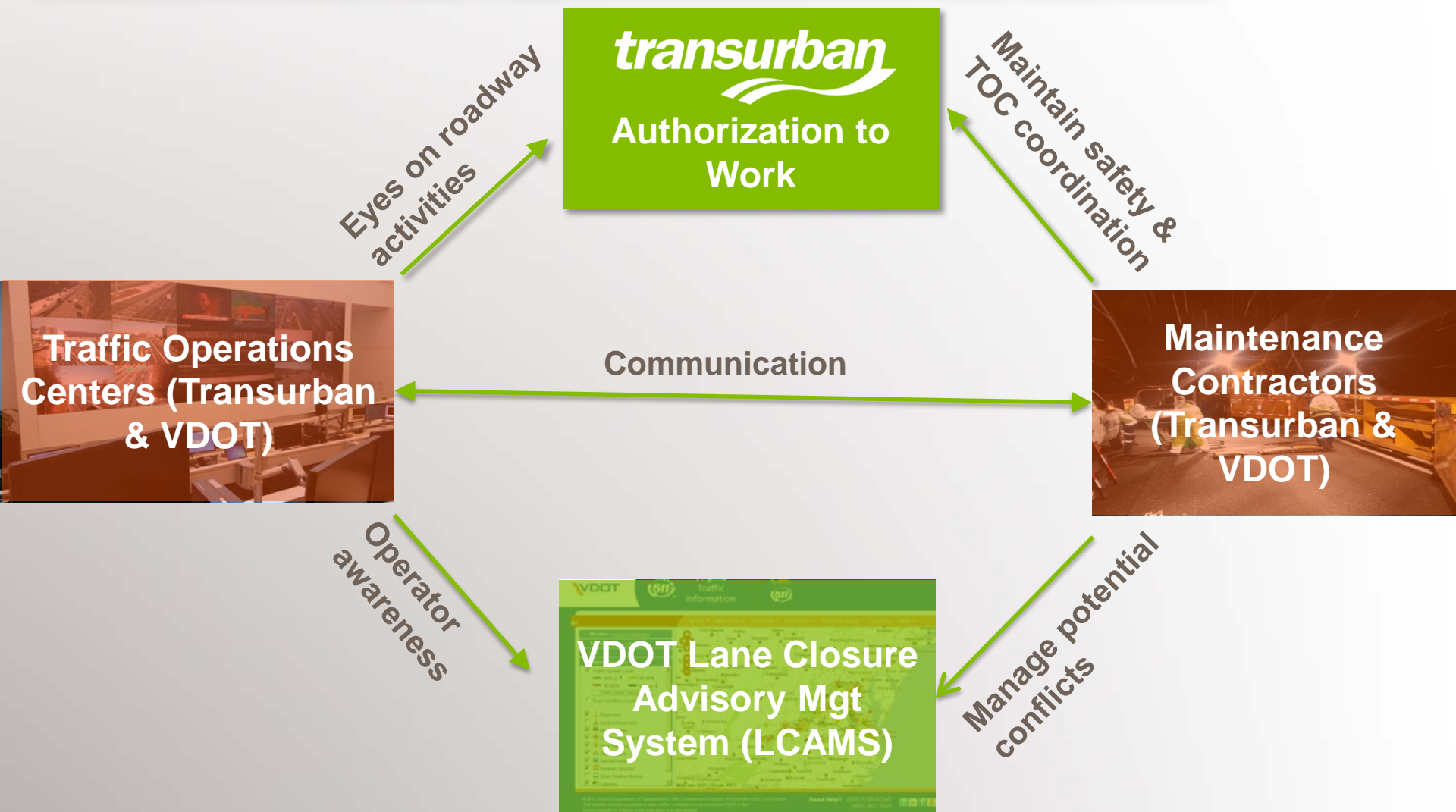
All Tolls \$0.00

Commence pre-treatment

Improved traffic volumes

Safer road conditions

COMMUNICATION CHALLENGES



COMMUNICATIONS & PUBLIC INFORMATION

Public Info Program Goals

- Ensure safety of crews and drivers
- Reduce risk of project delays
- Educate customers, future customers, community members and stakeholders
- Position for successful Go Live – whether project opening or rollout of enhancement to facility

KEY TAKEAWAY

The community can be an ally in overcoming challenges and accelerating project delivery.



Public outreach function plays a powerful role in keeping travelers safe during construction and driving key organizational targets.

OUTREACH IMPLEMENTATION



Ground game >

> Safety campaigns



> Paid media



Social media >



> Earned media



Advancing 395 Express Lanes

Challenge

Extending the 95 Express Lanes network 8 miles north

Approach

- > Be the first to tell our story
- > Emphasize key benefit messages to both customers and direct-impact residents
- > Engage community early and often – no surprises
- > Employ research-based strategies
- > Combat misinformation via cost effective channels

transurban

