

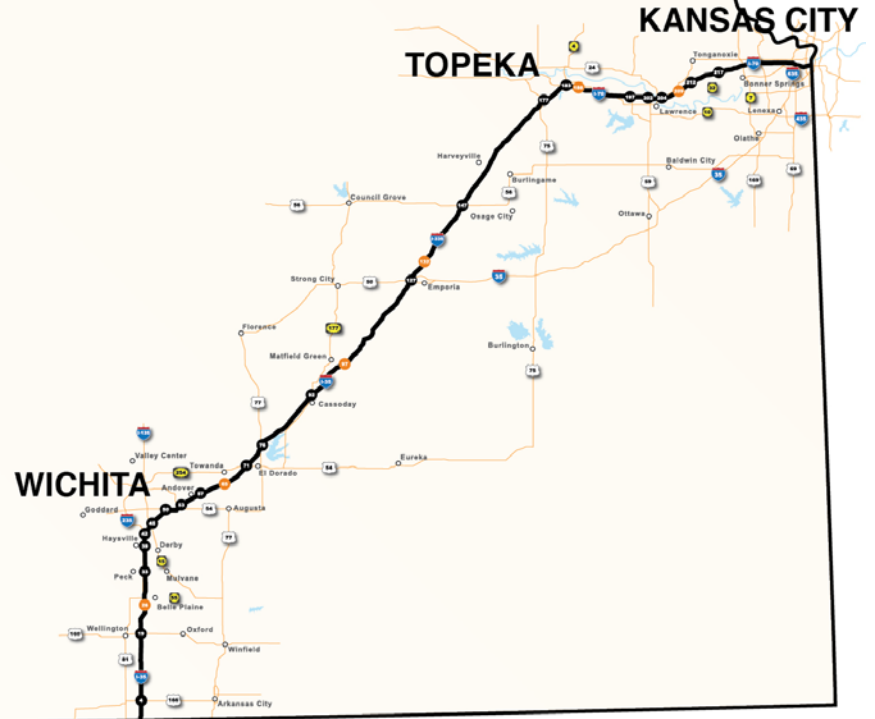


Kansas Turnpike Bridge Polymer Program

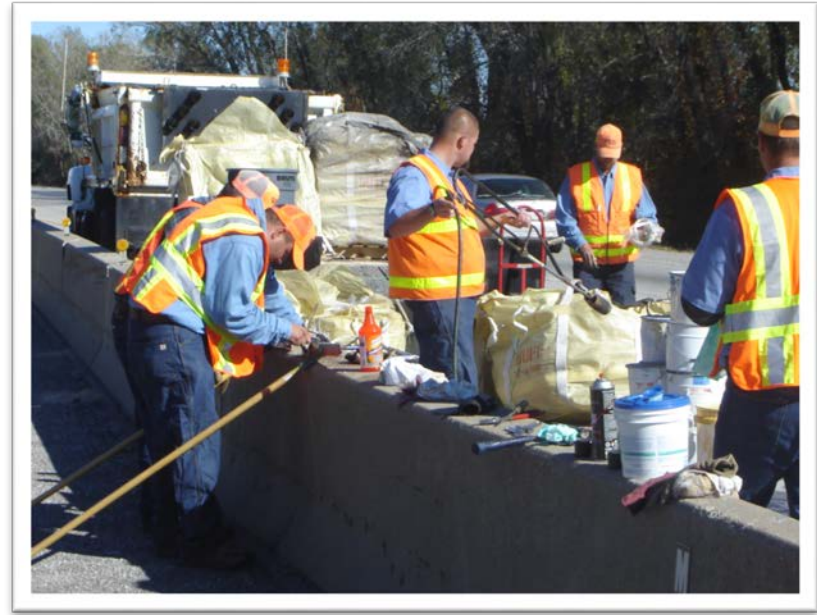
2015 MWBPP Annual Meeting
September 30, 2015



236 Miles Interstate
I-70, I-335, I-35
1000 Lane Miles
22 Toll Plazas
349 Bridges



How we started



Research & Development







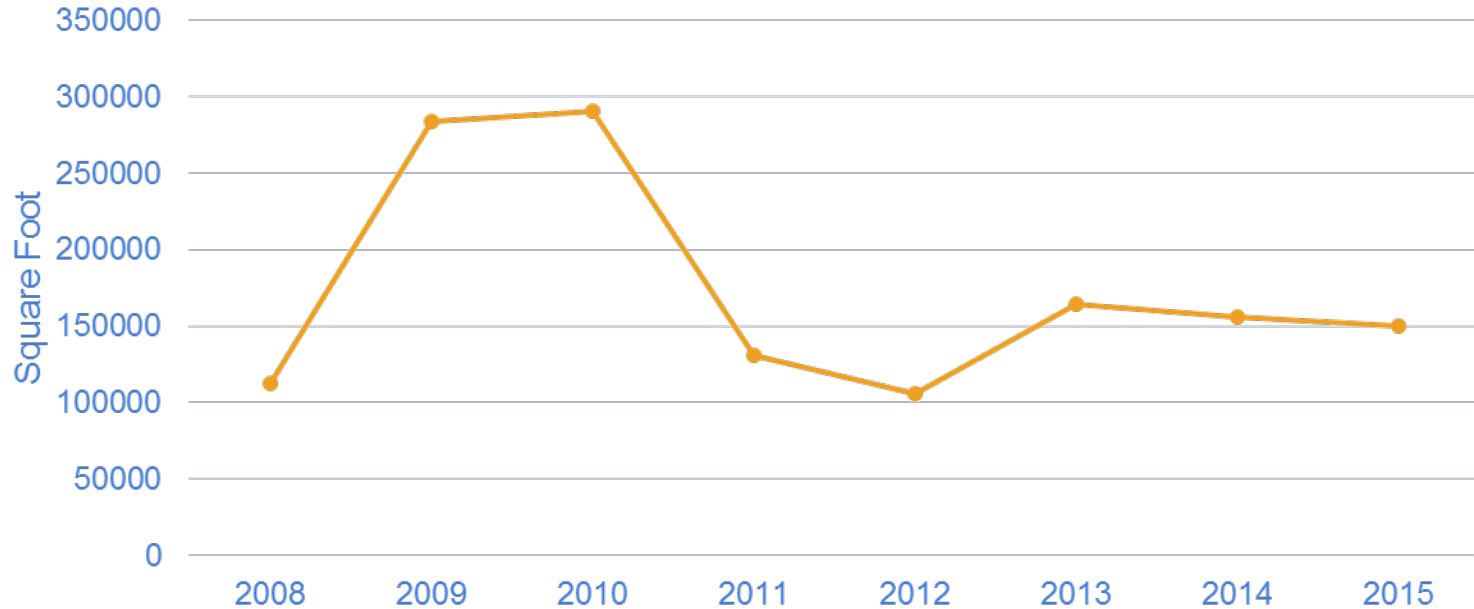
Surface Preparation



Year End Numbers

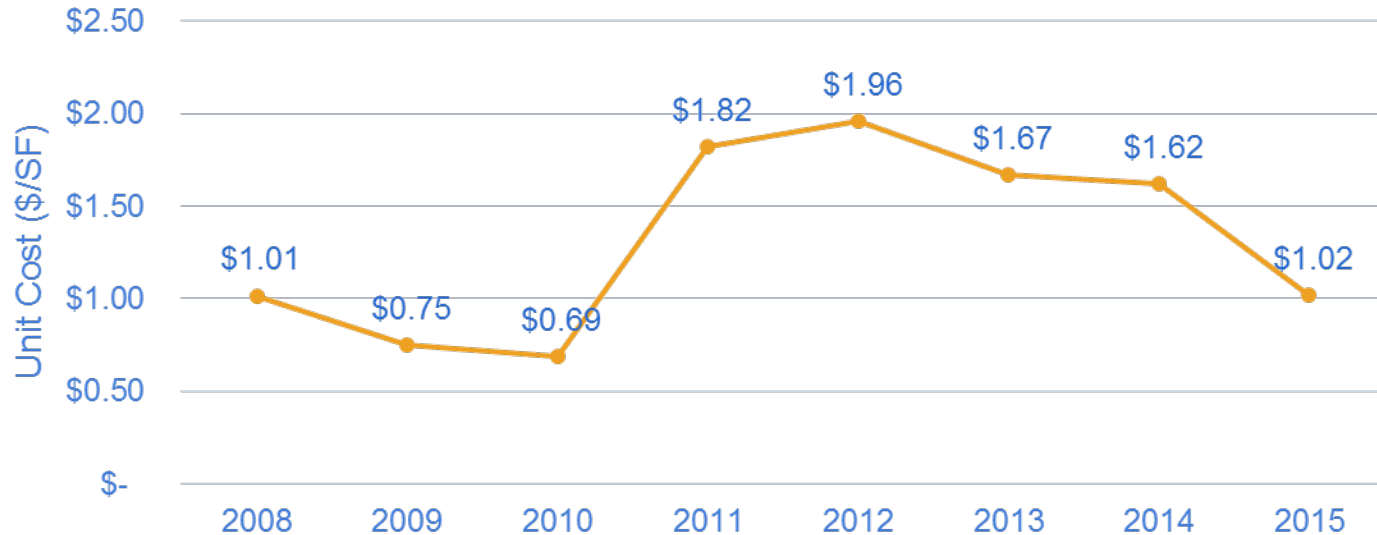
- 2007 – 2 Bridges
- 2008 – 14 Bridges
- 2009 – 31 Bridges
- 2010 – 27 Bridges
- 2011 – 20 Bridges
- 2012 – 12 Bridges
- 2013 – 19 Bridges
- 2014 – 15 Bridges
- 2015 – 22 Bridges
- 2016 – 15+ Bridges

Polymer Overlay Trend



* In 2011, we started double coating some surfaces

Price Trend



* In 2011, we started double coating surfaces

Labor

- In 2008 we used a 10 person crew
- In 2013 we used a 6 person crew
- In 2015 we are using a 5 person crew
- In 2016 will continue a 5 person crew

Contractor vs KTA Costs

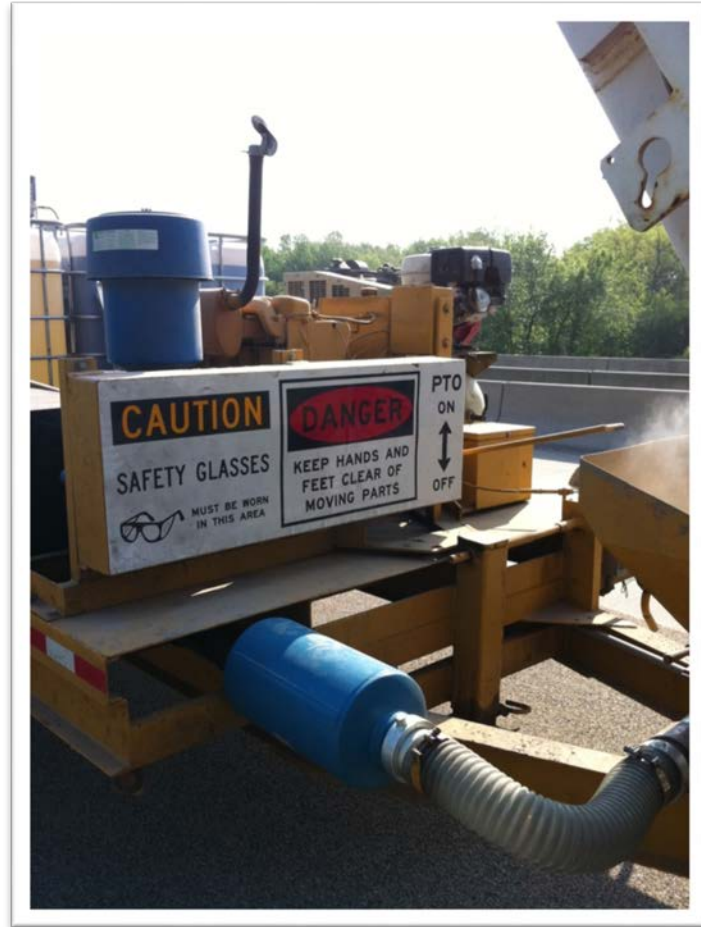
- KRB 15,000ft - \$29.88yd / \$3.32ft
 - With mobilization / traffic control
- IN house - \$22.00yd / \$2.44ft
 - With mobilization / traffic control

















Benefits / Lessons Learned

- Flexibility vs contract
- Set our own schedule
- We are the owners
- Traction coat / winter application
- Older decks to prolong life
- HazMat / Air quality

Other uses










KSturnpike.com

 9401 E Kellogg | Wichita, KS 67207

 (316) 682-4537