



IBTTA
TOLLING. MOVING SMARTER.



Sustainability & Resilience Task Force Meeting

August 1, 2022

Today's Agenda

1. Welcome
2. Upcoming Events
3. U.S. Federal Program Updates
4. Noteworthy U.S. State News
5. International Updates
6. Coordination with the IBTTA International Committee
7. Preview of Austin Session Track: Environment and Climate



Upcoming Events



FUNDRAISER



VIRTUAL POKER NIGHT



August 4, 2022
7pm ET

A night-time photograph of the U.S. Capitol building in Washington, D.C., illuminated by warm lights. The building's iconic dome is the central focus, with its reflection clearly visible in the calm water of the reflecting pool in the foreground. The sky is a deep, dark blue, and the surrounding trees and grounds are also lit up, creating a serene and majestic atmosphere.

U.S. Federal Programs Updates

PROTECT Formula Program Announcement

Program Fact Sheet:

https://www.fhwa.dot.gov/environment/sustainability/resilience/policy_and_guidance/protect_formula.pdf

Program Guidance:

https://www.fhwa.dot.gov/bipartisan-infrastructure-law/protect_fact_sheet.cfm

- New program in IIJA with \$7.3 B apportioned to States by formula.
- Project eligibility includes highway, transit, and certain port/intermodal facilities.
- Eligible costs include planning, resilience improvements, community resilience/evacuation routes, and at-risk coastal infrastructure.
 - not more than 40% for construction of new capacity
 - not more than 10% for development phase activities
- Higher Federal share if the State develops a resilience improvement plan and incorporates it into its long-range transportation plan.
- Liberal transferability among formula fund programs:
 - Transfers \leq 50% of PROTECT Formula funds allowed to any other State apportionment (National Highway Performance Program, Surface Transportation Block Grant Program, Highway Safety Improvement Program, Congestion Mitigation and Air Quality Improvement Program, National Highway Freight Program, Carbon Reduction Program).

Supreme Court vs. USDOT on Climate Agenda

Supreme Court Decision

- Ruling that EPA does not have broad authority to curb pollution from power plants.
 - SCOTUS ruled 15 years ago that EPA has regulatory authority over CO₂ and other types of pollution.
 - Now SCOTUS ruled EPA power to limit carbon pollution is relatively limited.
- Potential impact to other regulations seeking to use older statutes to address social problems (e.g., health care, telecommunications, finance)

FHWA Proposed Rule

<https://www.govinfo.gov/content/pkg/FR-2022-07-15/pdf/2022-14679.pdf>

- FHWA proposed rule would require states/MPOs to track on-road CO₂ emissions on the NHS and set reduction goals for net zero emissions by 2050.
- States/MPOs may have flexibility in target setting that work with their respective climate policies.
- Progress reports would be required.
- First decade compliance estimated to cost \$12.9 B.
- Much is not under the control of state DOTs (e.g., land use), fueling questions of USDOT authority.
- Comments on or before October 13, 2022.

Republican leaders and transportation industry groups criticized the proposal (Sen. Capito, ARTBA, WSJ editorial).

National Electric Vehicle Infrastructure (NEVI) Program

Proposed Minimum Standards

<https://driveelectric.gov>

<https://www.govinfo.gov/content/pkg/FR-2022-06-22/pdf/2022-12704.pdf>

- NPRM issued on June 22, with comments accepted through August 22, 2022.
- Proposed minimum standards include
 - CCS connector required
 - Plug and charge (ISO 15118) protocol
 - Data reporting requirements
 - > 97% uptime

Frequently Asked Questions

https://www.fhwa.dot.gov/environment/alternative_fuel_corridors/resources/nevi_program_faqs.pdf

- Eligible program costs
- Guidance for including disadvantaged communities in planning and development
- Exception requests for station locations

National Electric Vehicle Infrastructure (NEVI) Formula Program Q&A


NEVI Form
Except for the effect of law and information required

DEPARTMENT OF TRANSPORTATION [4910-22-P]
Federal Highway Administration
23 CFR Part 680
[Docket No. FHWA-2022-0008]
RIN 2125-AG10
National Electric Vehicle Infrastructure Formula Program
AGENCY: Federal Highway Administration (FHWA), U.S. Department of Transportation (DOT).
ACTION: Notice of proposed rulemaking (NPRM), request for comments.
SUMMARY: The FHWA proposes to establish regulations setting minimum standards and requirements for projects funded under the National Electric Vehicle Infrastructure (NEVI) Formula Program and projects for the construction of publicly accessible electric vehicle (EV) chargers funded under title 23, United States Code. The standards and requirements proposed would apply to the installation, operation, or maintenance of EV charging infrastructure; the interoperability of EV charging infrastructure; traffic control device or on-premises signage required, installed, or operated in concert with EV charging infrastructure; data, including the format and schedule for the submission of such data; network connectivity of EV charging infrastructure; and information on publicly available EV charging infrastructure locations, pricing, real-time availability, and accessibility through mapping applications.
DATES: Comments must be received on or before [INSERT DATE 60 DAYS AFTER DATE OF PUBLICATION IN THE FEDERAL REGISTER].

Question: V
Answer: Each State DOT (2023) to the Job to reflect the SF fiscal year 2024

Question: V
Answer: The NEVI Form expenses upon

For further information
<https://www.fhwa.dot.gov>



National Highway Institute (NHI) Resilience Training Courses

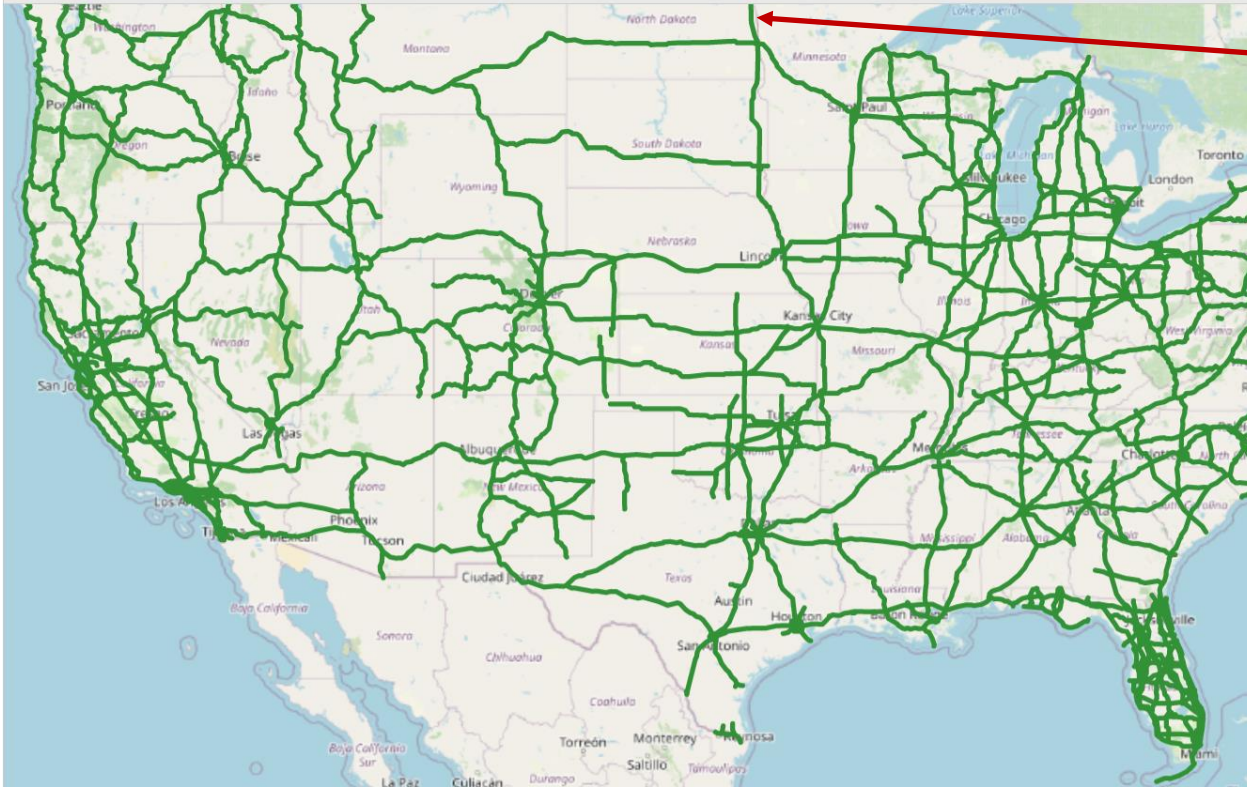
- Four one-hour web-based courses focused on resilience to climate change and extreme weather events.
- Introductory understanding and awareness.
- Target audiences include: engineering, project planning, and environmental staff
- Training also relevant for: regional planners, asset managers, and others seeking to integrate climate change considerations into their practices.

1. [FHWA-NHI-142081 Understanding Past, Current and Future Climate Conditions](#)
2. [FHWA-NHI-142082 Introduction to Temperature and Precipitation Projections](#)
3. [FHWA-NHI-142083 Systems Level Vulnerability Assessments](#)
4. [FHWA-NHI-142084 Adaptation Analysis for Project Decision Making](#)

Updated Federal Resources in *TollMiner*

TollMiner Updated Alternative Fuel Corridor Layer

ALTERNATIVE FUEL CORRIDORS (ROUNDS 1-6) - HOVER OVER CORRIDORS AND FACILITIES FOR MORE INFORMATION



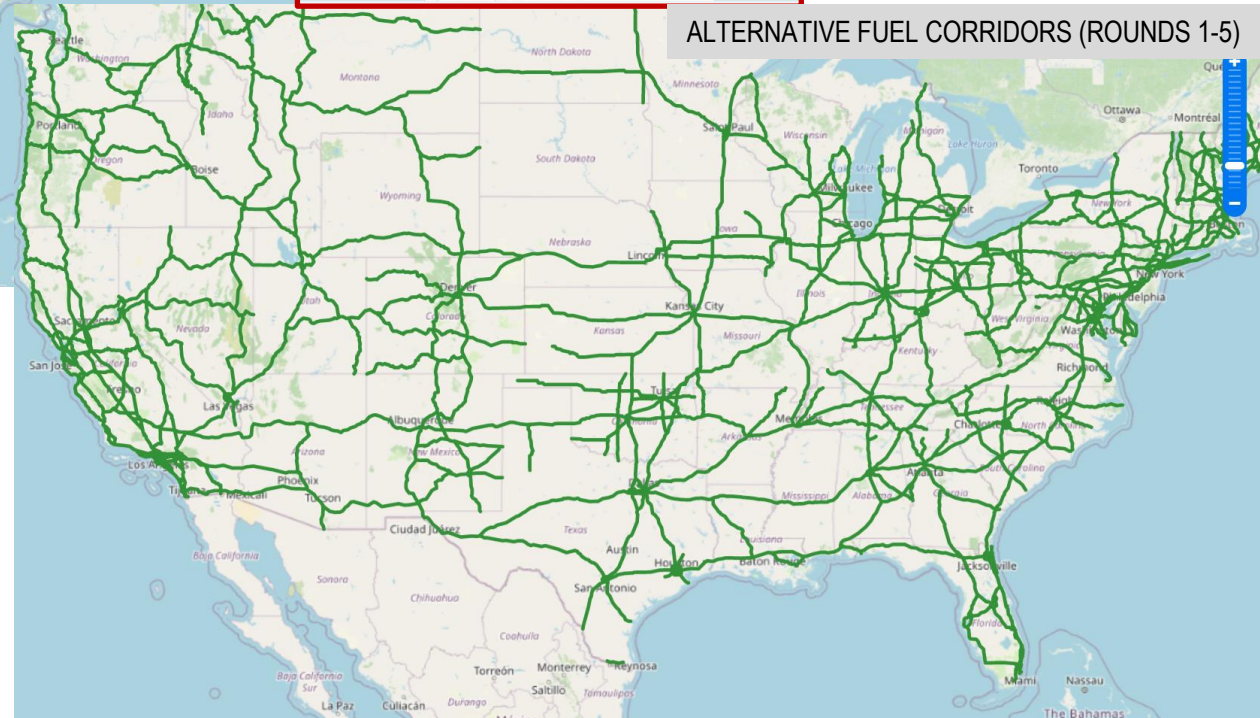
Center HOVER OVER CORRIDORS AND FACILITIES FOR MORE INFORMATION

ALTERNATIVE FUELS CORRIDOR

ALT FUEL ROUTE: I29
LENGTH: 216.27
AFC_NUMBER: I29
ROADTYPE: I
FUEL TYPE SUPPORT (SIGNAGE)

	NO	
	YES (Signage Pending)	ROUND 2
	NO	
	NO	
	NO	

ALTERNATIVE FUEL CORRIDORS (ROUNDS 1-5)



On July 5, FHWA announced Round 6 of the Alternative Fuel Corridor designations required for NEVI program funding eligibility.

TollMiner – North Carolina Examples

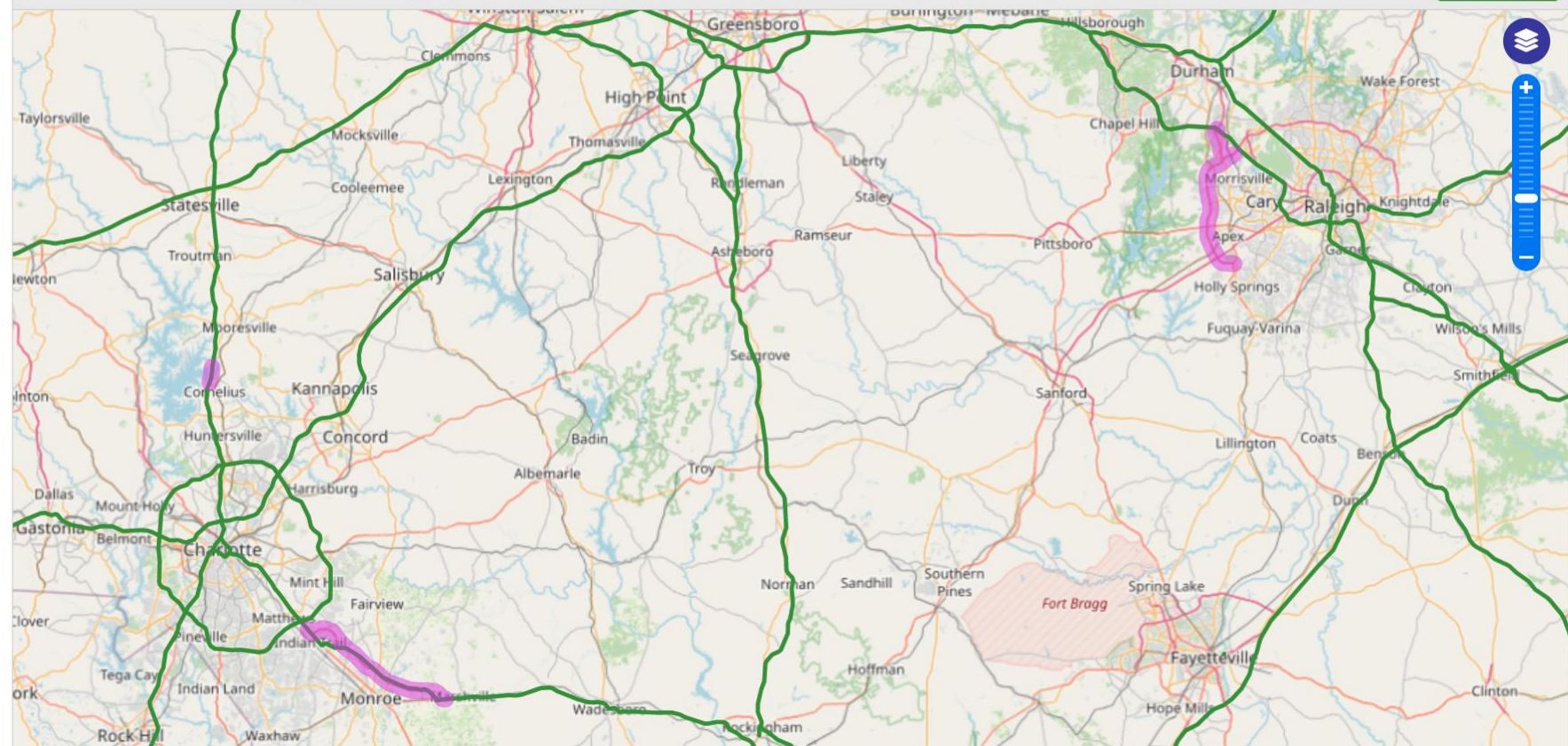
ibtta.org/content/ibtta-tollminer-tool/government-affairs/alternative-fuel

Search, Share, Star, Settings, Print, Mobile icons

TOLLING FACILITIES (SELECT TO DISPLAY ON MAP)

<input type="checkbox"/>	Bayonne Bridge		New York	1.09
<input type="checkbox"/>	Goethals Bridge		New York	1.38
<input type="checkbox"/>	Lincoln Tunnel		New York	1.55
<input type="checkbox"/>	Outerbridge Crossing Bridge		New York	1.70
<input type="checkbox"/>	Thousand Islands Bridge		New York	4.25
<input checked="" type="checkbox"/>	I-77 Express		North Carolina	26.00
<input checked="" type="checkbox"/>	Triangle Expressway		North Carolina	18.80
<input checked="" type="checkbox"/>	Monroe Expressway		North Carolina	18.00
<input type="checkbox"/>	Ohio Turnpike		Ohio	241.00
<input type="checkbox"/>	Cherokee Turnpike		Oklahoma	32.80
<input type="checkbox"/>	Chickasaw Turnpike		Oklahoma	13.30
<input type="checkbox"/>	Cimarron Turnpike		Oklahoma	68.00
<input type="checkbox"/>	Creek Turnpike		Oklahoma	34.40
<input type="checkbox"/>	H.E. Bailey Turnpike		Oklahoma	94.60

ALTERNATIVE FUEL CORRIDORS (ROUNDS 1-6) - HOVER OVER CORRIDORS AND FACILITIES FOR MORE INFORMATION





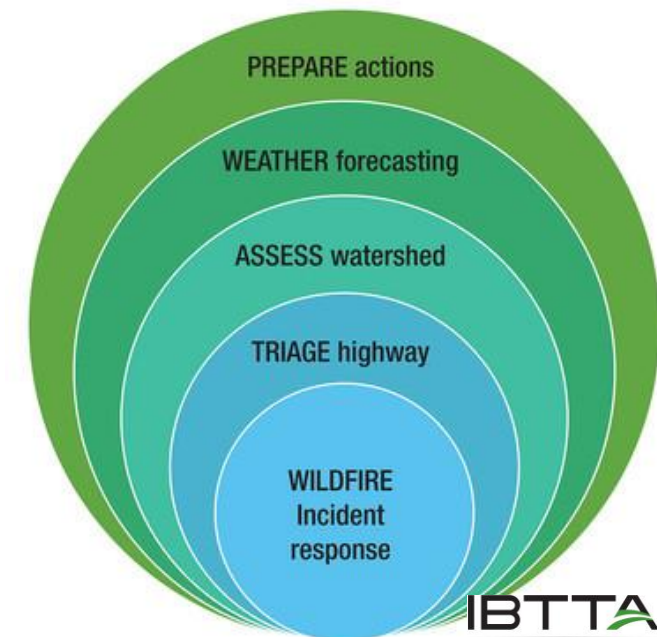
Noteworthy News from the U.S. States

State-Level Best Practices: Caltrans Wildfire Transportation Response

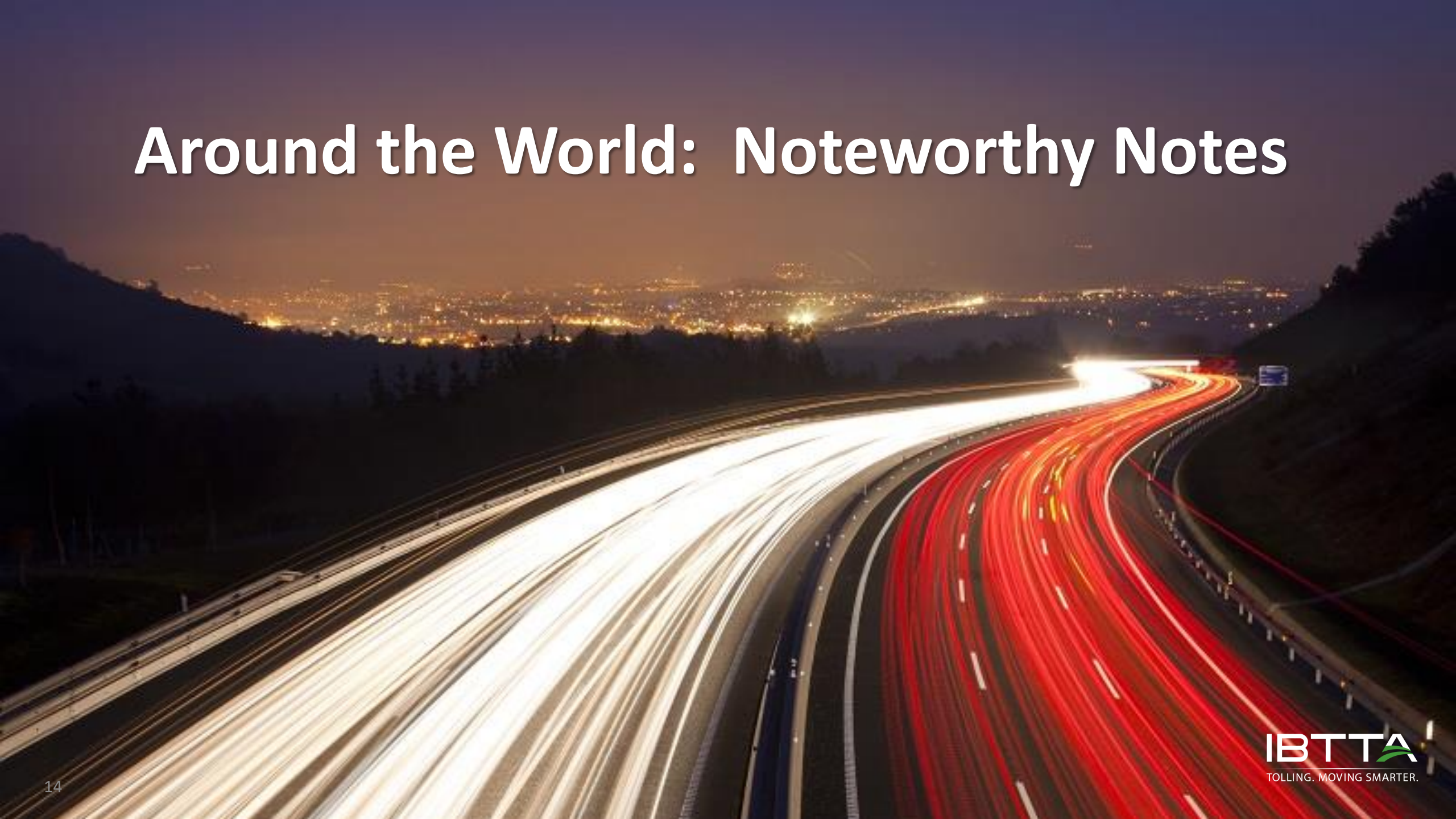
- Eight of the ten largest wildfires in California have occurred in the last five years.
- Interagency collaboration has become essential to coordinate preparation and response activities.
- Caltrans PREPARE methodology preemptively determines when to close State highways in burn scar areas.
- PREPARE is a risk-based framework of pre-authorized actions by local/state/federal partners when rainfall prediction may trigger post-fire debris flow, flooding, rockfall, bridge scour, and dangerous road conditions.
- PREPARE shortened time between adverse weather predictions and road weather management decisions.

Methodology:

1. Incident Response: Coordination with lead agency for emergency ingress/egress for responders and general traffic flow
2. Triage Highway: Deploy expert team to identify impacts outside ROW and determine funding qualification.
3. Assess Watershed: Evaluate risks/impacts beyond the highway, including watershed damage assessment.
4. Weather Forecasting: Work with NWS to get precipitation forecasts with smaller time intervals and geographies to preemptively begin detours, closures, and other proactive measures to protect motorists.
5. PREPARE Actions: During and after an event, including road closures, patrols, EOC activation, and real-time massaging. Support long-term recovery as vegetation regrows with geospatial mapping and other tolls to manage future risks.



Around the World: Noteworthy Notes



Inflation Relief Delays Austrian Carbon Tax Start

- The Austrian government announced relief measures inflationary price increases, including a delay of carbon pricing from 1 July 2022 to 1 October 2022.
- The new carbon tax will be € 30 per ton of CO₂ and added to consumer bills by companies. The tax is planned to be € 55 per ton by 2025, translating to increases in gas and diesel prices by 13 to 15 cents per liter.
- Twenty-seven other countries have carbon taxes, including the UK, Canada, and Japan, but the U.S. is one of the few industrialized nation holdouts.
- Some of the Austrian taxes will be returned to residents in the form of a “climate bonus” of € 100 - € 200 per year depending on where you live, with more returned to rural residents.





**Coordination
with the
IBTTA
International
Committee**

Joint Activities with the International Committee

Proposed Joint Meeting on October 6, 11am-12:30pm EDT

- Committee and Task Force Members and Invited Guests
- Presentations with discussion

Revival of the IBTTA International Tolling Newsletter

- Proposed semi-annual blog format focused on a specific topic
- Planning initial focus on climate change, sustainability , and the green mobility agenda

SEPTEMBER 17-20, 2022 ★ AUSTIN, TEXAS



IBTTA

AUSTIN ★ 2022

90TH ANNUAL MEETING & EXHIBITION

HOSTED BY



CENTRAL TEXAS REGIONAL
MOBILITY AUTHORITY

NTTA
NORTH TEXAS TOLLWAY AUTHORITY

A Look Ahead to the 2022 Annual Meeting

IBTTA
TOLLING. MOVING SMARTER.

Environment and Climate Sessions

90TH ANNUAL MEETING & EXHIBITION



Sunday, Sept 18, 2:00 – 3:30 PM CDT

BREAKOUT SESSION-Environment & Climate: A Green New World-Sustainable Future of Transportation

ESG considerations and the global toll industry's new wave of green infrastructure, operations, and business practices.

John Davis, TollPlus LLC

John Medina, Moody's Investors Service

Alyssa Staley, ITR Concession Company

Emanuela Stocchi, AISCAT

Tuesday, Sept. 20, 10:30 AM – 12:00 PM CDT

BREAKOUT SESSION-Environment & Climate – Lead, Follow or Get Out of the Way!

Tools, technologies and implementations that enable a more connected mobility experience, while improving the employee, customer, or community environment.

Franco Caruso, Brisa-Autoestradas De Portugal

Bill Halkias, Attikes Diadromes, HELLASTRON

Michelle Maikisch, Central Florida Expressway Authority

René Moser, ASFINAG

Tuesday, Sept. 20, 1:30 PM – 3:00 PM CDT

BREAKOUT SESSION-Environment & Climate – Congestion Mitigation Strategies

Strategies of active traffic management, high-occupancy or transit options, pricing strategies, and lane capacity expansion are explored for their congestion mitigation and GHG reduction benefits.

Simon Dixon, Deloitte Consulting LLP

Tsjerk-Friso Roelfzema, Verra Mobility

David Ungemah, WSP

Discussion

- Next Meeting Date - Reschedule from Labor Day (9/5) to the following week (9/12)?
- Northwest Parkway resiliency risk analysis
- VTA visit to Southern California and exploration of hydrogen-fueled transit vehicles
- Networking and introduction to EV charging infrastructure firms