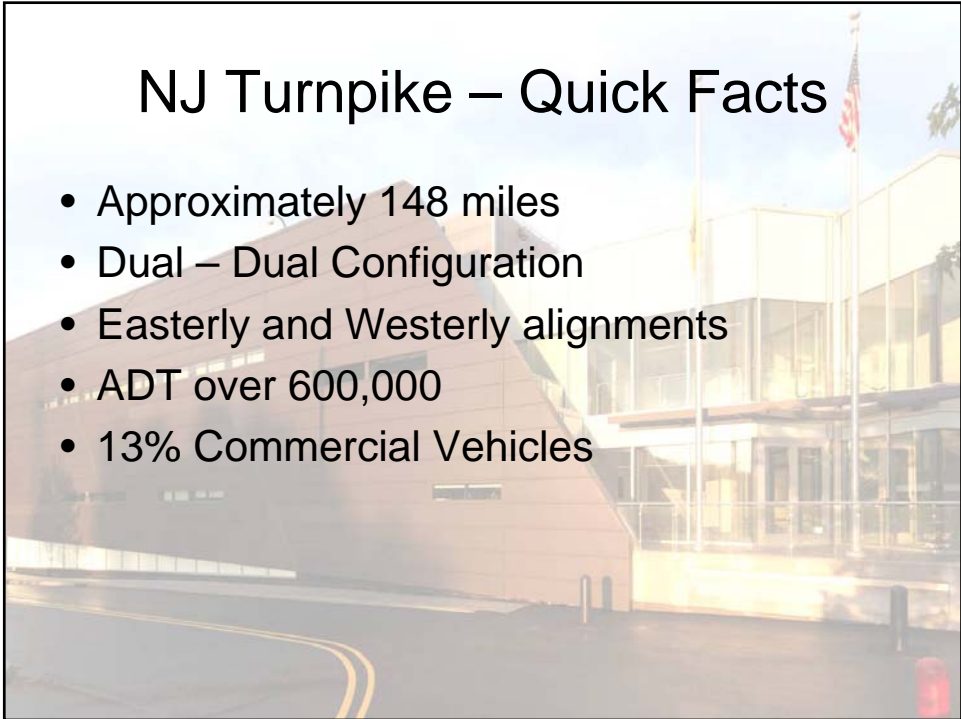




NJ Statewide Traffic Management Center

Sean Hill, P.E.
Director of Operations
New Jersey Turnpike Authority



NJ Turnpike – Quick Facts

- Approximately 148 miles
- Dual – Dual Configuration
- Easterly and Westerly alignments
- ADT over 600,000
- 13% Commercial Vehicles

Garden State Parkway – Quick Facts

- Approximately 173 miles
- Over 1 Million vehicles per day
- Express – Local Configuration
- No trucks north of MP 105

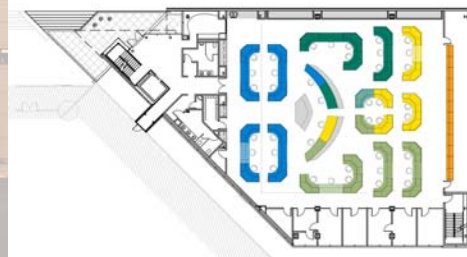
Statewide Traffic Management Center



“Teamwork”



- “PLAYING” NICELY WITH OTHERS
- CONCEPT OF OPERATIONS
- THE BIG PICTURE



Teamwork II




CONCEPT OF OPERATIONS

- **TANGIBLE BENEFITS**
 - Better communication increases safety
 - Better communication lessens delay
 - Better communication saves money

Current ITS Resources

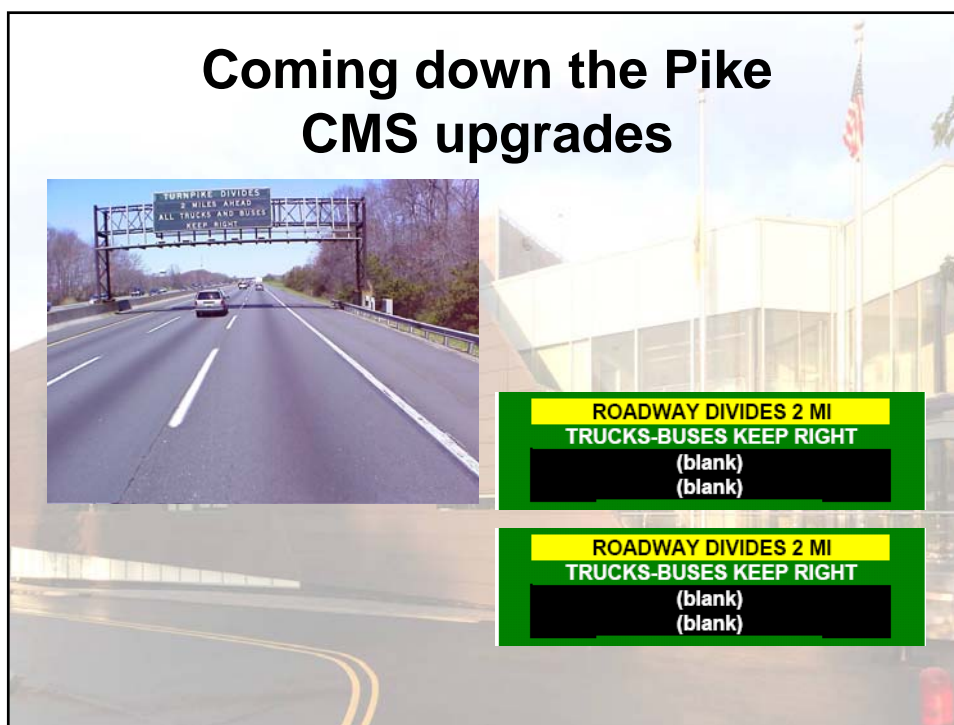
- NJ511
- VMS
- ESW Signs
- CMS
- HAR
- Cameras
- Inrix



Coming down the Pike ESW/SL upgrades

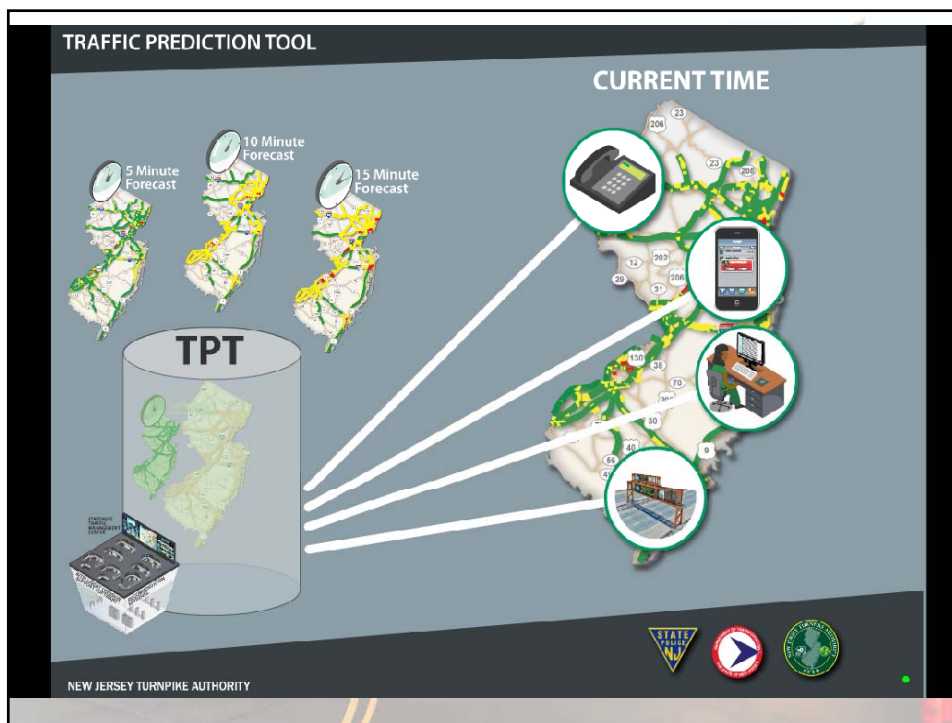
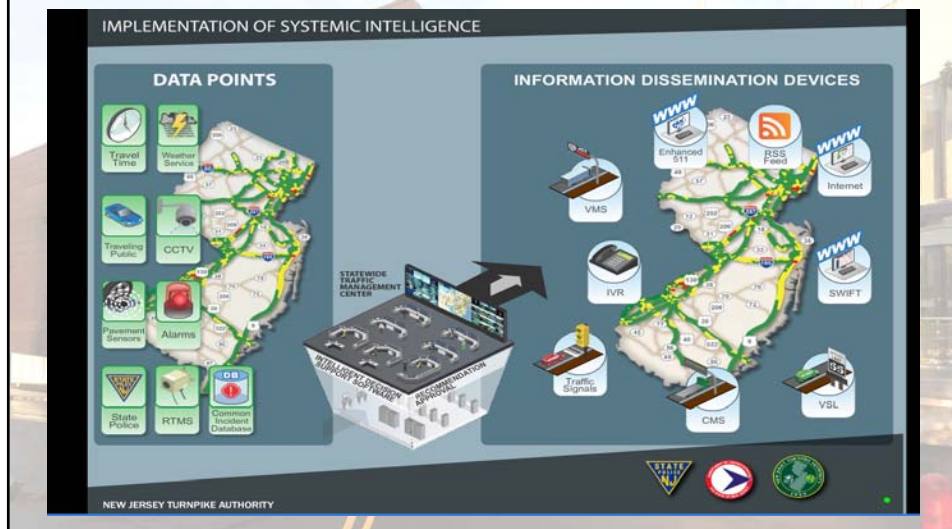


Coming down the Pike CMS upgrades



Coming down the Pike

Core Software + Roadway Assets =
Improved Incident detection and Traffic prediction



Coming down the Pike “Virtual VMS”

