

# GDPR AT egis

IBTTA Webinar October 6th 2020

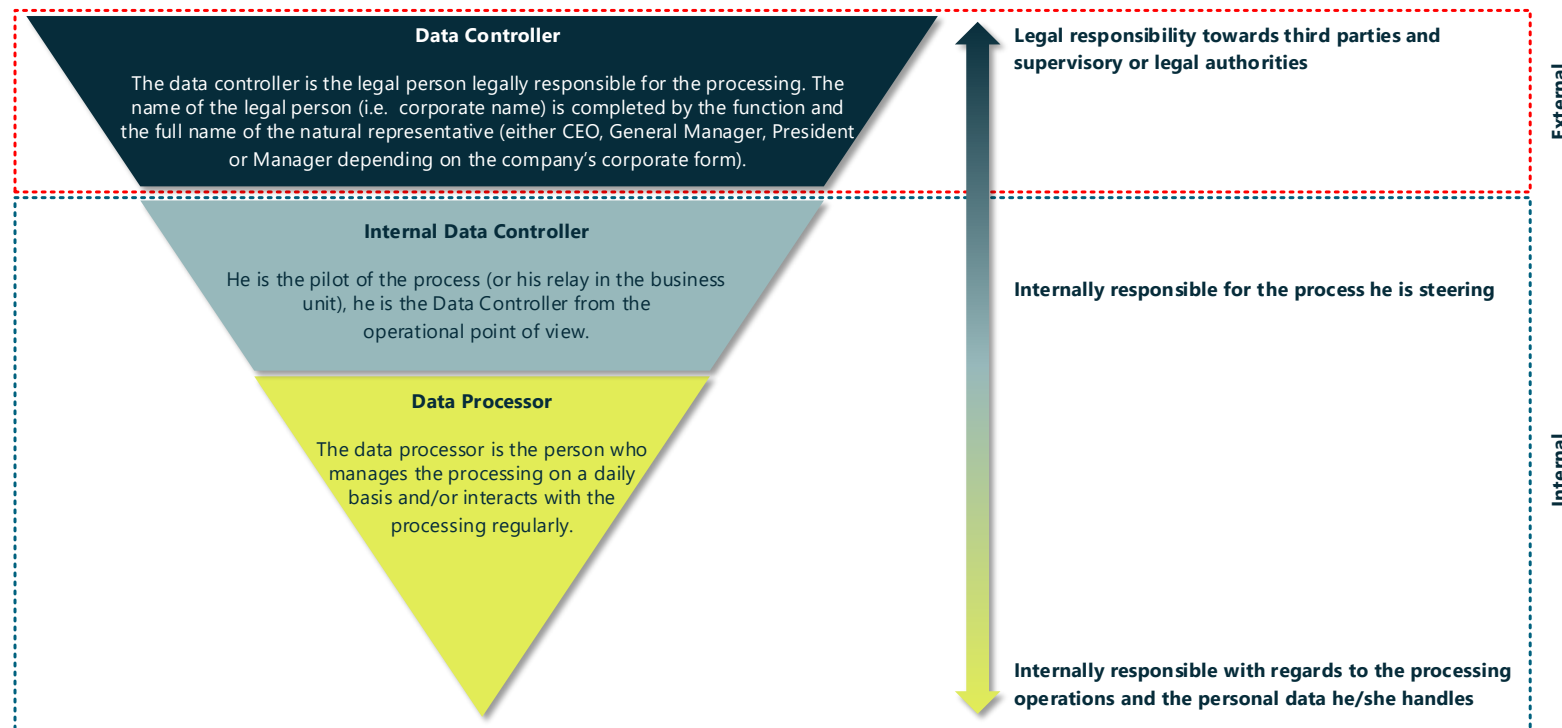
**Pascal LEMONNIER**

Executive Director of Business Development

# 1. DATA CONTROLLER APPOINTMENT

Upon the entry into force of the GDPR, a **data controller** is appointed for every processing.

The data controller is the natural person who determines the purpose and the means of the processing as well as the technical and organisational means of the protection of personal data.



# 2. IDENTIFICATION & PROCESS

The GDPR concerns all Egis group companies.

❑ For an easy identification, Egis has created a mapping of the concerned data.

1. **Non sensitive** personal data

2. **Sensitive** personal data.

❑ The protection of personal data consists above all in making sure that the trade processes do only use adequate and strictly necessary data.

❑ A trade process has a purpose, i.e. the purpose of the process (1) and a processing (2) that will use a file (3) containing personal data.

Exemple : contact data base

Personal data		
<b>Civil status/identity</b> Name First Name Initials Date of birth Place of birth ID photo	<b>Connection data</b> Terminal ID User ID Timestamp information Consumption Browsing history	<b>Professional data</b> Company Job / function level Coefficient Professional CV Training High potential ID / staff number Professional address Professional phone number Professional email address Vehicle registration number
<b>Geotracking data</b> Movements Mobile	<b>Economic data</b> Income of the household Salary Financial situation Fiscal situation Bonus Benefit in kind Expense reports	<b>Personal data</b> Supporting documents Education, diploma Personal CV Family situation Home address Lifestyle Personal email address Phone number Vehicle registration number
	<b>Other</b> Frequent traveler number	

Sensitive data	GDPR Art.9
<b>Data revealing Racial or ethnic origin</b>	<b>Data concerning the life or the sexual orientation</b>
<b>Data revealing Political opinions</b>	<b>Legal data</b> Criminal sentences Infractions Criminal records
<b>Data revealing Religious or Philosophical Convictions</b>	<b>Unique identification number</b> ID card Passport Social security number
<b>Data revealing Trade Union Activity</b>	<b>Biometric data</b> Contour of the hand Fingerprint Iris Facial recognition
<b>Health or Genetic Data</b>	<b>Bank details</b> Bank transfer information IBAN Credit card number
<b>Others</b> Signature GPS	
<b>AUTHORIZED UNDER CONDITIONS / PIA COMPULSORY</b>	

# 3. DATA PROTECTION AND INFORMATION SYSTEMS SECURITY FOR ITS CUSTOMERS

## General principles

- **"Security and Privacy by design"** : Security and protection of personal data integrated since project design stage
- **ISO 27001 Information Systems Security** as a guidance, and achieving ISO certification if needed (Egis Road and Tunnel Operation and GoSafe in Ireland, Connect Plus Services in the UK, Egis Parking Services in Amsterdam...)
  - Business impacts analysis, organization and security management system, drafting of policies and procedures encompassing logical and physical security, etc.
  - Data location and cloud provider selection with high carefulness
  - Vulnerability assessments and penetration testing performed during operation phase on a regular basis, employees training, etc.
- Network of cyber security correspondents supported by the Group's CISO

# GDPR APPLICATION : MOBILITY SERVICES



**01. On Street Parking enforcement**  
Cities of Paris and Amsterdam

**02. Free Flow electronic tolling**

**03. Mobile speed enforcement**  
Go Safe // IRELAND

**04. Low Emission Zone**  
UK, Netherlands

**05. Mobility services in Rotterdam**  
Peek traffic avoidance

Vehicle licence plate is a personal data

# THANK YOU

**Pascal LEMONNIER**

Executive Director of Business (MENS)

[Pascal.lemonnier@egis.fr](mailto:Pascal.lemonnier@egis.fr)